

CD25 Monoclonal Antibody (BC96), eBioscience™

Product Details

Size	100 µg
Species Reactivity	Human
Published Species	Cynomolgus monkey, Baboon, Non-human primate, Mouse, Human
Host/Isotype	Mouse / IgG1, kappa
Class	Monoclonal
Type	Antibody
Clone	BC96
Conjugate	Unconjugated
Form	Liquid
Concentration	0.5 mg/mL
Purification	Affinity chromatography
Storage buffer	PBS, pH 7.2
Contains	0.09% sodium azide
Storage conditions	4° C
RRID	AB_467179

Applications	Tested Dilution	Publications
Immunocytochemistry (ICC/IF)	-	1 Publication
Flow Cytometry (Flow)	1 µg/test	44 Publications

Product Specific Information

Description: The BC96 monoclonal antibody reacts with human CD25, the 55 kDa interleukin-2 receptor alpha chain (IL-2Ralpha). CD25 is expressed by early progenitors of T and B lineage as well as by activated mature T and B lymphocytes. By itself, CD25 binds IL-2 only with low affinity. However, CD25 associates with CD122 (IL-2 receptor beta chain) and CD132 (common gamma chain) to form the high affinity IL-2 receptor. CD25 plays a role in lymphocyte differentiating and activation/proliferation.

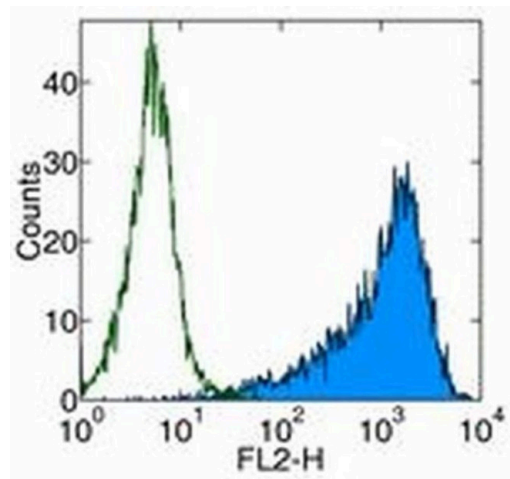
Applications Reported: The BC96 antibody has been reported for use in flow cytometric analysis.

Applications Tested: The BC96 antibody has been tested by flow cytometric analysis of PHA-activated normal human peripheral blood cells. This can be used at less than or equal to 1 µg per test. A test is defined as the amount (µg) of antibody that will stain a cell sample in a final volume of 100 µL. Cell number should be determined empirically but can range from 10⁴ to 10⁸ cells/test. It is recommended that the antibody be carefully titrated for optimal performance in the assay of interest.

Purity: Greater than 90%, as determined by SDS-PAGE.

Aggregation: Less than 10%, as determined by HPLC.

Filtration: 0.2 µm post-manufacturing filtered.



CD25 Antibody (14-0259-82) in Flow
Staining of PHA stimulated human PBMC with Anti-Human CD25 PE. Appropriate isotype controls were used (open histogram). Total viable cells were used for analysis.

[View more figures on thermofisher.cn](#)

[45 References](#)

Immunocytochemistry (1)

<p>Journal of immunology (Baltimore, Md. : 1950)</p> <p>Microbe-specific unconventional T cells induce human neutrophil differentiation into antigen cross-presenting cells.</p> <p>"14-0259 was used in Immunofluorescence to investigate how unconventional T cells represent key controllers of neutrophil-driven innate and adaptive responses to a broad range of pathogens."</p> <p>Authors: Davey MS,Morgan MP,Liuzzi AR,Tyler CJ,Khan MWA,Szakmany T,Hall JE,Moser B,Eberl M</p>	<p>Year 2014</p> <p>Species Human</p>
---	---

Flow Cytometry (44)

<p>Frontiers in pharmacology</p> <p>Disruption of PD-1 Enhanced the Anti-tumor Activity of Chimeric Antigen Receptor T Cells Against Hepatocellular Carcinoma.</p> <p>"Published figure using CD25 monoclonal antibody (Product # 14-0259-82) in Flow Cytometry"</p> <p>Authors: Guo X,Jiang H,Shi B,Zhou M,Zhang H,Shi Z,Du G,Luo H,Wu X,Wang Y,Sun R,Li Z</p>	<p>Year 2023</p>
<p>Frontiers in immunology</p> <p>Advanced immunophenotyping: A powerful tool for immune profiling, drug screening, and a personalized treatment approach.</p> <p>"Published figure using CD25 monoclonal antibody (Product # 14-0259-82) in Flow Cytometry"</p> <p>Authors: Preglej T,Brinkmann M,Steiner G,Aletaha D,Göschl L,Bonelli M</p>	<p>Year 2023</p>

[View more Flow references on thermofisher.cn](#)

More applications with references on thermofisher.cn

For Research Use Only. Not for use in diagnostic procedures. Not for resale without express authorization. Products are warranted to operate or perform substantially in conformance with published Product specifications in effect at the time of sale, as set forth in the Production documentation, specifications and/or accompanying package inserts ("Documentation"). No claim of suitability for use in applications regulated by FDA is made. The warranty provided herein is valid only when used by properly trained individuals. Unless otherwise stated in the Documentation, this warranty is limited to one year from date of shipment when the Product is subjected to normal, proper and intended usage. This warranty does not extend to anyone other than the Buyer. Any model or sample furnished to Buyer is merely illustrative of the general type and quality of goods and does not represent that any Product will conform to such model or sample. NO OTHER WARRANTIES, EXPRESS OR IMPLIED, ARE GRANTED INCLUDING WITHOUT LIMITATION, IMPLIED WARRANTIES OF MERCHANTABILITY, FITNESS FOR ANY PARTICULAR PURPOSE, OR NON INFRINGEMENT. BUYER'S EXCLUSIVE REMEDY FOR NON-CONFORMING PRODUCTS DURING THE WARRANTY PERIOD IS LIMITED TO REPAIR, REPLACEMENT OF OR REFUND FOR THE NON-CONFORMING PRODUCT(S) AT SELLER'S SOLE OPTION. THERE IS NO OBLIGATION TO REPAIR, REPLACE OR REFUND FOR PRODUCTS AS THE RESULT OF (I) ACCIDENT, DISASTER OR EVENT OF FORCE MAJEURE, (II) MISUSE, FAULT OR NEGLIGENCE OF OR BY BUYER, (III) USE OF THE PRODUCTS IN A MANNER FOR WHICH THEY WERE NOT DESIGNED, OR (IV) IMPROPER STORAGE AND HANDLING OF THE PRODUCTS. Unless otherwise expressly stated on the Product or in the documentation accompanying the Product, the Product is intended for research only and is not to be used for any other purpose, including without limitation, unauthorized commercial uses, in vitro diagnostic uses, ex vivo or in vivo therapeutic uses, or any type of consumption by or application to human or animals.