

Cytokeratin Pan Type I Monoclonal Antibody (AE1), eBioscience™

| Product Details | |
|--------------------|---|
| Size | 100 µg |
| Species Reactivity | Dog, Chicken, Human, Mouse, Non-human primate, Rhesus monkey, Rat |
| Published Species | Human, Rhesus monkey |
| Host/Isotype | Mouse / IgG1 |
| Class | Monoclonal |
| Type | Antibody |
| Clone | AE1 |
| Conjugate | Unconjugated |
| Form | Liquid |
| Concentration | 0.5 mg/mL |
| Purification | Affinity chromatography |
| Storage buffer | PBS, pH 7.2 |
| Contains | 0.09% sodium azide |
| Storage conditions | 4° C |
| RRID | AB_1834477 |

| Applications | Tested Dilution | Publications |
|---|-----------------|----------------|
| Western Blot (WB) | 2 µg/mL | - |
| Immunohistochemistry (Paraffin) (IHC (P)) | Assay-Dependent | - |
| Immunohistochemistry (Frozen) (IHC (F)) | Assay-Dependent | - |
| Immunocytochemistry (ICC/IF) | Assay-Dependent | 1 Publication |
| Flow Cytometry (Flow) | - | 2 Publications |

Product Specific Information

Description: The monoclonal antibody AE1 recognizes many members of the acidic (Type I) family of cytokeratins. Cytokeratins are intermediate filament proteins comprising one component of the cytoskeleton. There are two large families of cytokeratins, acidic and basic, but all contain the same basic domains (i.e. an alpha-helical core with an N- and C-terminal domain). The proteins are expressed in epithelial cells, but are developmentally regulated. Many tumors also express these cytokeratins, and their expression can help identify the origin of a neoplasm.

The AE1 monoclonal antibody recognizes 56.5, 54', 50, 50', 48, and 40 kDa proteins (also known as CK10, 14, 15, 16 and 19) in mouse, human, rat, primate (cynomolgus and rhesus), dog, cat, rabbit and chicken.

Applications Reported: This AE1 antibody has been reported for use in western blotting, immunohistochemical staining of frozen tissue sections, immunohistochemical staining of formalin-fixed paraffin embedded tissue sections, immunohistochemical staining, and immunocytochemistry.

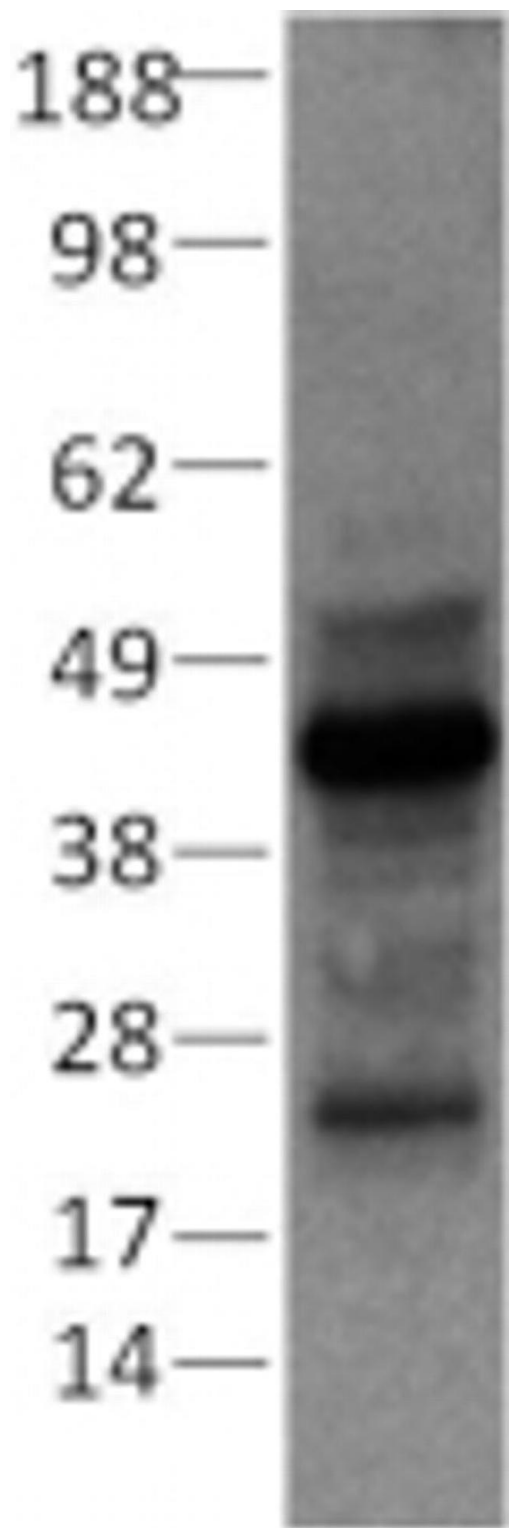
Applications Tested: This AE1 antibody has been tested by western blot on SDS-reduced lysates from MCF7 cells at less than or equal to 2 µg/mL. It is recommended that the antibody be titrated for optimal performance in the assay of interest.

Purity: Greater than 90%, as determined by SDS-PAGE.

Aggregation: Less than 10%, as determined by HPLC.

Filtration: 0.2 µm post-manufacturing filtered.

Product Images For Cytokeratin Pan Type I Monoclonal Antibody (AE1), eBioscience™



Cytokeratin Pan Type I Antibody (14-9001-82) in WB
MCF7 cell lysates prepared under reducing conditions were resolved by SDS-PAGE then immunoblotted with 2 µg/mL of Anti-Acidic Cytokeratin Purified. Bands were visualized using Anti-Mouse IgG HRP.

Immunocytochemistry (1)

| | |
|--|---------------------------------|
| Viruses | Year 2020 |
| Comparison of Multiplexed Immunofluorescence Imaging to Chromogenic Immunohistochemistry of Skin Biomarkers in Response to Monkeypox Virus Infection. | Species Rhesus monkey |
| "14-9001-82 was used in Immunocytochemistry to determine whether multiplexed tissue immunofluorescence is comparable to manual H-scoring of chromogenic stains." | |
| Authors: Sood A,Sui Y,McDonough E,Santamaria-Pang A,Al-Kofahi Y,Pang Z,Jahrling PB,Kuhn JH,Ginty F | |

Flow Cytometry (2)

| | |
|---|-------------------------|
| F1000Research | Year 2020 |
| Flow cytometry dataset for cells collected from touched surfaces. | Species Human |
| "14-9001 was used in Flow cytometry/Cell sorting to create a dataset containing antibody hybridization surveys using Human Leukocyte Antigen and Cytokeratin probes." | |
| Authors: Kwon YJ,Stanciu CE,Philpott MK,Ehrhardt CJ | |

| | |
|--|-------------------------|
| Analytical and bioanalytical chemistry | Year 2017 |
| Analysis of cellular autofluorescence in touch samples by flow cytometry: implications for front end separation of trace mixture evidence. | Species Human |
| "14-9001 was used in Flow cytometry/Cell sorting to indicate that autofluorescence levels in touch samples are influenced by a donor's contact with specific material prior to handling the collection substrate." | |
| Authors: Katherine Philpott M,Stanciu CE,Kwon YJ,Bustamante EE,Greenspoon SA,Ehrhardt CJ | |

For Research Use Only. Not for use in diagnostic procedures. Not for resale without express authorization. Products are warranted to operate or perform substantially in conformance with published Product specifications in effect at the time of sale, as set forth in the Production documentation, specifications and/or accompanying package inserts ("Documentation"). No claim of suitability for use in applications regulated by FDA is made. The warranty provided herein is valid only when used by properly trained individuals. Unless otherwise stated in the Documentation, this warranty is limited to one year from date of shipment when the Product is subjected to normal, proper and intended usage. This warranty does not extend to anyone other than the Buyer. Any model or sample furnished to Buyer is merely illustrative of the general type and quality of goods and does not represent that any Product will conform to such model or sample. NO OTHER WARRANTIES, EXPRESS OR IMPLIED, ARE GRANTED INCLUDING WITHOUT LIMITATION, IMPLIED WARRANTIES OF MERCHANTABILITY, FITNESS FOR ANY PARTICULAR PURPOSE, OR NON INFRINGEMENT. BUYER'S EXCLUSIVE REMEDY FOR NON-CONFORMING PRODUCTS DURING THE WARRANTY PERIOD IS LIMITED TO REPAIR, REPLACEMENT OF OR REFUND FOR THE NON-CONFORMING PRODUCT(S) AT SELLER'S SOLE OPTION. THERE IS NO OBLIGATION TO REPAIR, REPLACE OR REFUND FOR PRODUCTS AS THE RESULT OF (I) ACCIDENT, DISASTER OR EVENT OF FORCE MAJEURE, (II) MISUSE, FAULT OR NEGLIGENCE OF OR BY BUYER, (III) USE OF THE PRODUCTS IN A MANNER FOR WHICH THEY WERE NOT DESIGNED, OR (IV) IMPROPER STORAGE AND HANDLING OF THE PRODUCTS. Unless otherwise expressly stated on the Product or in the documentation accompanying the Product, the Product is intended for research only and is not to be used for any other purpose, including without limitation, unauthorized commercial uses, in vitro diagnostic uses, ex vivo or in vivo therapeutic uses, or any type of consumption by or application to human or animals.