

Cytokeratin 7 Monoclonal Antibody (LP5K), eBioscience™

Product Details	
Size	100 µg
Species Reactivity	Human
Published Species	Human, Mouse
Host/Isotype	Mouse / IgG2b
Class	Monoclonal
Type	Antibody
Clone	LP5K
Conjugate	Unconjugated
Form	Liquid
Concentration	0.5 mg/mL
Purification	Affinity chromatography
Storage buffer	PBS, pH 7.2
Contains	0.09% sodium azide
Storage conditions	4° C
RRID	AB_10669584

Applications	Tested Dilution	Publications
Western Blot (WB)	1:1,000	-
Immunocytochemistry (ICC/IF)	5 µg/mL	1 Publication
Flow Cytometry (Flow)	-	1 Publication

Product Specific Information

Description: This LP5K monoclonal antibody reacts with human cytokeratin 7 (K7), a 54-kDa type II (or basic) keratin expressed either alone or paired with cytokeratin 19 in simple epithelia, mesothelium, urothelium, and pseudostratified epithelium. Expression of cytokeratin 7 in the gastric foveolar, intestinal, and stratified squamous epithelia is extremely low or undetectable. Cytokeratins form the intracellular cytoskeletal network that maintains the integrity and stability of cells and tissues. In addition, most carcinomas express cytokeratin 7. The coordinated expression of this keratin with cytokeratin 20 is commonly used as a diagnostic marker for a variety of carcinomas.

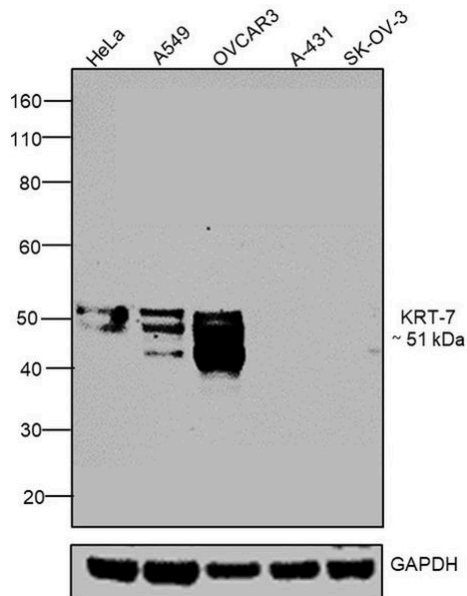
Applications Reported: This LP5K antibody has been reported for use in immunoblotting (WB) and immunocytochemistry (ICC).

Applications Tested: This LP5K antibody has been tested by immunofluorescent staining of paraformaldehyde fixed and permeabilized cells. This can be used at less than or equal to 10 µg/mL. It is recommended that the antibody be titrated for optimal performance in the assay of interest.

Purity: Greater than 90%, as determined by SDS-PAGE.

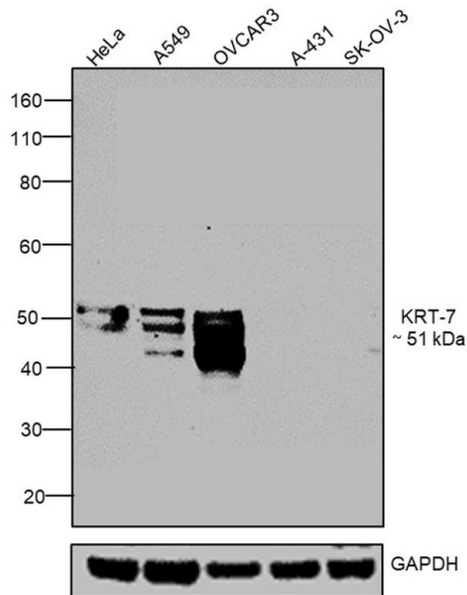
Aggregation: Less than 10%, as determined by HPLC.

Filtration: 0.2 µm post-manufacturing filtered.



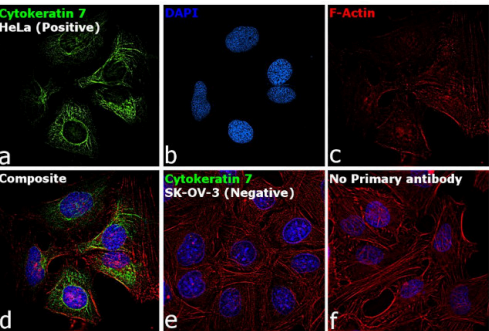
Cytokeratin 7 Antibody (14-9005-82)

Antibody specificity was demonstrated by detection of differential basal expression of the target across tissues owing to their inherent genetic constitution. Higher expression of KRT7 was observed in HeLa, A549, OVCAR-3 cells in comparison to A431 and SK-OV-3 cells using Cytokeratin 7 Monoclonal Antibody (LP5K), eBioscience™ (Product # 14-9005-82) in western blot. {RE}



Cytokeratin 7 Antibody (14-9005-82) in WB

Western blot was performed using Cytokeratin 7 Monoclonal Antibody (LP5K), eBioscience™ (Product # 14-9005-82) and a 51 kDa band corresponding to KRT-7 was observed in positive cell lines such as HeLa, A549, OVCAR-3 and not in negative cell lines such as A431 and SK-OV-3 as mentioned in literature. Membrane enriched extracts (30 µg lysate) of HeLa (Lane 1), A549 (Lane 2), OVCAR-3 (Lane 3), A-431 (Lane 4) and SK-OV-3 (Lane 5) were electrophoresed using NuPAGE® 4-12 % Bis-Tris gel (Product # NP0321BOX). Resolved proteins were then transferred onto a nitrocellulose membrane (Product # IB23001) by iBlot® 2 Dry Blotting System (Product # IB21001). The blot was probed with the primary antibody (1:1000 dilution) and detected by chemiluminescence with Goat anti-Mouse IgG (H+L) Superclonal™ Recombinant Secondary Antibody, HRP (Product # A28177, 1:4000 dilution) using the iBright FL 1000 (Product # A32752). Chemiluminescent detection was performed using Novex® ECL Chemiluminescent Substrate Reagent Kit (Product # WP20005).



Cytokeratin 7 Antibody (14-9005-82)

Antibody specificity was demonstrated by detection of differential basal expression of the target across tissues owing to their inherent genetic constitution. Higher expression of KRT7 was observed in HeLa in comparison to SK-OV-3 cells using Cytokeratin 7 Monoclonal Antibody (LP5K), eBioscience™ (Product # 14-9005-82) in Immunofluorescence. {RE}

View more figures on thermofisher.cn

Immunocytochemistry (1)

Cell reports. Medicine	Year 2021
CCNE1 copy number is a biomarker for response to combination WEE1-ATR inhibition in ovarian and endometrial cancer models.	Species Human
"14-9005-82 was used in Immunocytochemistry to demonstrate that CCNE1 CN is a clinically tractable biomarker predicting responsiveness to low-dose WEE1i-ATRI for aggressive subsets of OVCAs/EMCAs."	
Authors: Xu H,George E,Kinose Y,Kim H,Shah JB,Peake JD,Ferman B,Medvedev S,Murtha T,Barger CJ,Devins KM,D'Andrea K,Wubbenhorst B,Schwartz LE,Hwang WT,Mills GB,Nathanson KL,Karpf AR,Drapkin R,Brown EJ,Simpkins F	

Flow Cytometry (1)

Cell	Year 2019
The Bone Marrow Protects and Optimizes Immunological Memory during Dietary Restriction.	Species Mouse
"14-9005-82 was used in Flow cytometry/Cell sorting to show that memory T cells collapsed in secondary lymphoid organs in the context of dietary restriction (DR) but dramatically accumulated within the bone marrow (BM), where they adopted a state associated with energy conservation."	
Authors: Collins N,Han SJ,Enamorado M,Link VM,Huang B,Moseman EA,Kishton RJ,Shannon JP,Dixit D,Schwab SR,Hickman HD,Restifo NP,McGavern DB,Schwartzberg PL,Belkaid Y	

For Research Use Only. Not for use in diagnostic procedures. Not for resale without express authorization. Products are warranted to operate or perform substantially in conformance with published Product specifications in effect at the time of sale, as set forth in the Production documentation, specifications and/or accompanying package inserts ("Documentation"). No claim of suitability for use in applications regulated by FDA is made. The warranty provided herein is valid only when used by properly trained individuals. Unless otherwise stated in the Documentation, this warranty is limited to one year from date of shipment when the Product is subjected to normal, proper and intended usage. This warranty does not extend to anyone other than the Buyer. Any model or sample furnished to Buyer is merely illustrative of the general type and quality of goods and does not represent that any Product will conform to such model or sample. NO OTHER WARRANTIES, EXPRESS OR IMPLIED, ARE GRANTED INCLUDING WITHOUT LIMITATION, IMPLIED WARRANTIES OF MERCHANTABILITY, FITNESS FOR ANY PARTICULAR PURPOSE, OR NON INFRINGEMENT. BUYER'S EXCLUSIVE REMEDY FOR NON-CONFORMING PRODUCTS DURING THE WARRANTY PERIOD IS LIMITED TO REPAIR, REPLACEMENT OF OR REFUND FOR THE NON-CONFORMING PRODUCT(S) AT SELLER'S SOLE OPTION. THERE IS NO OBLIGATION TO REPAIR, REPLACE OR REFUND FOR PRODUCTS AS THE RESULT OF (I) ACCIDENT, DISASTER OR EVENT OF FORCE MAJEURE, (II) MISUSE, FAULT OR NEGLIGENCE OF OR BY BUYER, (III) USE OF THE PRODUCTS IN A MANNER FOR WHICH THEY WERE NOT DESIGNED, OR (IV) IMPROPER STORAGE AND HANDLING OF THE PRODUCTS. Unless otherwise expressly stated on the Product or in the documentation accompanying the Product, the Product is intended for research only and is not to be used for any other purpose, including without limitation, unauthorized commercial uses, in vitro diagnostic uses, ex vivo or in vivo therapeutic uses, or any type of consumption by or application to human or animals.