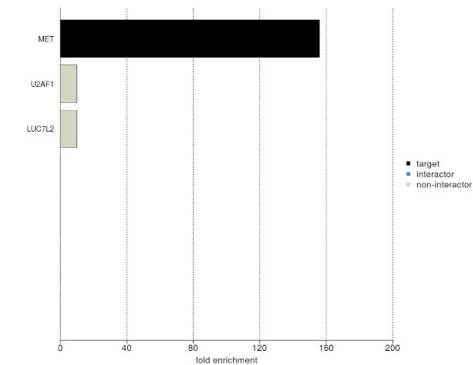


c-Met Monoclonal Antibody (3D4)

Product Details	
Size	500 µL
Species Reactivity	Human
Published Species	Human, Mouse
Host/Isotype	Mouse / IgG2a
Class	Monoclonal
Type	Antibody
Clone	3D4
Conjugate	Unconjugated
Immunogen	Synthetic peptide derived from cytoplasmic domain of human c-Met protein.
Form	Liquid
Purification	purified
Storage buffer	PBS, pH 7.4, with 1% BSA
Contains	0.1% sodium azide
Storage conditions	4° C
RRID	AB_2533047

Applications	Tested Dilution	Publications
Western Blot (WB)	-	5 Publications
Immunohistochemistry (IHC)	-	1 Publication
Immunohistochemistry (Paraffin) (IHC (P))	Assay-dependent	3 Publications
Immunocytochemistry (ICC/IF)	1:250	2 Publications
ELISA (ELISA)	-	1 Publication
Miscellaneous PubMed (Misc)	-	1 Publication

Product Images For c-Met Monoclonal Antibody (3D4)

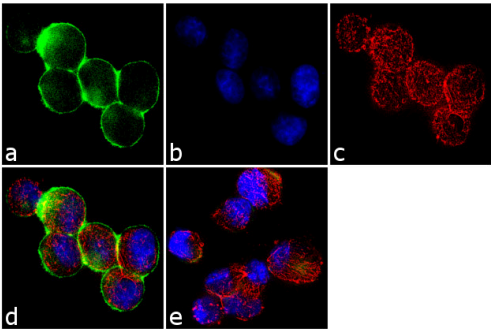


c-Met Antibody (18-7366)

IP-MS enrichment of MET (LFQ intensity): MET was enriched 156-fold from BT549 lysate compared to background proteins, using the optimized IP-MS workflow with Pierce MS-Compatible Magnetic IP Kit protein A/G (Product # 90409) and c-MET antibody (Product # 18-7366). The STRING database (www.string-db.org) was used to identify the protein interactor list. See more information on IP-MS verification of antibody selectivity. {IP-MS}

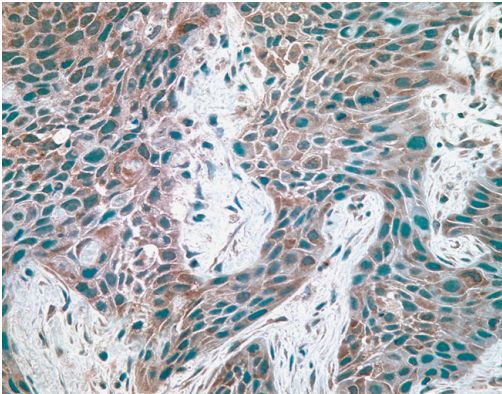
c-Met Antibody (18-7366) in ICC/IF

Immunofluorescence analysis of c-Met was done on 70% confluent log phase MKN45 cells. The cells were fixed with 4% paraformaldehyde for 10 minutes, permeabilized with 0.1% Triton™ X-100 for 10 minutes, and blocked with 1% BSA for 1 hour at room temperature. The cells were labeled c-Met (3D4) Mouse Monoclonal Antibody (187366) at 1:250 dilution in 0.1% BSA and incubated for 3 hours at room temperature and then labeled with Goat anti-Mouse IgG (H+L) Superclonal™ Secondary Antibody, Alexa Fluor® 488 conjugate (Product # A28175) at a dilution of 1:2000 for 45 minutes at room temperature (Panel a: green). Nuclei (Panel b: blue) were stained with SlowFade® Gold Antifade Mountant with DAPI (Product # S36938). F-actin (Panel c: red) was stained with Rhodamine Phalloidin (Product # R415, 1:300). Panel d is a merged image showing cytoplasmic localization. Panel e is a no primary antibody control. The images were captured at 60X magnification.



c-Met Antibody (18-7366) in IHC

Human breast carcinoma tissue stained with mouse anti-c-met antibody (18-7366).



View more figures on thermofisher.cn

Western Blot (5)

<p>eLife</p> <p>Hepatocyte Growth Factor-mediated satellite cells niche perturbation promotes development of distinct sarcoma subtypes.</p> <p>"Published figure using c-Met monoclonal antibody (Product # 18-7366) in Immunohistochemistry"</p> <p>Authors: Morena D, Maestro N, Bersani F, Forni PE, Lingua MF, Foglizzo V, Šepanovi P, Miretti S, Morotti A, Shern JF, Khan J, Ala U, Provero P, Sala V, Crepaldi T, Gasparini P, Casanova M, Ferrari A, Sozzi G, Chiarle R, Ponzetto C, Taulli R</p>	<p>Year 2016</p> <p>Species Human</p>
<p>Nature</p> <p>MET is required for the recruitment of anti-tumoural neutrophils.</p> <p>"18-7366 was used in ELISA and western blot to report that MET is required for neutrophil chemoattraction and cytotoxicity in response to its ligand hepatocyte growth factor."</p> <p>Authors: Finguerra V, Di Conza G, Di Matteo M, Serneels J, Costa S, Thompson AA, Wauters E, Walmsley S, Prenen H, Granot Z, Casazza A, Mazzone M</p>	<p>Year 2015</p> <p>Species Mouse</p>

[View more WB references on thermofisher.cn](#)

Immunohistochemistry (1)

<p>PloS one</p> <p>Suppressive impact of metronomic chemotherapy using UFT and/or cyclophosphamide on mediators of breast cancer dissemination and invasion.</p> <p>"Published figure using c-Met monoclonal antibody (Product # 18-7366) in Immunohistochemistry"</p> <p>Authors: Muñoz R, Hileeto D, Cruz-Muñoz W, Wood GA, Xu P, Man S, Vilorio-Petit A, Kerbel RS</p>	<p>Year 2020</p>
--	----------------------

Immunohistochemistry (Paraffin) (3)

<p>eLife</p> <p>Hepatocyte Growth Factor-mediated satellite cells niche perturbation promotes development of distinct sarcoma subtypes.</p> <p>"Published figure using c-Met monoclonal antibody (Product # 18-7366) in Immunohistochemistry"</p> <p>Authors: Morena D, Maestro N, Bersani F, Forni PE, Lingua MF, Foglizzo V, Šepanovi P, Miretti S, Morotti A, Shern JF, Khan J, Ala U, Provero P, Sala V, Crepaldi T, Gasparini P, Casanova M, Ferrari A, Sozzi G, Chiarle R, Ponzetto C, Taulli R</p>	<p>Year 2016</p> <p>Species Human</p>
--	---

[View more IHC \(P\) references on thermofisher.cn](#)

More applications with references on thermofisher.cn

- ICC/IF (2)
- ELISA (1)
- Misc (1)

For Research Use Only. Not for use in diagnostic procedures. Not for resale without express authorization. Products are warranted to operate or perform substantially in conformance with published Product specifications in effect at the time of sale, as set forth in the Production documentation, specifications and/or accompanying package inserts ("Documentation"). No claim of suitability for use in applications regulated by FDA is made. The warranty provided herein is valid only when used by properly trained individuals. Unless otherwise stated in the Documentation, this warranty is limited to one year from date of shipment when the Product is subjected to normal, proper and intended usage. This warranty does not extend to anyone other than the Buyer. Any model or sample furnished to Buyer is merely illustrative of the general type and quality of goods and does not represent that any Product will conform to such model or sample. NO OTHER WARRANTIES, EXPRESS OR IMPLIED, ARE GRANTED INCLUDING WITHOUT LIMITATION, IMPLIED WARRANTIES OF MERCHANTABILITY, FITNESS FOR ANY PARTICULAR PURPOSE, OR NON INFRINGEMENT. BUYER'S EXCLUSIVE REMEDY FOR NON-CONFORMING PRODUCTS DURING THE WARRANTY PERIOD IS LIMITED TO REPAIR, REPLACEMENT OF OR REFUND FOR THE NON-CONFORMING PRODUCT(S) AT SELLER'S SOLE OPTION. THERE IS NO OBLIGATION TO REPAIR, REPLACE OR REFUND FOR PRODUCTS AS THE RESULT OF (i) ACCIDENT, DISASTER OR EVENT OF FORCE MAJEURE, (ii) MISUSE, FAULT OR NEGLIGENCE OF OR BY BUYER, (iii) USE OF THE PRODUCTS IN A MANNER FOR WHICH THEY WERE NOT DESIGNED, OR (iv) IMPROPER STORAGE AND HANDLING OF THE PRODUCTS. Unless otherwise expressly stated on the Product or in the documentation accompanying the Product, the Product is intended for research only and is not to be used for any other purpose, including without limitation, unauthorized commercial uses, in vitro diagnostic uses, ex vivo or in vivo therapeutic uses, or any type of consumption by or application to human or animals.