

# CD185 (CXCR5) Monoclonal Antibody (MU5UBEE), PE-Cyanine7, eBioscience™

Product Details	
Size	100 Tests
Species Reactivity	Human, Non-human primate, Rhesus monkey
Published Species	Non-human primate, Human, Rhesus monkey
Host/Isotype	Mouse / IgG2b, kappa
Recommended Isotype Control	Mouse IgG2b kappa Isotype Control (eBMG2b), PE-Cyanine7, eBioscience™
Class	Monoclonal
Type	Antibody
Clone	MU5UBEE
Conjugate	PE-Cyanine7
Excitation/Emission Max	569/780 nm
Immunogen	N-terminal extracellular domain
Form	Liquid
Concentration	5 µL/Test
Purification	Affinity chromatography
Storage buffer	PBS, pH 7.2, with 0.2% BSA
Contains	0.09% sodium azide
Storage conditions	4° C, store in dark, DO NOT FREEZE!
RRID	AB_2573540

Applications	Tested Dilution	Publications
Flow Cytometry (Flow)	5 µL (0.06 µg)/test	8 Publications

## Product Specific Information

**Description:** The MU5UBEE monoclonal antibody reacts with human and non-human primate CD185. CD185, which is also known as C-X-C chemokine receptor 5 (CXCR5) and Burkitt lymphoma receptor 1 (BLR1), is a seven transmembrane G protein-coupled receptor originally identified in Burkitt's lymphoma. In peripheral blood, CD185 is expressed on B cells, CD4+ T cells (but not Th1 or Th2 cells), as well as on a subpopulation of memory (CD45RO+) T cells. Circulating CD185+ T cells are in a resting state and migrate to the lymph nodes due to expression of CCR7 and CD62L. In tonsil, CD185 is expressed on nearly all CD4+ cells together with CD45RO and activation markers such as CD69 and ICOS. Tonsillar CD185+ cells have been shown to induce antibody production when co-cultured with B cells, thus supporting their role in providing help to B cells. Furthermore, this chemokine receptor plays a critical role in lymphocyte trafficking, in particular T cell migration into the B cell follicles of germinal centers in response to CXCL13, making CD185 an established marker of follicular helper T cells.

The MU5UBEE monoclonal antibody also crossreacts with Rhesus macaque.

**Applications Reported:** This MU5UBEE antibody has been reported for use in flow cytometric analysis.

**Applications Tested:** This MU5UBEE antibody has been pre-titrated and tested by flow cytometric analysis of normal human peripheral blood cells. This can be used at 5 µL (0.06 µg) per test. A test is defined as the amount (µg) of antibody that will stain a cell sample in a final volume of 100 µL. Cell number should be determined empirically but can range from 10<sup>5</sup> to 10<sup>8</sup>.

cells/test.

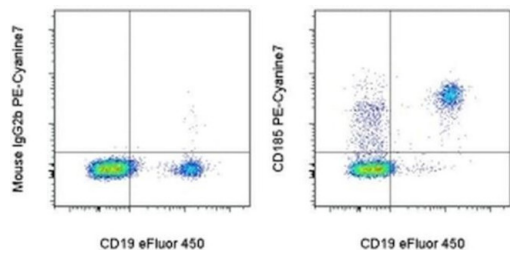
Light sensitivity: This tandem dye is sensitive photo-induced oxidation. Please protect this vial and stained samples from light.

Fixation: Samples can be stored in IC Fixation Buffer (Product # 00-8222) (100 µL cell sample + 100 µL IC Fixation Buffer) or 1-step Fix/Lyse Solution (Product # 00-5333) for up to 3 days in the dark at 4°C with minimal impact on brightness and FRET efficiency/compensation. Some generalizations regarding fluorophore performance after fixation can be made, but clone specific performance should be determined empirically.

Excitation: 488-561 nm; Emission: 775 nm; Laser: Blue Laser, Green Laser, Yellow-Green Laser.

Filtration: 0.2 µm post-manufacturing filtered.

Product Images For CD185 (CXCR5) Monoclonal Antibody (MU5UBEE), PE-Cyanine7, eBioscience™



**CD185 (CXCR5) Antibody (25-9185-42) in Flow**  
Staining of normal human peripheral blood cells with Anti-Human CD19 eFluor® 450 (Product # 48-0199-42) and Mouse IgG2b K Isotype Control PE-Cyanine7 (Product # 25-4732-81) (left) or Anti-Human CD185 (CXCR5) PE-Cyanine7 (Product # 25-4732-81) (right). Cells in the lymphocyte gate were used for analysis.

8 References

Flow Cytometry (8)

<p><b>Cells</b></p> <p><b>Characterization of T Follicular Helper Cells and T Follicular Regulatory Cells in HIV-Infected and Sero-Negative Individuals.</b></p> <p>"25-9185-42 was used in Flow cytometry/Cell sorting to identify cytokines in peripheral blood T follicular helper cells and T follicular regulatory cells."</p> <p>Authors: Salvatore B,Resop RS,Gordon BR,Epeldegui M,Martinez-Maza O,Comin-Anduix B,Lam A,Wu TT, Uittenbogaart CH</p>	<p><b>Year</b> 2023</p> <p><b>Species</b> Human</p>
<p><b>bioRxiv : the preprint server for biology</b></p> <p><b>Protection against SARS-CoV-2 Beta Variant in mRNA-1273 Boosted Nonhuman Primates.</b></p> <p>"25-9185-42 was used in Flow Cytometry to evaluate the immune responses in nonhuman primates that received 100 µg of mRNA-1273 vaccine at 0 and 4 weeks and were boosted at week 29 with mRNA-1273 (homologous) or mRNA-1273. (heterologous), which encompasses the spike sequence of the B.1.351 (beta or ) variant."</p> <p>Authors: Corbett KS,Gagne M,Wagner DA,Connell SO,Narpala SR,Flebbe DR,Andrew SF,Davis RL,Flynn B,Johnston TS,Stringham C,Lai L,Valentin D, Van Ry A,Flinchbaugh Z,Werner AP,Moliva JI,Sripama M,O'Dell S,Schmidt SD,Tucker C,Choi A,Koch M,Bock KW,Minai M,Nagata BM,Alvarado GS,Henry AR,Laboune F,Schramm CA,Zhang Y,Wang L,Choe M,Boyoglu-Barnum S,Shi W,Lamb E,Nurmukhambetova ST,Provost SJ,Donaldson MM,Marquez J,Todd JM,Cook A,Dodson A,Pekosz A,Boritz E,Plouquin A,Doria-Rose N,Pessaint L,Andersen H,Foulds KE,Misasi J,Wu K,Carfi A, Nason MC,Mascola J,Moore IN,Edwards DK,Lewis MG,Suthar MS,Roederer M,McDermott A,Douek DC,Sullivan NJ, Graham BS,Seder RA</p>	<p><b>Year</b> 2021</p> <p><b>Species</b> Rhesus monkey</p>

View more Flow references on thermofisher.cn

More applications with references on thermofisher.cn

For Research Use Only. Not for use in diagnostic procedures. Not for resale without express authorization. Products are warranted to operate or perform substantially in conformance with published Product specifications in effect at the time of sale, as set forth in the Production documentation, specifications and/or accompanying package inserts ("Documentation"). No claim of suitability for use in applications regulated by FDA is made. The warranty provided herein is valid only when used by properly trained individuals. Unless otherwise stated in the Documentation, this warranty is limited to one year from date of shipment when the Product is subjected to normal, proper and intended usage. This warranty does not extend to anyone other than the Buyer. Any model or sample furnished to Buyer is merely illustrative of the general type and quality of goods and does not represent that any Product will conform to such model or sample. NO OTHER WARRANTIES, EXPRESS OR IMPLIED, ARE GRANTED INCLUDING WITHOUT LIMITATION, IMPLIED WARRANTIES OF MERCHANTABILITY, FITNESS FOR ANY PARTICULAR PURPOSE, OR NON INFRINGEMENT. BUYER'S EXCLUSIVE REMEDY FOR NON-CONFORMING PRODUCTS DURING THE WARRANTY PERIOD IS LIMITED TO REPAIR, REPLACEMENT OF OR REFUND FOR THE NON-CONFORMING PRODUCT(S) AT SELLER'S SOLE OPTION. THERE IS NO OBLIGATION TO REPAIR, REPLACE OR REFUND FOR PRODUCTS AS THE RESULT OF (I) ACCIDENT, DISASTER OR EVENT OF FORCE MAJEURE, (II) MISUSE, FAULT OR NEGLIGENCE OF OR BY BUYER, (III) USE OF THE PRODUCTS IN A MANNER FOR WHICH THEY WERE NOT DESIGNED, OR (IV) IMPROPER STORAGE AND HANDLING OF THE PRODUCTS. Unless otherwise expressly stated on the Product or in the documentation accompanying the Product, the Product is intended for research only and is not to be used for any other purpose, including without limitation, unauthorized commercial uses, in vitro diagnostic uses, ex vivo or in vivo therapeutic uses, or any type of consumption by or application to human or animals.