

# ZO-1 Monoclonal Antibody (ZO1-1A12), Alexa Fluor™ 594

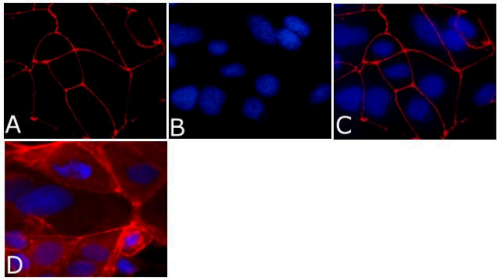
Product Details	
Size	100 µg
Species Reactivity	Dog, Human
Published Species	Rat, Mouse, Human, Chicken
Host/Isotype	Mouse / IgG1, kappa
Class	Monoclonal
Type	Antibody
Clone	ZO1-1A12
Conjugate	Alexa Fluor™ 594
Excitation/Emission Max	590/618 nm
Immunogen	Human recombinant ZO-1 fusion protein encompassing amino acids 334-634
Form	Liquid
Concentration	0.5 mg/mL
Purification	Protein A
Storage buffer	PBS, pH 7.4, with 4.0mg/mL BSA
Contains	0.1% sodium azide
Storage conditions	4° C, store in dark
RRID	AB_2532188

Applications	Tested Dilution	Publications
Western Blot (WB)	1-2 µg/mL	1 Publication
Immunohistochemistry (IHC)	-	11 Publications
Immunohistochemistry (PFA fixed) (IHC (PFA))	-	1 Publication
Immunocytochemistry (ICC/IF)	1-10 µg/mL	15 Publications
ELISA (ELISA)	0.1-1.0 µg/mL	-

Product Images For ZO-1 Monoclonal Antibody (ZO1-1A12), Alexa Fluor™ 594

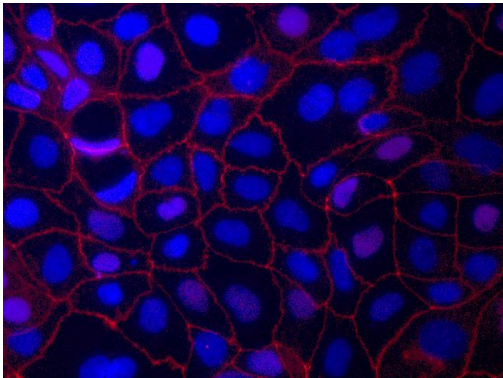
**ZO-1 Antibody (339194) in ICC/IF**

Immunofluorescence analysis of ZO-1/TJP1 Antibody, Alexa Fluor® 594 conjugate (ZO1-1A12) was done on 90% confluent log phase CaCo2 cells. The cells were fixed with 4% paraformaldehyde for 15 minutes, permeabilized with 0.25% Triton™ X-100 for 10 minutes, and blocked with 5% BSA for 1 hour at room temperature. The cells were labeled with ZO-1/TJP1 Antibody, Alexa Fluor® 594 conjugate (ZO1-1A12) (Product # 339194) at 1µg/mL in 1% BSA and incubated for 3 hours at room temperature (Panel a: red). Nuclei (Panel b: blue) were stained with SlowFade® Gold Antifade Mountant with DAPI (Product # S36938). Panel c: red). Panel c is a merged image showing cell junctional localization. Panel d is a no primary antibody control. The images were captured at 40X magnification.



**ZO-1 Antibody (339194) in ICC/IF**

Immunofluorescent staining of ZO-1 in Human Caco-2 cells using mouse anti ZO-1 monoclonal antibody - Alexa Fluor® 594 (Product # 339194). DNA is counter stained with blue Hoechst 33258 (Product # H3569).



[View more figures on thermofisher.cn](https://thermofisher.cn)

## Western Blot (1)

Journal of cell science

Year  
2019

### Evidence for a regulated $\text{Ca}^{2+}$ entry in proximal tubular cells and its implication in calcium stone formation.

"339194 was used in Immunohistochemistry to show the existence of a regulated transcellular  $\text{Ca}^{2+}$  entry pathway in luminal membrane proximal tubule cells induced by  $\text{Ca}^{2+}$  sensing receptor-mediated activation of transient receptor potential canonical 3 channels."

Authors: Ibeh CL,Yiu AJ,Kanaras YL,Paal E,Birnbaumer L,Jose PA,Bandyopadhyay BC

## Immunohistochemistry (11)

Cell reports

Year  
2022

### A synthetic tear protein resolves dry eye through promoting corneal nerve regeneration.

"Published figure using ZO-1 monoclonal antibody (Product # 339194) in Immunohistochemistry"

Authors: Efraim Y,Chen FYT,Cheong KN,Gaylord EA,McNamara NA,Knox SM

International journal of molecular sciences

Year  
2021

### A Novel Method of Mouse RPE Explant Culture and Effective Introduction of Transgenes Using Adenoviral Transduction for *In Vitro* Studies in AMD.

"Published figure using ZO-1 monoclonal antibody (Product # 339194) in Immunohistochemistry"

Authors: Shang P,Stepicheva NA,Liu H,Chowdhury O,Franks J,Sun M,Hose S,Ghosh S,Yazdankhah M,Strizhakova A,Stolz DB,Zigler JS,Sinha D

[View more IHC references on thermofisher.cn](#)

## Immunohistochemistry (PFA fixed) (1)

FASEB journal : official publication of the Federation of American Societies for Experimental Biology

Year  
2020

### A role for mast cells in geographic atrophy.

"339194 was used in Immunohistochemistry (PFA) to demonstrate the fundamental role of choroidal MC involvement in GA disease etiology, and provide new opportunities for understanding GA pathology and identifying novel therapies targeting MCs."

Authors: Ogura S,Baldeosingh R,Bhutto IA,Kambhampati SP,Scott McLeod D,Edwards MM,Rais R,Schubert W,Lutty GA

Species  
Rat

## More applications with references on thermofisher.cn

## ICC/IF (15)

For Research Use Only. Not for use in diagnostic procedures. Not for resale without express authorization. Products are warranted to operate or perform substantially in conformance with published Product specifications in effect at the time of sale, as set forth in the Production documentation, specifications and/or accompanying package inserts ("Documentation"). No claim of suitability for use in applications regulated by FDA is made. The warranty provided herein is valid only when used by properly trained individuals. Unless otherwise stated in the Documentation, this warranty is limited to one year from date of shipment when the Product is subjected to normal, proper and intended usage. This warranty does not extend to anyone other than the Buyer. Any model or sample furnished to Buyer is merely illustrative of the general type and quality of goods and does not represent that any Product will conform to such model or sample. NO OTHER WARRANTIES, EXPRESS OR IMPLIED, ARE GRANTED INCLUDING WITHOUT LIMITATION, IMPLIED WARRANTIES OF MERCHANTABILITY, FITNESS FOR ANY PARTICULAR PURPOSE, OR NON-INFRINGEMENT. BUYER'S EXCLUSIVE REMEDY FOR NON-CONFORMING PRODUCTS DURING THE WARRANTY PERIOD IS LIMITED TO REPAIR, REPLACEMENT OF OR REFUND FOR THE NON-CONFORMING PRODUCT(S) AT SELLER'S SOLE OPTION. THERE IS NO OBLIGATION TO REPAIR, REPLACE OR REFUND FOR PRODUCTS AS THE RESULT OF (i) ACCIDENT, DISASTER OR EVENT OF FORCE MAJEURE, (ii) MISUSE, FAULT OR NEGLIGENCE OF OR BY BUYER, (iii) USE OF THE PRODUCTS IN A MANNER FOR WHICH THEY WERE NOT DESIGNED, OR (iv) IMPROPER STORAGE AND HANDLING OF THE PRODUCTS. Unless otherwise expressly stated on the Product or in the documentation accompanying the Product, the Product is intended for research only and is not to be used for any other purpose, including without limitation, unauthorized commercial uses, in vitro diagnostic uses, ex vivo or in vivo therapeutic uses, or any type of consumption by or application to human or animals.