

Connexin 32 Polyclonal Antibody

Product Details

Size	100 µg
Species Reactivity	Human, Mouse
Published Species	Rat, Mouse, Human
Host/Isotype	Rabbit / IgG
Class	Polyclonal
Type	Antibody
Conjugate	Unconjugated
Immunogen	Synthetic peptide derived from the C-terminal sequence of the human connexin 32 protein, downstream from the sequence identified by another Invitrogen Connexin 32 antibody, Cat. No. 71-0600.
Form	Liquid
Concentration	0.25 mg/mL
Purification	Antigen affinity chromatography
Storage buffer	PBS, pH 7.4
Contains	0.1% sodium azide
Storage conditions	-20°C
RRID	AB_2533177

Applications	Tested Dilution	Publications
Western Blot (WB)	Assay-dependent	4 Publications
Immunohistochemistry (IHC)	-	8 Publications
Immunohistochemistry (Paraffin) (IHC (P))	1:10-1:100	-
Immunohistochemistry (Frozen) (IHC (F))	Assay-dependent	1 Publication
Immunocytochemistry (ICC/IF)	-	5 Publications
Immunoprecipitation (IP)	-	1 Publication
Miscellaneous PubMed (Misc)	-	2 Publications

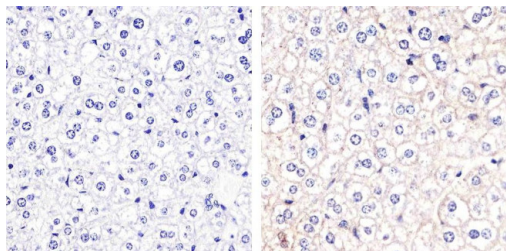
Product Specific Information

34-5700 was used in the immunofluorescence analysis to successfully detect Connexin 32 in gap junctions from mouse liver samples.

Product Images For Connexin 32 Polyclonal Antibody

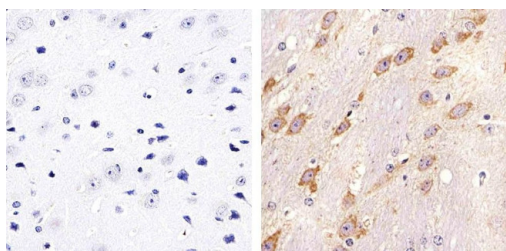
Connexin 32 Antibody (34-5700) in IHC (P)

Immunohistochemistry analysis of Connexin 32 showing staining in the membrane of paraffin-embedded mouse liver tissue (right) compared to a negative control without primary antibody (left). To expose target proteins, antigen retrieval was performed using 10mM sodium citrate (pH 6.0), microwaved for 8-15 min. Following antigen retrieval, tissues were blocked in 3% H₂O₂-methanol for 15 min at room temperature, washed with ddH₂O and PBS, and then probed with a Connexin 32 polyclonal antibody (Product # 34-5700) diluted in 3% BSA-PBS at a dilution of 1:20 overnight at 4°C in a humidified chamber. Tissues were washed extensively in PBST and detection was performed using an HRP-conjugated secondary antibody followed by colorimetric detection using a DAB kit. Tissues were counterstained with hematoxylin and dehydrated with ethanol and xylene to prep for mounting.



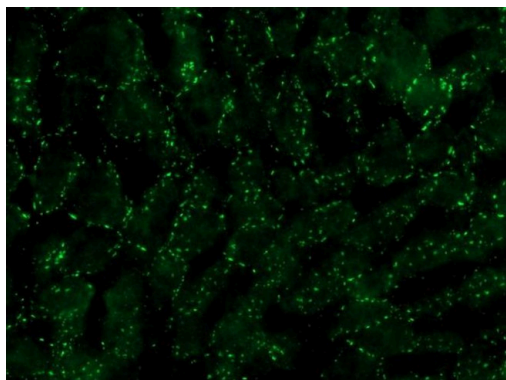
Connexin 32 Antibody (34-5700) in IHC (P)

Immunohistochemistry analysis of Connexin 32 showing staining in the membrane of paraffin-embedded mouse brain tissue (right) compared to a negative control without primary antibody (left). To expose target proteins, antigen retrieval was performed using 10mM sodium citrate (pH 6.0), microwaved for 8-15 min. Following antigen retrieval, tissues were blocked in 3% H₂O₂-methanol for 15 min at room temperature, washed with ddH₂O and PBS, and then probed with a Connexin 32 polyclonal antibody (Product # 34-5700) diluted in 3% BSA-PBS at a dilution of 1:20 overnight at 4°C in a humidified chamber. Tissues were washed extensively in PBST and detection was performed using an HRP-conjugated secondary antibody followed by colorimetric detection using a DAB kit. Tissues were counterstained with hematoxylin and dehydrated with ethanol and xylene to prep for mounting.



Connexin 32 Antibody (34-5700) in IHC

Immunofluorescence analysis of connexin 32 was performed on sections of adult mouse liver. Tissue sections on slides were probed for 24 h at 4°C in a humidified chamber with rabbit polyclonal anti-Cx32 (Product # 34-5700), at an antibody concentration of 1-2 µg/mL diluted in 50 mM Tris-HCl, pH 7.4, containing 1.5% NaCl, 0.3% Triton X-100 (TBST) and 4% normal goat serum. After overnight incubation, sections were washed extensively for 1 h in TBST, and detection of primary antibody was performed for 1.5 h at room temperature with AlexaFluor-488-conjugated donkey anti-rabbit diluted 1:600 in TBST. Sections were then was in TBST, then in TBS (without triton) and then coverslipped with anti-fade medium. Images were taken on a Zeiss Z2 scanning microscope at x40 objective magnification, and show immunofluorescence labelling of Cx32 localized at gap junctions between liver hepatocytes. Data courtesy of Dr. James Nagy's lab.



[View more figures on thermofisher.cn](https://www.thermofisher.cn)

Western Blot (4)

Journal of cellular and molecular medicine

Connexin expression and gap junctional coupling in human cumulus cells: contribution to embryo quality.

Authors: Wang HX,Tong D,El-Gehani F,Tekpetey FR,Kidder GM

Year
2009

Species
Human

Neuroscience

Connexin47, connexin29 and connexin32 co-expression in oligodendrocytes and Cx47 association with zonula occludens-1 (ZO-1) in mouse brain.

"Published figure using Connexin 32 polyclonal antibody (Product # 34-5700) in Western Blot"

Authors: Li X,Ionescu AV,Lynn BD,Lu S,Kamasawa N,Morita M,Davidson KG,Yasumura T,Rash JE,Nagy JI

Year
2004

Species
Mouse

[View more WB references on thermofisher.cn](#)

Immunohistochemistry (8)

The European journal of neuroscience

Re-evaluation of connexins associated with motoneurons in rodent spinal cord, sexually dimorphic motor nuclei and trigeminal motor nucleus.

"34-5700 was used in immunocytochemistry to characterize connexins associated with motoneurons in rodent spinal cord, sexually dimorphic motor nuclei and trigeminal motor nucleus"

Authors: Bautista W,Rash JE,Vanderpool KG,Yasumura T,Nagy JI

Year
2014

Species
Mouse
Rat

Histochemistry and cell biology

The growth pattern of transplanted normal and nodular hepatocytes.

"34-5700 was used in immunohistochemistry to compare the growth patterns of normal and nodular hepatocytes in a transplantation system."

Authors: Doratiotto S,Krause P,Serra MP,Marongiu F,Sini M,Koenig S,Laconi E

Year
2011

Species
Rat

[View more IHC references on thermofisher.cn](#)

More applications with references on thermofisher.cn

IHC (F) (1)

ICC/IF (5)

IP (1)

Misc (2)

For Research Use Only. Not for use in diagnostic procedures. Not for resale without express authorization. Products are warranted to operate or perform substantially in conformance with published Product specifications in effect at the time of sale, as set forth in the Production documentation, specifications and/or accompanying package inserts ("Documentation"). No claim of suitability for use in applications regulated by FDA is made. The warranty provided herein is valid only when used by properly trained individuals. Unless otherwise stated in the Documentation, this warranty is limited to one year from date of shipment when the Product is subjected to normal, proper and intended usage. This warranty does not extend to anyone other than the Buyer. Any model or sample furnished to Buyer is merely illustrative of the general type and quality of goods and does not represent that any Product will conform to such model or sample. NO OTHER WARRANTIES, EXPRESS OR IMPLIED, ARE GRANTED INCLUDING WITHOUT LIMITATION, IMPLIED WARRANTIES OF MERCHANTABILITY, FITNESS FOR ANY PARTICULAR PURPOSE, OR NON-INFRINGEMENT. BUYER'S EXCLUSIVE REMEDY FOR NON-CONFORMING PRODUCTS DURING THE WARRANTY PERIOD IS LIMITED TO REPAIR, REPLACEMENT OF OR REFUND FOR THE NON-CONFORMING PRODUCT(S) AT SELLER'S SOLE OPTION. THERE IS NO OBLIGATION TO REPAIR, REPLACE OR REFUND FOR PRODUCTS AS THE RESULT OF (I) ACCIDENT, DISASTER OR EVENT OF FORCE MAJEURE, (II) MISUSE, FAULT OR NEGLIGENCE OF OR BY BUYER, (III) USE OF THE PRODUCTS IN A MANNER FOR WHICH THEY WERE NOT DESIGNED, OR (IV) IMPROPER STORAGE AND HANDLING OF THE PRODUCTS. Unless otherwise expressly stated on the Product or in the documentation accompanying the Product, the Product is intended for research only and is not to be used for any other purpose, including without limitation, unauthorized commercial uses, in vitro diagnostic uses, ex vivo or in vivo therapeutic uses, or any type of consumption by or application to human or animals.