

ZO-3 Polyclonal Antibody

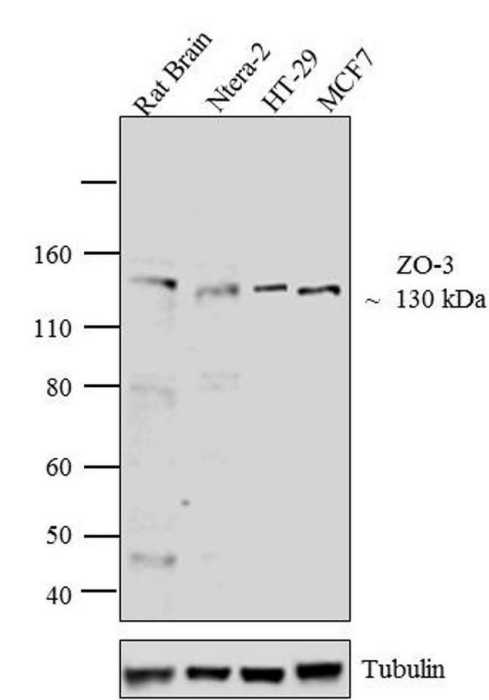
Product Details	
Size	100 µg
Species Reactivity	Dog, Human, Mouse, Rat
Published Species	Dog, Pig, Plant, Mouse, Human
Host/Isotype	Rabbit / IgG
Class	Polyclonal
Type	Antibody
Conjugate	Unconjugated
Immunogen	Synthetic peptide derived from the C-terminal region of the human ZO-3 protein.
Form	Liquid
Concentration	0.25 mg/mL
Purification	Antigen affinity chromatography
Storage buffer	PBS, pH 7.4
Contains	0.1% sodium azide
Storage conditions	-20°C
RRID	AB_2533257

Applications	Tested Dilution	Publications
Western Blot (WB)	1-2 µg/mL	7 Publications
Immunohistochemistry (IHC)	-	1 Publication
Immunocytochemistry (ICC/IF)	1 µg/mL	8 Publications
ELISA (ELISA)	Assay-dependent	-
Immunoprecipitation (IP)	1-2 µg/mL	-
Miscellaneous PubMed (Misc)	-	1 Publication

Product Images For ZO-3 Polyclonal Antibody

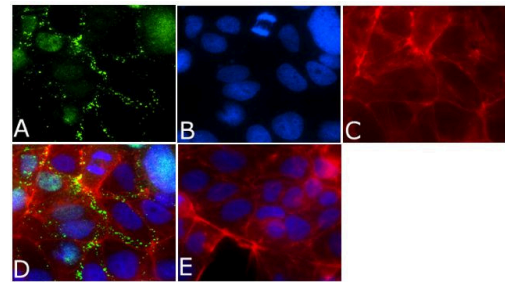
ZO-3 Antibody (36-4100) in WB

Western blot analysis of ZO-3 was performed by loading 30 µg of Rat Brain (lane1), Ntera-2 (lane2), HT-29 (lane3) and MCF7 (lane4) lysate using Novex® NuPAGE® 4-12 % Bis-Tris gel (Product # NP0322BOX), XCell SureLock™ Electrophoresis System (Product # EI0002), Novex® Sharp Pre-Stained Protein Standard (LC5800), and Pierce™ Power Blotter System (22834). Proteins were transferred to a nitrocellulose membrane and blocked with 5 % skim milk for 1 hour at room temperature. ZO-3 was detected at ~ 130 kDa using ZO-3 Rabbit Polyclonal Antibody (Product # 36-4100) at 1-2 µg/mL in 5 % skim milk at 4°C overnight on a rocking platform. Goat Anti-Rabbit IgG - HRP Secondary Antibody (G21234) at 1:5000 dilution was used and chemiluminescent detection was performed using Pierce™ ECL Western Blotting Substrate (Product # 32106).



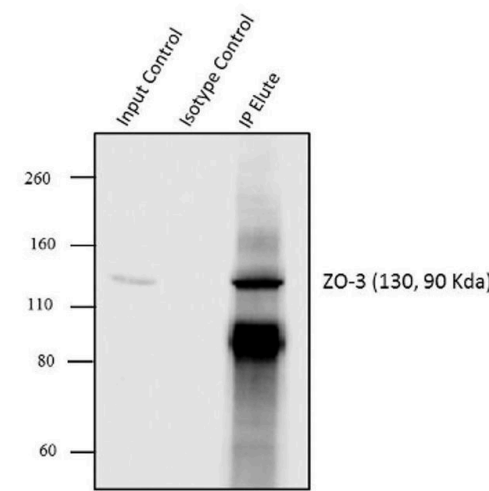
ZO-3 Antibody (36-4100) in ICC/IF

Immunofluorescent analysis of ZO-3/TJP3 Antibody was done on 90% confluent log phase CACO2 cells. The cells were fixed with 4% paraformaldehyde for 15 minutes, permeabilized with 0.25% Triton™ X-100 for 10 minutes, and blocked with 5% BSA for 1 hour at room temperature. The cells were labeled with ZO-3 /TJP3 Antibody (Product # 36-4100) at 1µg/mL in 1% BSA and incubated for 3 hours at room temperature and then labeled with Alexa Fluor 488 Goat Anti-Rabbit IgG Secondary Antibody (Product # A-11008) at a dilution of 1:400 for 45 minutes at room temperature (Panel a: green). Nuclei (Panel b: blue) were stained with SlowFade® Gold Antifade Mountant with DAPI (Product # S36938). F-actin (Panel c: red) was stained with Alexa Fluor 594 Phalloidin (Product # A12381). Panel d is a merged image showing cell junctional localization. Panel e is a no primary antibody control. The images were captured at 40X magnification.



ZO-3 Antibody (36-4100) in IP

Immunoprecipitation of ZO-3 was performed with 5 µg of the ZO-3 Rabbit Polyclonal Antibody (Product # 36-4100) on cell extract from MCF7 using the Dynabeads® Protein A Immunoprecipitation Kit (10006D). Normal Rabbit IgG was used as a negative IP control. Subsequently, western blot analysis was performed using Novex® NuPAGE® 4-12 % Bis-Tris gel (Product # NP0322BOX), XCell SureLock™ Electrophoresis System (Product # EI0002), Novex® Sharp Pre-Stained Protein Standard (LC5800). Proteins were transferred using Pierce™ G2 Fast Blotter (22834SPCL) to a nitrocellulose membrane and blocked with 5% skim milk for 1 hour at room temperature on a rocking platform. ZO-3 was detected at ~130 kDa using ZO-3 Rabbit Polyclonal Antibody (Product # 36-4100) at 1-2 µg/mL in 5 % skim milk at 4°C overnight on a rocking platform. Goat Anti-Rabbit IgG - HRP Secondary Antibody (G21234) at 1:5000 dilution was used and chemiluminescent detection was performed using Pierce™ ECL Western Blotting Substrate (Product # 32106). Lane 1 represents 10% of the total cell extract (input), Lane 2 is the IP performed with Rabbit IgG and Lane 3 represents IP performed with ZO-3 Rabbit Polyclonal Antibody (Product # 36-4100).



View more figures on thermofisher.cn

Western Blot (7)

<div>The Journal of cell biology</div> <div>Angulin-1 seals tricellular contacts independently of tricellulin and claudins.</div> <div>"Published figure using ZO-3 polyclonal antibody (Product # 36-4100) in Western Blot"</div> <div>Authors: Sugawara T,Furuse K,Otani T,Wakayama T,Furuse M</div>	<div>Year</div> <div>2021</div> <div>Species</div> <div>Dog</div>
<div>Nutrients</div> <div>Quercetin Alleviates Oxidative Damage by Activating Nuclear Factor Erythroid 2-Related Factor 2 Signaling in Porcine Enterocytes.</div> <div>"Published figure using ZO-3 polyclonal antibody (Product # 36-4100) in Western Blot"</div> <div>Authors: Jia H,Zhang Y,Si X,Jin Y,Jiang D,Dai Z,Wu Z</div>	<div>Year</div> <div>2021</div> <div>Species</div> <div>Pig</div> <div>Dilution</div> <div>1:2000</div>

[View more WB references on thermofisher.cn](#)

Immunohistochemistry (1)

<div>The Journal of cell biology</div> <div>Angulin-1 seals tricellular contacts independently of tricellulin and claudins.</div> <div>"Published figure using ZO-3 polyclonal antibody (Product # 36-4100) in Western Blot"</div> <div>Authors: Sugawara T,Furuse K,Otani T,Wakayama T,Furuse M</div>	<div>Year</div> <div>2021</div> <div>Species</div> <div>Dog</div>
--	---

Immunocytochemistry (8)

<div>Animal nutrition (Zhongguo xu mu shou yi xue hui)</div> <div>Glycine represses endoplasmic reticulum stress-related apoptosis and improves intestinal barrier by activating mammalian target of rapamycin complex 1 signaling.</div> <div>"36-4100 was used in Immunocytochemistry to explore the protective effect and mechanism of glycine on apoptosis and dysfunction in intestinal barrier induced by brefeldin A, an endoplasmic reticulum stress inducer."</div> <div>Authors: Yang Y,Fan X, Ji Y, Li J, Dai Z, Wu Z</div>	<div>Year</div> <div>2022</div> <div>Species</div> <div>Pig</div>
--	---

[View more ICC/IF references on thermofisher.cn](#)

More applications with references on thermofisher.cn

Misc (1)

For Research Use Only. Not for use in diagnostic procedures. Not for resale without express authorization. Products are warranted to operate or perform substantially in conformance with published Product specifications in effect at the time of sale, as set forth in the Production documentation, specifications and/or accompanying package inserts ("Documentation"). No claim of suitability for use in applications regulated by FDA is made. The warranty provided herein is valid only when used by properly trained individuals. Unless otherwise stated in the Documentation, this warranty is limited to one year from date of shipment when the Product is subjected to normal, proper and intended usage. This warranty does not extend to anyone other than the Buyer. Any model or sample furnished to Buyer is merely illustrative of the general type and quality of goods and does not represent that any Product will conform to such model or sample. NO OTHER WARRANTIES, EXPRESS OR IMPLIED, ARE GRANTED INCLUDING WITHOUT LIMITATION, IMPLIED WARRANTIES OF MERCHANTABILITY, FITNESS FOR ANY PARTICULAR PURPOSE, OR NON-INFRINGEMENT. BUYER'S EXCLUSIVE REMEDY FOR NON-CONFORMING PRODUCTS DURING THE WARRANTY PERIOD IS LIMITED TO REPAIR, REPLACEMENT OF OR REFUND FOR THE NON-CONFORMING PRODUCT(S) AT SELLER'S SOLE OPTION. THERE IS NO OBLIGATION TO REPAIR, REPLACE OR REFUND FOR PRODUCTS AS THE RESULT OF (I) ACCIDENT, DISASTER OR EVENT OF FORCE MAJEURE, (II) MISUSE, FAULT OR NEGLIGENCE OF OR BY BUYER, (III) USE OF THE PRODUCTS IN A MANNER FOR WHICH THEY WERE NOT DESIGNED, OR (IV) IMPROPER STORAGE AND HANDLING OF THE PRODUCTS. Unless otherwise expressly stated on the Product or in the documentation accompanying the Product, the Product is intended for research only and is not to be used for any other purpose, including without limitation, unauthorized commercial uses, in vitro diagnostic uses, ex vivo or in vivo therapeutic uses, or any type of consumption by or application to human or animals.