

B7-H6 Monoclonal Antibody (JAM1EW), PerCP-eFluor™ 710, eBioscience™

Product Details	
Size	100 Tests
Species Reactivity	Human
Host/Isotype	Mouse / IgG1, kappa
Recommended Isotype Control	Mouse IgG1 kappa Isotype Control (P3.6.2.8.1), PerCP-eFluor™ 710, eBioscience™
Class	Monoclonal
Type	Antibody
Clone	JAM1EW
Conjugate	PerCP-eFluor™ 710
Excitation/Emission Max	482/708 nm
Immunogen	B7-H6 recombinant protein
Form	Liquid
Concentration	5 µL/Test
Purification	Affinity chromatography
Storage buffer	PBS, pH 7.2, with 0.2% BSA
Contains	0.09% sodium azide
Storage conditions	4° C, store in dark, DO NOT FREEZE!
RRID	AB_2784692

Applications	Tested Dilution	Publications
Flow Cytometry (Flow)	5 µL (0.5 µg)/test	-

Product Specific Information

Description: This JAM1EW monoclonal antibody recognizes human B7-H6 (NCR3LG1) protein on the surface of cells. It recognizes protein on live but not on paraformaldehyde-fixed cells. The JAM1EW clone is specific to B7-H6. When tested in flow cytometry against cells transfected with either B7-H4, B7-H5, B7-H6, or B7-H7, clone JAM1EW only stains positively on B7-H6 transfected cells.

Applications Tested: This JAM1EW antibody has been pre-diluted and tested by flow cytometric analysis of the HL-60 cell line. This may be used at 5 µL (0.5 µg) per test. A test is defined as the amount (µg) of antibody that will stain a cell sample in a final volume of 100 µL. Cell number should be determined empirically but can range from 10⁵ to 10⁸ cells/test.

PerCP-eFluor 710 emits at 710 nm and is excited with the blue laser (488 nm); it can be used in place of PerCP-Cyanine5.5. We recommend using a 710/50 bandpass filter, however, the 695/40 bandpass filter is an acceptable alternative. Please make sure that your instrument is capable of detecting this fluorochrome.

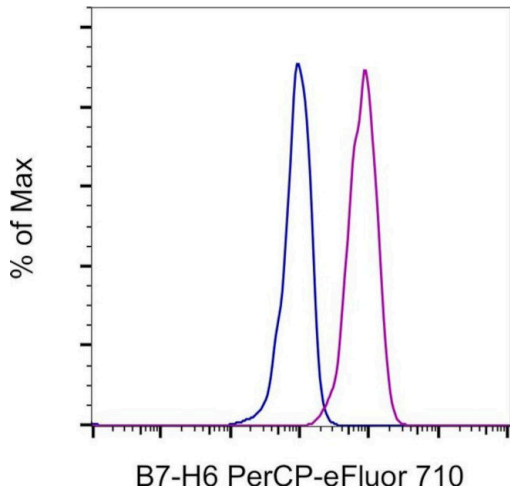
Light sensitivity: This tandem dye is sensitive to photo-induced oxidation. Please protect this vial and stained samples from light.

Fixation: Samples can be stored in IC Fixation Buffer (Product # 00-8222-49) (100 µL of cell sample + 100 µL of IC Fixation Buffer) or 1-step Fix/Lyse Solution (Product # 00-5333-57) for up to 3 days in the dark at 4°C with minimal impact on brightness and FRET efficiency/compensation. Some generalizations regarding fluorophore performance after fixation can be

made, but clone specific performance should be determined empirically.

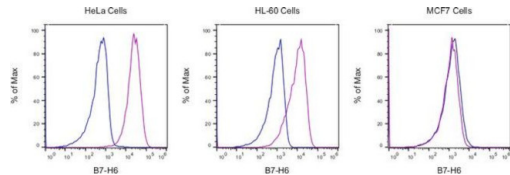
Excitation: 488 nm; Emission: 710 nm; Laser: Blue Laser

Product Images For B7-H6 Monoclonal Antibody (JAM1EW), PerCP-eFluor™ 710, eBioscience™



B7-H6 Antibody (46-6526-42) in Flow

HeLa cells were stained with Mouse IgG1 kappa Isotype Control, PerCP-eFluor 710 (Product # 46-4714-82) (blue) or B7-H6 Monoclonal Antibody, PerCP-eFluor 710 (purple). Total viable cells, as determined by Fixable Viability Dye eFluor 450 (Product # 65-0863-18), were used for analysis.



B7-H6 Antibody (46-6526-42)

Surface staining of cell lines. As expected based on known relative expression patterns, B7-H6 clone JAM1EW stains HeLa and HL-60, but not MCF7 cell lines. Details: HeLa (left histogram), HL-60 (middle histogram), or MCF7 (right histogram) cells were stained with Mouse IgG1 kappa Isotype Control (blue) (clone P3.6.2.8.1) or B7-H6 Monoclonal Antibody (clone JAM1EW, purple). Total viable cells, as determined by Fixable Viability Dye eFluor 450 (Product # 65-0863-18), were used for analysis. {RE}

For Research Use Only. Not for use in diagnostic procedures. Not for resale without express authorization. Products are warranted to operate or perform substantially in conformance with published Product specifications in effect at the time of sale, as set forth in the Production documentation, specifications and/or accompanying package inserts ("Documentation"). No claim of suitability for use in applications regulated by FDA is made. The warranty provided herein is valid only when used by properly trained individuals. Unless otherwise stated in the Documentation, this warranty is limited to one year from date of shipment when the Product is subjected to normal, proper and intended usage. This warranty does not extend to anyone other than the Buyer. Any model or sample furnished to Buyer is merely illustrative of the general type and quality of goods and does not represent that any Product will conform to such model or sample. NO OTHER WARRANTIES, EXPRESS OR IMPLIED, ARE GRANTED INCLUDING WITHOUT LIMITATION, IMPLIED WARRANTIES OF MERCHANTABILITY, FITNESS FOR ANY PARTICULAR PURPOSE, OR NON INFRINGEMENT. BUYER'S EXCLUSIVE REMEDY FOR NON-CONFORMING PRODUCTS DURING THE WARRANTY PERIOD IS LIMITED TO REPAIR, REPLACEMENT OF OR REFUND FOR THE NON-CONFORMING PRODUCT(S) AT SELLER'S SOLE OPTION. THERE IS NO OBLIGATION TO REPAIR, REPLACE OR REFUND FOR PRODUCTS AS THE RESULT OF (I) ACCIDENT, DISASTER OR EVENT OF FORCE MAJEURE, (II) MISUSE, FAULT OR NEGLIGENCE OF OR BY BUYER, (III) USE OF THE PRODUCTS IN A MANNER FOR WHICH THEY WERE NOT DESIGNED, OR (IV) IMPROPER STORAGE AND HANDLING OF THE PRODUCTS. Unless otherwise expressly stated on the Product or in the documentation accompanying the Product, the Product is intended for research only and is not to be used for any other purpose, including without limitation, unauthorized commercial uses, in vitro diagnostic uses, ex vivo or in vivo therapeutic uses, or any type of consumption by or application to human or animals.