

# CD11c Monoclonal Antibody (3.9), eFluor™ 450, eBioscience™

## Product Details

Size	100 Tests
Species Reactivity	Human
Published Species	Human, Mouse
Host/Isotype	Mouse / IgG1, kappa
Recommended Isotype Control	Mouse IgG1 kappa Isotype Control (P3.6.2.8.1), eFluor™ 450, eBioscience™
Class	Monoclonal
Type	Antibody
Clone	3.9
Conjugate	eFluor™ 450
Excitation/Emission Max	405/445 nm
Form	Liquid
Concentration	5 µL/Test
Purification	Affinity chromatography
Storage buffer	PBS, pH 7.2, with 0.2% BSA
Contains	0.09% sodium azide
Storage conditions	4° C, store in dark, DO NOT FREEZE!
RRID	AB_11220072

## Applications

## Tested Dilution

## Publications

Flow Cytometry (Flow)	5 µL (0.5 µg)/test	17 Publications
-----------------------	--------------------	-----------------

## Product Specific Information

**Description:** The 3.9 monoclonal antibody reacts with human CD11c, the 150 kDa integrin alpha X chain. CD11c non-covalently associates with beta 2 integrin to form the CD11c/CD18 heterodimer. This complex is expressed on monocytes, granulocytes, macrophages, NK, dendritic cells and subset of T and B lymphocytes. CD11c/CD18 binds to CD54, iC3b and fibrinogen and plays a role in leukocyte adhesive interactions.

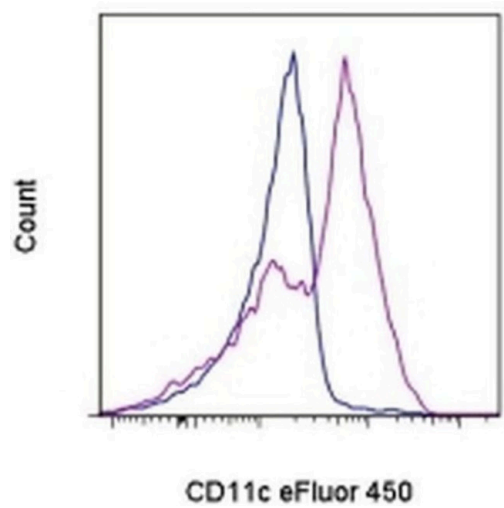
**Applications Reported:** This 3.9 antibody has been reported for use in flow cytometric analysis.

**Applications Tested:** This 3.9 antibody has been pre-titrated and tested by flow cytometric analysis of normal human peripheral blood cells. This can be used at 5 µL (0.5 µg) per test. A test is defined as the amount (µg) of antibody that will stain a cell sample in a final volume of 100 µL. Cell number should be determined empirically but can range from 10<sup>5</sup> to 10<sup>8</sup> cells/test.

eFluor® 450 is an alternative to Pacific Blue®. eFluor® 450 emits at 445 nm and is excited with the Violet laser (405 nm). Please make sure that your instrument is capable of detecting this fluorochrome.

**Excitation:** 405 nm; **Emission:** 445 nm; **Laser:** Violet Laser.

**Filtration:** 0.2 µm post-manufacturing filtered.



**CD11c Antibody (48-0116-42) in Flow**  
Staining of normal human peripheral blood cells with Mouse IgG1 K Isotype Control eFluor® 450 (Product # 48-4714-82) (blue histogram) or Anti-Human CD11c eFluor® 450 (purple histogram). Cells in the monocyte gate were used for analysis.

[View more figures on thermofisher.cn](#)

17 References

Flow Cytometry (17)

<p>Oncoimmunology</p> <p><b>Engineering of a trispecific tumor-targeted immunotherapy incorporating 4-1BB co-stimulation and PD-L1 blockade.</b></p> <p>"48-0116-42 was used in Flow cytometry/Cell sorting to engineer a tri-specific antibody-based molecule that stimulates intratumoral 4-1BB and blocks PD-L1/PD-1 signaling without systemic toxicity and with clinically favorable pharmacokinetics."</p> <p>Authors: Warmuth S,Gunde T,Snell D,Brock M,Weinert C,Simonin A,Hess C,Tietz J,Johansson M,Spiga FM,Heiz R, Flückiger N,Wagen S,Zeberger J,Diem D,Mahler D,Wickihalder B,Muntwiler S,Chatterjee B,Küttner B,Bommer B,Yaman Y,Lichtlen P,Urech D</p>	<p>Year 2022</p> <p>Species Human</p>
<p>JCI insight</p> <p><b>Isolevuglandins disrupt PU.1-mediated C1q expression and promote autoimmunity and hypertension in systemic lupus erythematosus.</b></p> <p>"Published figure using CD11c monoclonal antibody (Product # 48-0116-42) in Flow Cytometry"</p> <p>Authors: Patrick DM,de la Visitación N,Krishnan J,Chen W,Ormseth MJ,Stein CM,Davies SS,Amarnath V,Crofford LJ, Williams JM,Zhao S,Smart CD,Dikalov S,Dikalova A,Xiao L,Van Beusecum JP,Ao M,Fogo AB,Kirabo A,Harrison DG</p>	<p>Year 2022</p>

[View more Flow references on thermofisher.cn](#)

More applications with references on thermofisher.cn

For Research Use Only. Not for use in diagnostic procedures. Not for resale without express authorization. Products are warranted to operate or perform substantially in conformance with published Product specifications in effect at the time of sale, as set forth in the Production documentation, specifications and/or accompanying package inserts ("Documentation"). No claim of suitability for use in applications regulated by FDA is made. The warranty provided herein is valid only when used by properly trained individuals. Unless otherwise stated in the Documentation, this warranty is limited to one year from date of shipment when the Product is subjected to normal, proper and intended usage. This warranty does not extend to anyone other than the Buyer. Any model or sample furnished to Buyer is merely illustrative of the general type and quality of goods and does not represent that any Product will conform to such model or sample. NO OTHER WARRANTIES, EXPRESS OR IMPLIED, ARE GRANTED INCLUDING WITHOUT LIMITATION, IMPLIED WARRANTIES OF MERCHANTABILITY, FITNESS FOR ANY PARTICULAR PURPOSE, OR NON INFRINGEMENT. BUYER'S EXCLUSIVE REMEDY FOR NON-CONFORMING PRODUCTS DURING THE WARRANTY PERIOD IS LIMITED TO REPAIR, REPLACEMENT OF OR REFUND FOR THE NON-CONFORMING PRODUCT(S) AT SELLER'S SOLE OPTION. THERE IS NO OBLIGATION TO REPAIR, REPLACE OR REFUND FOR PRODUCTS AS THE RESULT OF (i) ACCIDENT, DISASTER OR EVENT OF FORCE MAJEURE, (ii) MISUSE, FAULT OR NEGLIGENCE OF OR BY BUYER, (iii) USE OF THE PRODUCTS IN A MANNER FOR WHICH THEY WERE NOT DESIGNED, OR (iv) IMPROPER STORAGE AND HANDLING OF THE PRODUCTS. Unless otherwise expressly stated on the Product or in the documentation accompanying the Product, the Product is intended for research only and is not to be used for any other purpose, including without limitation, unauthorized commercial uses, in vitro diagnostic uses, ex vivo or in vivo therapeutic uses, or any type of consumption by or application to human or animals.