

# IL-8 (1-77) (CXCL8) Monoclonal Antibody (8CH), eFluor™ 450, eBioscience™

Product Details	
Size	100 Tests
Species Reactivity	Human
Host/Isotype	Mouse / IgG1, kappa
Recommended Isotype Control	Mouse IgG1 kappa Isotype Control (P3.6.2.8.1), eFluor™ 450, eBioscience™
Class	Monoclonal
Type	Antibody
Clone	8CH
Conjugate	eFluor™ 450
Excitation/Emission Max	405/445 nm
Immunogen	Human IL-8 recombinant protein
Form	Liquid
Concentration	5 µL/Test
Purification	Affinity chromatography
Storage buffer	PBS, pH 7.2, with 0.2% BSA
Contains	0.09% sodium azide
Storage conditions	4° C, store in dark, DO NOT FREEZE!
RRID	AB_10805749

Applications	Tested Dilution	Publications
Flow Cytometry (Flow)	5 µL (0.06 µg)/test	-

## Product Specific Information

**Description:** This 8CH monoclonal antibody reacts with human IL-8 (CXCL8), a pro-inflammatory CXC chemokine. It is synthesized as a 99 amino acid precursor protein that is further processed into one of four isoforms, with the most common being 72 or 77 amino acids in length. IL-8(77) is secreted primarily by endothelial cells and is thought to be a less potent neutrophil activator than the other forms. It is present at high levels during fetal development, where it mediates angiogenesis rather than inflammation. The predominant form present in adults is IL-8(72), which is expressed by monocytes, macrophages, epithelial cells, and fibroblasts in response to inflammatory stimuli, environmental stress, and steroid hormones. IL-8(72) is essential for the activation and recruitment of neutrophils to sites of inflammation, and has also been found to influence T cell migration. Signaling occurs through the G-protein coupled receptors CXCR1 or CXCR2. IL-8 transcripts are often upregulated in tumors, and it is associated with tumor angiogenesis and metastasis.

**Applications Reported:** This 8CH antibody has been reported for use in intracellular staining followed by flow cytometric analysis.

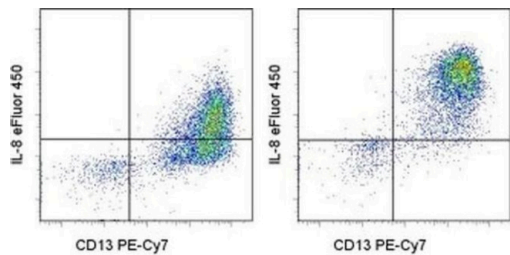
**Applications Tested:** This 8CH antibody has been pre-titrated and tested by intracellular staining followed by flow cytometric analysis. This can be used at 5 µL (0.06 µg) per test. A test is defined as the amount (µg) of antibody that will stain a cell sample in a final volume of 100 µL. Cell number should be determined empirically but can range from 10<sup>5</sup> to 10<sup>8</sup> cells/test.

eFluor® 450 is an alternative to Pacific Blue®. eFluor® 450 emits at 445 nm and is excited with the Violet laser (405 nm). Please make sure that your instrument is capable of detecting this fluorochrome.

Excitation: 405 nm; Emission: 445 nm; Laser: Violet Laser.

Filtration: 0.2 µm post-manufacturing filtered.

Product Images For IL-8 (1-77) (CXCL8) Monoclonal Antibody (8CH), eFluor™ 450, eBioscience™



**IL-8 (1-77) (CXCL8) Antibody (48-8088-42) in Flow**  
Normal human peripheral blood cells unstimulated (left) or stimulated with LPS in the presence of Protein Transport Inhibitor Cocktail (Product # 00-4980-03), stained with Anti-Human CD13 PE-Cy7 (Product # 25-0138-42) followed by fixation and intracellular staining with and Anti-Human IL-8 eFluor® 450. Cells in the monocyte gate were used for analysis.

For Research Use Only. Not for use in diagnostic procedures. Not for resale without express authorization. Products are warranted to operate or perform substantially in conformance with published Product specifications in effect at the time of sale, as set forth in the Production documentation, specifications and/or accompanying package inserts ("Documentation"). No claim of suitability for use in applications regulated by FDA is made. The warranty provided herein is valid only when used by properly trained individuals. Unless otherwise stated in the Documentation, this warranty is limited to one year from date of shipment when the Product is subjected to normal, proper and intended usage. This warranty does not extend to anyone other than the Buyer. Any model or sample furnished to Buyer is merely illustrative of the general type and quality of goods and does not represent that any Product will conform to such model or sample. NO OTHER WARRANTIES, EXPRESS OR IMPLIED, ARE GRANTED INCLUDING WITHOUT LIMITATION, IMPLIED WARRANTIES OF MERCHANTABILITY, FITNESS FOR ANY PARTICULAR PURPOSE, OR NON INFRINGEMENT. BUYER'S EXCLUSIVE REMEDY FOR NON-CONFORMING PRODUCTS DURING THE WARRANTY PERIOD IS LIMITED TO REPAIR, REPLACEMENT OF OR REFUND FOR THE NON-CONFORMING PRODUCT(S) AT SELLER'S SOLE OPTION. THERE IS NO OBLIGATION TO REPAIR, REPLACE OR REFUND FOR PRODUCTS AS THE RESULT OF (I) ACCIDENT, DISASTER OR EVENT OF FORCE MAJEURE, (II) MISUSE, FAULT OR NEGLIGENCE OF OR BY BUYER, (III) USE OF THE PRODUCTS IN A MANNER FOR WHICH THEY WERE NOT DESIGNED, OR (IV) IMPROPER STORAGE AND HANDLING OF THE PRODUCTS. Unless otherwise expressly stated on the Product or in the documentation accompanying the Product, the Product is intended for research only and is not to be used for any other purpose, including without limitation, unauthorized commercial uses, in vitro diagnostic uses, ex vivo or in vivo therapeutic uses, or any type of consumption by or application to human or animals.