

# CD300c Monoclonal Antibody (TX45), eFluor™ 660, eBioscience™

Product Details	
Size	100 Tests
Species Reactivity	Human
Published Species	Human
Host/Isotype	Mouse / IgG1, kappa
Recommended Isotype Control	Mouse IgG1 kappa Isotype Control (P3.6.2.8.1), eFluor™ 660, eBioscience™
Class	Monoclonal
Type	Antibody
Clone	TX45
Conjugate	eFluor™ 660
Excitation/Emission Max	651/668 nm
Form	Liquid
Concentration	5 µL/Test
Purification	Affinity chromatography
Storage buffer	PBS, pH 7.2, with 0.2% BSA
Contains	0.09% sodium azide
Storage conditions	4° C, store in dark, DO NOT FREEZE!
RRID	AB_11149130

Applications	Tested Dilution	Publications
Flow Cytometry (Flow)	5 µL (0.5 µg)/test	1 Publication

## Product Specific Information

**Description:** This TX45 monoclonal antibody reacts with human CD300c (also known as LIR). CD300c belongs to the myeloid-associated immunoglobulin-like receptor (MAIR) family of genes located on human chromosome 17, a syntenic region of mouse chromosome 11. This 25-kDa type I membrane protein has a single extracellular Ig-like domain and a short cytoplasmic domain. CD300c is expressed on subsets of T and B cells, NK cells, granulocytes, dendritic cells, mast cells, monocytes, and peritoneal macrophages, where CD300c mediates proinflammatory cytokine production. This molecule has also been linked to the regulation of TNF alpha and IFN alpha secretion in activated plasmacytoid dendritic cells. CD300c associates with the adapter protein DAP12, as well as the Fc gamma.

**Applications Reported:** This TX45 antibody has been reported for use in flow cytometric analysis.

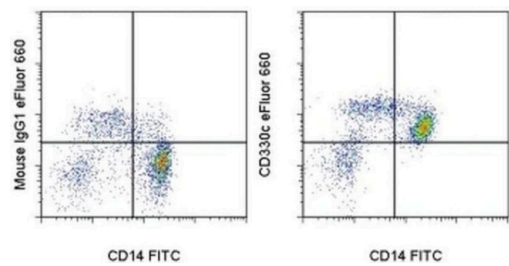
**Applications Tested:** This TX45 antibody has been pre-titrated and tested by flow cytometric analysis of normal human peripheral blood cells. This can be used at 5 µL (0.5 µg) per test. A test is defined as the amount (µg) of antibody that will stain a cell sample in a final volume of 100 µL. Cell number should be determined empirically but can range from 10<sup>5</sup> to 10<sup>8</sup> cells /test.

eFluor® 660 is a replacement for Alexa Fluor® 647. eFluor® 660 emits at 659 nm and is excited with the red laser (633 nm). Please make sure that your instrument is capable of detecting this fluorochrome.

Excitation: 633-647 nm; Emission: 668 nm; Laser: Red Laser.

Filtration: 0.2 µm post-manufacturing filtered.

Product Images For CD300c Monoclonal Antibody (TX45), eFluor™ 660, eBioscience™



**CD300c Antibody (50-3006-42) in Flow**  
Staining of normal human peripheral blood cells with Anti-Human CD14 FITC (Product # 11-0149-42) and Mouse IgG1 K Isotype Control FITC (Product # 11-4714-42) (left) or Anti-Human CD300c eFluor® 660 (right). Cells in the monocyte gate were used for analysis.

1 Reference

Flow Cytometry (1)

Frontiers in immunology	Year 2019
Monocytes Phenotype and Cytokine Production in Human Immunodeficiency Virus-1 Infected Patients Receiving a Modified Vaccinia Ankara-Based HIV-1 Vaccine: Relationship to CD300 Molecules Expression.	Species Human
"50-3006 was used in Flow cytometry/Cell sorting to describe the impact of HIV-1 and of the MVA-B vaccine in cytokine production and monocytes phenotype."	
Authors: Vitallé J,Zenarruzabeitia O,Terrén I,Plana M,Guardo AC,Leal L,Peña J,García F,Borrego F	

For Research Use Only. Not for use in diagnostic procedures. Not for resale without express authorization. Products are warranted to operate or perform substantially in conformance with published Product specifications in effect at the time of sale, as set forth in the Production documentation, specifications and/or accompanying package inserts ("Documentation"). No claim of suitability for use in applications regulated by FDA is made. The warranty provided herein is valid only when used by properly trained individuals. Unless otherwise stated in the Documentation, this warranty is limited to one year from date of shipment when the Product is subjected to normal, proper and intended usage. This warranty does not extend to anyone other than the Buyer. Any model or sample furnished to Buyer is merely illustrative of the general type and quality of goods and does not represent that any Product will conform to such model or sample. NO OTHER WARRANTIES, EXPRESS OR IMPLIED, ARE GRANTED INCLUDING WITHOUT LIMITATION, IMPLIED WARRANTIES OF MERCHANTABILITY, FITNESS FOR ANY PARTICULAR PURPOSE, OR NON-INFRINGEMENT. BUYER'S EXCLUSIVE REMEDY FOR NON-CONFORMING PRODUCTS DURING THE WARRANTY PERIOD IS LIMITED TO REPAIR, REPLACEMENT OF OR REFUND FOR THE NON-CONFORMING PRODUCT(S) AT SELLER'S SOLE OPTION. THERE IS NO OBLIGATION TO REPAIR, REPLACE OR REFUND FOR PRODUCTS AS THE RESULT OF (I) ACCIDENT, DISASTER OR EVENT OF FORCE MAJEURE, (II) MISUSE, FAULT OR NEGLIGENCE OF OR BY BUYER, (III) USE OF THE PRODUCTS IN A MANNER FOR WHICH THEY WERE NOT DESIGNED, OR (IV) IMPROPER STORAGE AND HANDLING OF THE PRODUCTS. Unless otherwise expressly stated on the Product or in the documentation accompanying the Product, the Product is intended for research only and is not to be used for any other purpose, including without limitation, unauthorized commercial uses, in vitro diagnostic uses, ex vivo or in vivo therapeutic uses, or any type of consumption by or application to human or animals.