

GP6 Monoclonal Antibody (HY101), eFluor™ 660, eBioscience™

Product Details	
Size	100 Tests
Species Reactivity	Human
Published Species	Human
Host/Isotype	Mouse / IgG1, kappa
Recommended Isotype Control	Mouse IgG1 kappa Isotype Control (P3.6.2.8.1), eFluor™ 660, eBioscience™
Class	Monoclonal
Type	Antibody
Clone	HY101
Conjugate	eFluor™ 660
Excitation/Emission Max	651/668 nm
Form	Liquid
Concentration	5 µL/Test
Purification	Affinity chromatography
Storage buffer	PBS, pH 7.2, with 0.2% BSA
Contains	0.09% sodium azide
Storage conditions	4° C, store in dark, DO NOT FREEZE!
RRID	AB_11220479

Applications	Tested Dilution	Publications
Flow Cytometry (Flow)	5 µL (0.25 µg)/test	1 Publication

Product Specific Information

Description: The HY101 monoclonal antibody reacts with the glycoprotein VI (GPVI), a 62-kDa type-I transmembrane glycoprotein that is expressed on mature megakaryotes and platelets. GPVI associates with the Fc receptor (FcR) gamma-chain to form a high affinity receptor for collagen. GPVI has also been reported to bind convulxin (Cvx). Phosphorylation of the ITAMs present on the FcR gamma-chain leads to recruitment of Src family kinases and activation of downstream signal transduction. GPVI has been reported to play a critical role in platelet activation and aggregation.

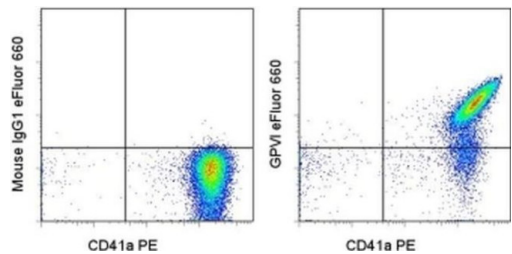
Applications Reported: This HY101 antibody has been reported for use in flow cytometric analysis.

Applications Tested: This HY101 antibody has been pre-titrated and tested by flow cytometric analysis of normal human platelets. This can be used at 5 µL (0.25 µg) per test. A test is defined as the amount (µg) of antibody that will stain a cell sample in a final volume of 100 µL. Cell number should be determined empirically but can range from 10⁵ to 10⁸ cells/test.

eFluor® 660 is a replacement for Alexa Fluor® 647. eFluor® 660 emits at 659 nm and is excited with the red laser (633 nm). Please make sure that your instrument is capable of detecting this fluorochrome.

Excitation: 633-647 nm; **Emission:** 668 nm; **Laser:** Red Laser.

Filtration: 0.2 µm post-manufacturing filtered.



GP6 Antibody (50-9813-42) in Flow

Staining of normal human platelets with Anti-Human CD41a PE (Product # 12-0419-42) and Mouse IgG1 K Isotype Control eFluor® 660 (Product # 50-4714-82) (left) or Anti-Human Glycoprotein VI eFluor® 660 (right). Total viable cells were used for analysis.

1 Reference

Flow Cytometry (1)

Thrombosis research	Year 2015
Shear-induced platelet receptor shedding by non-physiological high shear stress with short exposure time: glycoprotein Ib and glycoprotein VI.	Species Human
"50-9813-42 was used in Flow cytometry/Cell sorting to examine the shedding of two key platelet receptors after exposure to the non-physiological high shear stress environment which commonly exists in blood contacting medical devices and stenotic blood vessels."	
Authors: Chen Z,Mondal NK,Ding J,Gao J,Griffith BP,Wu ZJ	

For Research Use Only. Not for use in diagnostic procedures. Not for resale without express authorization. Products are warranted to operate or perform substantially in conformance with published Product specifications in effect at the time of sale, as set forth in the Production documentation, specifications and/or accompanying package inserts ("Documentation"). No claim of suitability for use in applications regulated by FDA is made. The warranty provided herein is valid only when used by properly trained individuals. Unless otherwise stated in the Documentation, this warranty is limited to one year from date of shipment when the Product is subjected to normal, proper and intended usage. This warranty does not extend to anyone other than the Buyer. Any model or sample furnished to Buyer is merely illustrative of the general type and quality of goods and does not represent that any Product will conform to such model or sample. NO OTHER WARRANTIES, EXPRESS OR IMPLIED, ARE GRANTED INCLUDING WITHOUT LIMITATION, IMPLIED WARRANTIES OF MERCHANTABILITY, FITNESS FOR ANY PARTICULAR PURPOSE, OR NON-INFRINGEMENT. BUYER'S EXCLUSIVE REMEDY FOR NON-CONFORMING PRODUCTS DURING THE WARRANTY PERIOD IS LIMITED TO REPAIR, REPLACEMENT OF OR REFUND FOR THE NON-CONFORMING PRODUCT(S) AT SELLER'S SOLE OPTION. THERE IS NO OBLIGATION TO REPAIR, REPLACE OR REFUND FOR PRODUCTS AS THE RESULT OF (i) ACCIDENT, DISASTER OR EVENT OF FORCE MAJEURE, (ii) MISUSE, FAULT OR NEGLIGENCE OF OR BY BUYER, (iii) USE OF THE PRODUCTS IN A MANNER FOR WHICH THEY WERE NOT DESIGNED, OR (iv) IMPROPER STORAGE AND HANDLING OF THE PRODUCTS. Unless otherwise expressly stated on the Product or in the documentation accompanying the Product, the Product is intended for research only and is not to be used for any other purpose, including without limitation, unauthorized commercial uses, in vitro diagnostic uses, ex vivo or in vivo therapeutic uses, or any type of consumption by or application to human or animals.