

IFN gamma Polyclonal Antibody, Biotin, PeproTech®

Product Details

| | |
|--------------------|--|
| Size | 2 x 500 µg |
| Species Reactivity | Rat |
| Host/Isotype | Goat |
| Class | Polyclonal |
| Type | Antibody |
| Conjugate | Biotin |
| Immunogen | E.coli-derived Recombinant Rat IFN-gamma |
| Form | Lyophilized |
| Concentration | 0.1-1.0 mg/mL |
| Purification | Antigen affinity chromatography |
| Storage buffer | PBS |
| Contains | no preservative |
| Storage conditions | -20°C |

| Applications | Tested Dilution | Publications |
|-------------------|-----------------|--------------|
| Western Blot (WB) | 0.1-0.2 µg/mL | - |
| ELISA (ELISA) | 0.25-1.0 µg/mL | - |

Product Specific Information

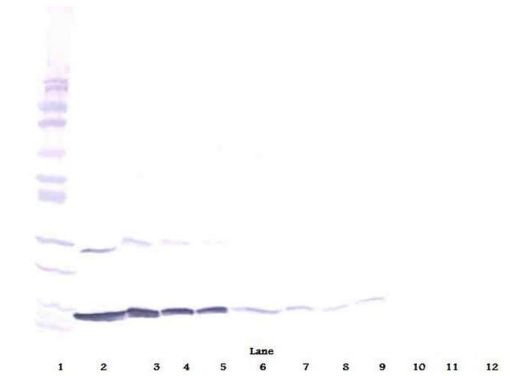
AA Sequence of recombinant protein: MQGTLIESLE SLKNYFNSSS MDAMEGKSLL LDIWRNWQKD GNTKILESQI ISFYLRLEFEV LKDNQAISNN ISVIESHLIT NFFSNSKAKK DAFMSIAKFE VNNPQIQHKA VNELIRVIHQ LSPESSLRKR KRSRC.

Preparation: Produced from sera of goats immunized with highly pure Recombinant Rat IFN-gamma. Anti-Rat IFN-gamma-specific antibody was purified by affinity chromatography and then biotinylated.

Sandwich ELISA: To detect Rat IFN-gamma by sandwich ELISA (using 100 µL/well antibody solution) a concentration of 0.25-1.0 µg/mL of this antibody is required. This biotinylated polyclonal antibody, in conjunction with PeproTech Polyclonal Anti-Rat IFN-gamma (500-P122G) as a capture antibody, allows the detection of at least 0.2-0.4 ng/well of Recombinant Rat IFN-gamma.

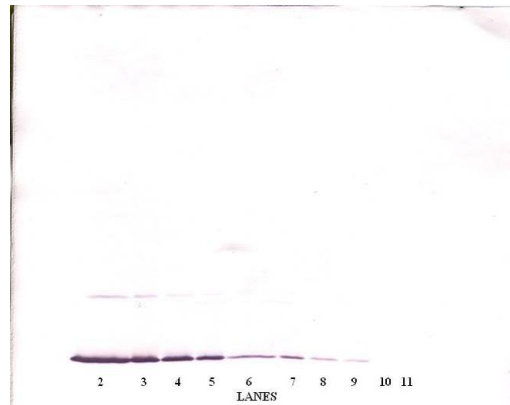
Western Blot: To detect Rat IFN-gamma by Western Blot analysis this antibody can be used at a concentration of 0.1-0.2 µg/mL. When used in conjunction with compatible secondary reagents, the detection limit for Recombinant Rat IFN-gamma is 1.5-3.0 ng/lane, under either reducing or non-reducing conditions.

500-P122GBT-1MG will be provided as 2 x 500 µg



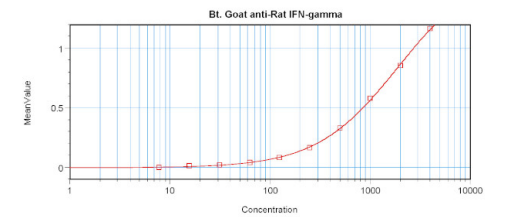
IFN gamma Antibody (500-P122GBT-1MG) in WB

Western Blot: To detect Rat IFN-gamma by Western Blot analysis IFN gamma Polyclonal Antibody, Biotin (Product # 500-P122GBT-1MG) can be used at a concentration of 0.1-0.2 µg/mL. When used in conjunction with compatible secondary reagents, the detection limit for Recombinant Rat IFN-gamma is 1.5-3.0 ng/lane, under either reducing or non-reducing conditions.



IFN gamma Antibody (500-P122GBT-1MG) in WB

Western Blot: To detect Rat IFN-gamma by Western Blot analysis IFN gamma Polyclonal Antibody, Biotin (Product # 500-P122GBT-1MG) can be used at a concentration of 0.1-0.2 µg/mL. When used in conjunction with compatible secondary reagents, the detection limit for Recombinant Rat IFN-gamma is 1.5-3.0 ng/lane, under either reducing or non-reducing conditions.



IFN gamma Antibody (500-P122GBT-1MG) in ELISA

Sandwich ELISA: To detect Rat IFN-gamma by sandwich ELISA (using 100 µL /well antibody solution) a concentration of 0.25-1.0 µg/mL of IFN gamma Polyclonal Antibody, Biotin (Product # 500-P122GBT-1MG) is required. This biotinylated polyclonal antibody, in conjunction with PeproTech IFN gamma Polyclonal Antibody (Product # 500-P122G-1MG) as a capture antibody, allows the detection of at least 0.2-0.4 ng/well of Recombinant Rat IFN-gamma.

For Research Use Only. Not for use in diagnostic procedures. Not for resale without express authorization. Products are warranted to operate or perform substantially in conformance with published Product specifications in effect at the time of sale, as set forth in the Production documentation, specifications and/or accompanying package inserts ("Documentation"). No claim of suitability for use in applications regulated by FDA is made. The warranty provided herein is valid only when used by properly trained individuals. Unless otherwise stated in the Documentation, this warranty is limited to one year from date of shipment when the Product is subjected to normal, proper and intended usage. This warranty does not extend to anyone other than the Buyer. Any model or sample furnished to Buyer is merely illustrative of the general type and quality of goods and does not represent that any Product will conform to such model or sample. NO OTHER WARRANTIES, EXPRESS OR IMPLIED, ARE GRANTED INCLUDING WITHOUT LIMITATION, IMPLIED WARRANTIES OF MERCHANTABILITY, FITNESS FOR ANY PARTICULAR PURPOSE, OR NON INFRINGEMENT. BUYER'S EXCLUSIVE REMEDY FOR NON-CONFORMING PRODUCTS DURING THE WARRANTY PERIOD IS LIMITED TO REPAIR, REPLACEMENT OF OR REFUND FOR THE NON-CONFORMING PRODUCT(S) AT SELLER'S SOLE OPTION. THERE IS NO OBLIGATION TO REPAIR, REPLACE OR REFUND FOR PRODUCTS AS THE RESULT OF (I) ACCIDENT, DISASTER OR EVENT OF FORCE MAJEURE, (II) MISUSE, FAULT OR NEGLIGENCE OF OR BY BUYER, (III) USE OF THE PRODUCTS IN A MANNER FOR WHICH THEY WERE NOT DESIGNED, OR (IV) IMPROPER STORAGE AND HANDLING OF THE PRODUCTS. Unless otherwise expressly stated on the Product or in the documentation accompanying the Product, the Product is intended for research only and is not to be used for any other purpose, including without limitation, unauthorized commercial uses, in vitro diagnostic uses, ex vivo or in vivo therapeutic uses, or any type of consumption by or application to human or animals.