

# SMAD3 Polyclonal Antibody

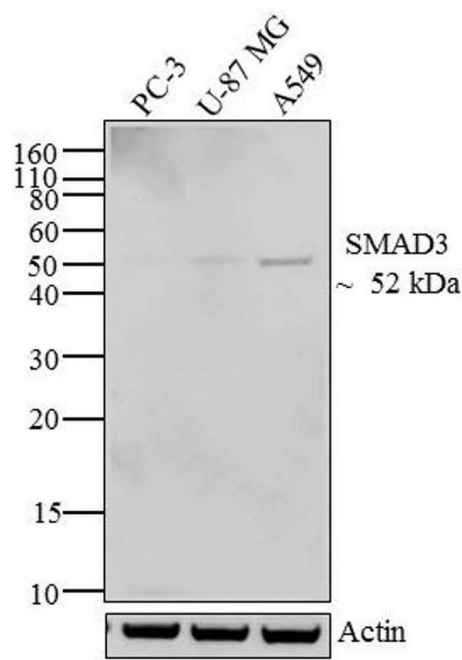
Product Details	
Size	100 µg
Species Reactivity	Human
Published Species	Dog, Tag, Mink, Rat, Non-human primate, Virus, Deer, Luciferase, Human, Mouse
Host/Isotype	Rabbit / IgG
Class	Polyclonal
Type	Antibody
Conjugate	Unconjugated
Immunogen	A 20 amino acid synthetic peptide derived from a central portion of the linker domain of human Smad3
Form	Liquid
Concentration	0.25 mg/mL
Purification	Antigen affinity chromatography
Storage buffer	PBS, pH 7.4
Contains	0.1% sodium azide
Storage conditions	-20°C
RRID	AB_2533897

Applications	Tested Dilution	Publications
Western Blot (WB)	1-3 µg/mL	62 Publications
Immunohistochemistry (IHC)	1.0 µg/mL	10 Publications
Immunohistochemistry (Paraffin) (IHC (P))	-	3 Publications
Immunocytochemistry (ICC/IF)	1:100-1:500	12 Publications
ELISA (ELISA)	0.1-1.0 µg/mL	-
Immunoprecipitation (IP)	-	3 Publications
ChIP assay (ChIP)	2 µg/10^6 cells	4 Publications
Gel Shift (GS)	-	2 Publications
Miscellaneous PubMed (Misc)	-	5 Publications

Product Images For SMAD3 Polyclonal Antibody

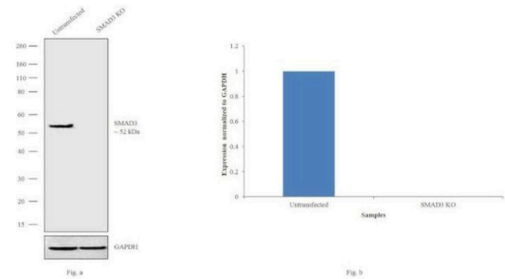
SMAD3 Antibody (51-1500) in WB

Western blot analysis of SMAD3 was performed by loading 35 µg of PC-3 (lane1), U-87 MG (lane2) and a549 (lane3) cell lysate using Novex®NuPAGE® 12 % Bis-Tris gel (Product # NP0341BOX), XCell SureLock Electrophoresis System (Product # EI0002), Novex® Sharp Pre-Stained Protein Standard (LC5800), and iBlot® Dry Blotting System (IB21001). Proteins were transferred to a nitrocellulose membrane and blocked with 5% skim milk for 1 hour at room temperature. SMAD3 was detected at ~ 52 kDa using SMAD3 Rabbit Polyclonal Antibody (Product # 51-1500) at 1-3 µg/mL in 5% skim milk at 4°C overnight on a rocking platform. Goat Anti-Rabbit IgG - HRP Secondary Antibody (G21234) at 1: 5000 dilution was used and chemiluminescent detection was performed using Pierce™ ECL Western Blotting Substrate (Product # 32106).



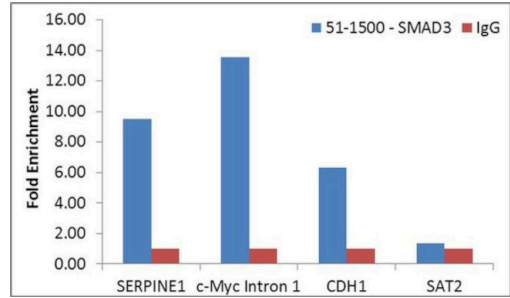
SMAD3 Antibody (51-1500)

Antibody specificity was demonstrated by CRISPR-Cas9 mediated knockout of target protein. Loss of signal was observed for target protein in SMAD3 knockout (KO) cell line using Anti-SMAD3 polyclonal Antibody (Product # 51-1500). {KO}



SMAD3 Antibody (51-1500)

Antibody specificity was demonstrated by detection of enrichment of the target protein at specific gene loci. Chromatin Immunoprecipitation (ChIP) was performed using Anti-SMAD3 Rabbit Polyclonal Antibody (Product # 51-1500) using PCR primer pairs over SERPINE1, c-Myc Intron 1 and CDH1 (active) and SAT2 satellite repeats (inactive). {RE}



View more figures on [thermofisher.cn](https://thermofisher.cn)

## Western Blot (62)

Frontiers in oncology

### ***In Vitro* Characterization of <sup>177</sup>Lu-DOTA-M5A Anti-Carcinoembryonic Antigen Humanized Antibody and HSP90 Inhibition for Potentiated Radioimmunotherapy of Colorectal Cancer.**

"Published figure using SMAD3 polyclonal antibody (Product # 51-1500) in Western Blot"

Authors: Mohajershojai T, Jha P, Boström A, Frejd FY, Yazaki PJ, Nestor M

Year  
2022

Frontiers in endocrinology

### **Differential Role of Smad2 and Smad3 in the Acquisition of an Endovascular Trophoblast-Like Phenotype and Preeclampsia.**

"51-1500 was used in Western Blotting to suggest that Smad2 and Smad3 have opposite functions in the acquisition of an enEVT-like phenotype and defects in Smad3 activation are associated with PE."

Authors: Brki J, Dunk C, Shan Y, O'Brien JA, Lye P, Qayyum S, Yang P, Matthews SG, Lye SJ, Peng C

Year  
2021

Species  
Human

Dilution  
1:150

[View more WB references on thermofisher.cn](#)

## Immunohistochemistry (10)

Scientific reports

### **Relationship between ETS Transcription Factor ETV1 and TGF- $\beta$ regulated SMAD Proteins in Prostate Cancer.**

"Published figure using SMAD3 polyclonal antibody (Product # 51-1500) in Western Blot"

Authors: Oh S, Shin S, Song H, Grande JP, Janknecht R

Year  
2019

Molecular medicine reports

### **miR127 aggravates myocardial failure by promoting the TGF1/Smad3 signaling.**

"Published figure using SMAD3 polyclonal antibody (Product # 51-1500) in Immunofluorescence"

Authors: Xu H, Li F

Year  
2018

[View more IHC references on thermofisher.cn](#)

## More applications with references on thermofisher.cn

IHC (P) (3)

ICC/IF (12)

IP (3)

ChIP (4)

GS (2)

Misc (5)

For Research Use Only. Not for use in diagnostic procedures. Not for resale without express authorization. Products are warranted to operate or perform substantially in conformance with published Product specifications in effect at the time of sale, as set forth in the Production documentation, specifications and/or accompanying package inserts ("Documentation"). No claim of suitability for use in applications regulated by FDA is made. The warranty provided herein is valid only when used by properly trained individuals. Unless otherwise stated in the Documentation, this warranty is limited to one year from date of shipment when the Product is subjected to normal, proper and intended usage. This warranty does not extend to anyone other than the Buyer. Any model or sample furnished to Buyer is merely illustrative of the general type and quality of goods and does not represent that any Product will conform to such model or sample. NO OTHER WARRANTIES, EXPRESS OR IMPLIED, ARE GRANTED INCLUDING WITHOUT LIMITATION, IMPLIED WARRANTIES OF MERCHANTABILITY, FITNESS FOR ANY PARTICULAR PURPOSE, OR NON-INFRINGEMENT. BUYER'S EXCLUSIVE REMEDY FOR NON-CONFORMING PRODUCTS DURING THE WARRANTY PERIOD IS LIMITED TO REPAIR, REPLACEMENT OF OR REFUND FOR THE NON-CONFORMING PRODUCT(S) AT SELLER'S SOLE OPTION. THERE IS NO OBLIGATION TO REPAIR, REPLACE OR REFUND FOR PRODUCTS AS THE RESULT OF (i) ACCIDENT, DISASTER OR EVENT OF FORCE MAJEURE, (ii) MISUSE, FAULT OR NEGLIGENCE OF OR BY BUYER, (iii) USE OF THE PRODUCTS IN A MANNER FOR WHICH THEY WERE NOT DESIGNED, OR (iv) IMPROPER STORAGE AND HANDLING OF THE PRODUCTS. Unless otherwise expressly stated on the Product or in the documentation accompanying the Product, the Product is intended for research only and is not to be used for any other purpose, including without limitation, unauthorized commercial uses, in vitro diagnostic uses, ex vivo or in vivo therapeutic uses, or any type of consumption by or application to human or animals.