

# CD85j (ILT2) Monoclonal Antibody (HP-F1), Alexa Fluor™ 488, eBioscience™

Product Details	
Size	100 Tests
Species Reactivity	Human
Host/Isotype	Mouse / IgG1, kappa
Recommended Isotype Control	Mouse IgG1 kappa Isotype Control (P3.6.2.8.1), Alexa Fluor™ 488, eBioscience™
Class	Monoclonal
Type	Antibody
Clone	HP-F1
Conjugate	Alexa Fluor™ 488
Excitation/Emission Max	499/520 nm
Form	Liquid
Concentration	5 µL/Test
Purification	Affinity chromatography
Storage buffer	PBS, pH 7.2, with 0.2% BSA
Contains	0.09% sodium azide
Storage conditions	4° C, store in dark, DO NOT FREEZE!
RRID	AB_2802326

Applications	Tested Dilution	Publications
Flow Cytometry (Flow)	5 µL (0.5 µg)/test	3 Publications

## Product Specific Information

**Description:** The monoclonal antibody HP-F1 recognizes CD85j, also known as ILT2, LILRB1, and LIR1. CD85j is a member of the ILT (immunoglobulin-like transcript)/LIR (leukocyte Ig-like receptor)/MIR (monocyte Ig-like receptor) family. CD85j is a single transmembrane glycoprotein with a long cytoplasmic domain containing 4 ITIMs which signal through interactions with SHP-1. Expression is found on myeloid cells (monocytes and dendritic cells) and some lymphoid cells including, subsets of NK, T and B cells. Expression has been correlated with leukemias such as ALL and CLL. Expression on CD8+ cells correlates with effector cell function and plays an important role in viral infections, including HIV, Epstein Barr and CMV. The ligands for CD85j are MHC Class I molecules such as HLA-G, A, F, B27, E and F.

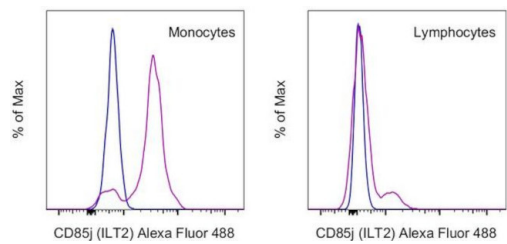
The monoclonal antibody HP-F1 has been shown to reduce the amount of CD16- dependent cytolytic activity of functional NK cells.

**Applications Reported:** This HP-F1 antibody has been reported for use in flow cytometric analysis.

**Applications Tested:** This HP-F1 antibody has been pre-diluted and tested by flow cytometric analysis of normal human peripheral blood cells. This may be used at 5 µL (0.5 µg) per test. A test is defined as the amount (µg) of antibody that will stain a cell sample in a final volume of 100 µL. Cell number should be determined empirically but can range from 10<sup>5</sup> to 10<sup>8</sup> cells /test.

Excitation: 488 nm; Emission: 519 nm; Laser: Blue Laser

Product Images For CD85j (ILT2) Monoclonal Antibody (HP-F1), Alexa Fluor™ 488, eBioscience™



**CD85j (ILT2) Antibody (53-5129-42) in Flow**  
Normal human peripheral blood cells were stained with Mouse IgG1 kappa Isotype Control, Alexa Fluor 488 (Product # 53-4714-80) (blue histogram) or CD85j (ILT2) Monoclonal Antibody, Alexa Fluor 488 (purple histogram). Cells in the monocyte (left) and lymphocyte (right) gates were used for analysis.

[View more figures on thermofisher.cn](#)

3 References

Flow Cytometry (3)

<p>Immunogenetics</p> <p><b>Natural LILRB1 D1-D2 variants show frequency differences in populations and bind to HLA class I with various avidities.</b></p> <p>"Published figure using CD85j (ILT2) monoclonal antibody (Product # 53-5129-42) in Flow Cytometry"</p> <p>Authors: Liu F,Cocker ATH,Pugh JL,Djaoud Z,Parham P,Guethlein LA</p>	<p>Year 2022</p>
<p>Signal transduction and targeted therapy</p> <p><b>Interaction between HLA-G and NK cell receptor KIR2DL4 orchestrates HER2-positive breast cancer resistance to trastuzumab.</b></p> <p>"Published figure using CD85j (ILT2) monoclonal antibody (Product # 53-5129-42) in Flow Cytometry"</p> <p>Authors: Zheng G,Guo Z,Li W,Xi W,Zuo B,Zhang R,Wen W,Yang AG,Jia L</p>	<p>Year 2021</p>

[View more Flow references on thermofisher.cn](#)

For Research Use Only. Not for use in diagnostic procedures. Not for resale without express authorization. Products are warranted to operate or perform substantially in conformance with published Product specifications in effect at the time of sale, as set forth in the Production documentation, specifications and/or accompanying package inserts ("Documentation"). No claim of suitability for use in applications regulated by FDA is made. The warranty provided herein is valid only when used by properly trained individuals. Unless otherwise stated in the Documentation, this warranty is limited to one year from date of shipment when the Product is subjected to normal, proper and intended usage. This warranty does not extend to anyone other than the Buyer. Any model or sample furnished to Buyer is merely illustrative of the general type and quality of goods and does not represent that any Product will conform to such model or sample. NO OTHER WARRANTIES, EXPRESS OR IMPLIED, ARE GRANTED INCLUDING WITHOUT LIMITATION, IMPLIED WARRANTIES OF MERCHANTABILITY, FITNESS FOR ANY PARTICULAR PURPOSE, OR NON INFRINGEMENT. BUYER'S EXCLUSIVE REMEDY FOR NON-CONFORMING PRODUCTS DURING THE WARRANTY PERIOD IS LIMITED TO REPAIR, REPLACEMENT OF OR REFUND FOR THE NON-CONFORMING PRODUCT(S) AT SELLER'S SOLE OPTION. THERE IS NO OBLIGATION TO REPAIR, REPLACE OR REFUND FOR PRODUCTS AS THE RESULT OF (I) ACCIDENT, DISASTER OR EVENT OF FORCE MAJEURE, (II) MISUSE, FAULT OR NEGLIGENCE OF OR BY BUYER, (III) USE OF THE PRODUCTS IN A MANNER FOR WHICH THEY WERE NOT DESIGNED, OR (IV) IMPROPER STORAGE AND HANDLING OF THE PRODUCTS. Unless otherwise expressly stated on the Product or in the documentation accompanying the Product, the Product is intended for research only and is not to be used for any other purpose, including without limitation, unauthorized commercial uses, in vitro diagnostic uses, ex vivo or in vivo therapeutic uses, or any type of consumption by or application to human or animals.