

# TCR beta Monoclonal Antibody (H57-597), Alexa Fluor™ 700, eBioscience™

Product Details	
Size	100 µg
Species Reactivity	Mouse
Host/Isotype	Armenian hamster / IgG
Recommended Isotype Control	Armenian Hamster IgG Isotype Control (eBio299Arm), Alexa Fluor™ 700, eBioscience™
Class	Monoclonal
Type	Antibody
Clone	H57-597
Conjugate	Alexa Fluor™ 700
Excitation/Emission Max	696/719 nm
Form	Liquid
Concentration	0.2 mg/mL
Purification	Affinity chromatography
Storage buffer	PBS, pH 7.2
Contains	0.09% sodium azide
Storage conditions	4° C, store in dark, DO NOT FREEZE!
RRID	AB_2802349

Applications	Tested Dilution	Publications
Flow Cytometry (Flow)	0.5 µg/test	5 Publications

## Product Specific Information

**Description:** The H57-597 monoclonal antibody reacts with the beta chain of mouse TCR. TCR beta is expressed by thymocytes in a developmentally regulated manner and a majority of peripheral T cells. Crosslinking of the TCR complex with H57-597 induces activation and proliferation of T cells or apoptosis based on assay conditions. H57-597 is used as a phenotypic marker for TCR beta expressing T cells.

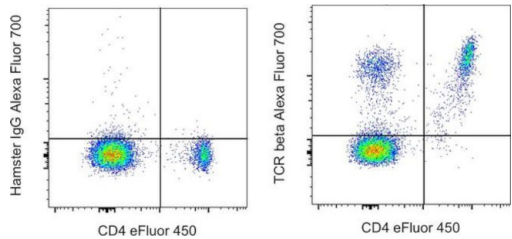
**Applications Reported:** This H57-597 antibody has been reported for use in flow cytometric analysis.

**Applications Tested:** This H57-597 antibody has been tested by flow cytometric analysis of mouse splenocytes. This may be used at less than or equal to 0.5 µg per test. A test is defined as the amount (µg) of antibody that will stain a cell sample in a final volume of 100 µL. Cell number should be determined empirically but can range from 10<sup>5</sup> to 10<sup>8</sup> cells/test. It is recommended that the antibody be carefully titrated for optimal performance in the assay of interest.

Alexa Fluor 700 emits at 723 nm and can be excited with the red laser (633-647 nm). Most instruments will require a 685 LP mirror and 710/20 band pass filter. Please make sure that your instrument is capable of detecting this fluorochrome.

Excitation: 633-647 nm; Emission: 723 nm; Laser: Red Laser

Product Images For TCR beta Monoclonal Antibody (H57-597), Alexa Fluor™ 700, eBioscience™



**TCR beta Antibody (56-5961-82) in Flow**  
C57BL/6 mouse splenocytes were stained with CD4 Monoclonal Antibody, eFluor 450 (Product # 48-0042-82) and 0.25 µg of Armenian Hamster IgG Isotype Control, Alexa Fluor 700 (Product # 56-4888-80) (left) or 0.25 µg of TCR beta Monoclonal Antibody, Alexa Fluor 700 (right). Cells in the lymphocyte gate were used for analysis.

View more figures on [thermofisher.cn](https://thermofisher.cn)

5 References

Flow Cytometry (5)

<p>The Journal of experimental medicine</p> <p><b>Niche-specific MHC II and PD-L1 regulate CD4+CD8+ intraepithelial lymphocyte differentiation.</b></p> <p>"Published figure using TCR beta monoclonal antibody (Product # 56-5961-82) in Flow Cytometry"</p> <p>Authors: Moon S, Park Y, Hyeon S, Kim YM, Kim JH, Kim H, Park S, Lee KJ, Koo BK, Ha SJ, Lee SW</p>	<p>Year 2021</p>
<p>Nature communications</p> <p><b>B7-CD28 co-stimulation modulates central tolerance via thymic clonal deletion and Treg generation through distinct mechanisms.</b></p> <p>"Published figure using TCR beta monoclonal antibody (Product # 56-5961-82) in Flow Cytometry"</p> <p>Authors: Watanabe M, Lu Y, Breen M, Hodes RJ</p>	<p>Year 2020</p>

[View more Flow references on thermofisher.cn](#)

More applications with references on [thermofisher.cn](https://thermofisher.cn)

For Research Use Only. Not for use in diagnostic procedures. Not for resale without express authorization. Products are warranted to operate or perform substantially in conformance with published Product specifications in effect at the time of sale, as set forth in the Production documentation, specifications and/or accompanying package inserts ("Documentation"). No claim of suitability for use in applications regulated by FDA is made. The warranty provided herein is valid only when used by properly trained individuals. Unless otherwise stated in the Documentation, this warranty is limited to one year from date of shipment when the Product is subjected to normal, proper and intended usage. This warranty does not extend to anyone other than the Buyer. Any model or sample furnished to Buyer is merely illustrative of the general type and quality of goods and does not represent that any Product will conform to such model or sample. NO OTHER WARRANTIES, EXPRESS OR IMPLIED, ARE GRANTED INCLUDING WITHOUT LIMITATION, IMPLIED WARRANTIES OF MERCHANTABILITY, FITNESS FOR ANY PARTICULAR PURPOSE, OR NON INFRINGEMENT. BUYER'S EXCLUSIVE REMEDY FOR NON-CONFORMING PRODUCTS DURING THE WARRANTY PERIOD IS LIMITED TO REPAIR, REPLACEMENT OF OR REFUND FOR THE NON-CONFORMING PRODUCT(S) AT SELLER'S SOLE OPTION. THERE IS NO OBLIGATION TO REPAIR, REPLACE OR REFUND FOR PRODUCTS AS THE RESULT OF (i) ACCIDENT, DISASTER OR EVENT OF FORCE MAJEURE, (ii) MISUSE, FAULT OR NEGLIGENCE OF OR BY BUYER, (iii) USE OF THE PRODUCTS IN A MANNER FOR WHICH THEY WERE NOT DESIGNED, OR (iv) IMPROPER STORAGE AND HANDLING OF THE PRODUCTS. Unless otherwise expressly stated on the Product or in the documentation accompanying the Product, the Product is intended for research only and is not to be used for any other purpose, including without limitation, unauthorized commercial uses, in vitro diagnostic uses, ex vivo or in vivo therapeutic uses, or any type of consumption by or application to human or animals.