

CD44 Monoclonal Antibody (IM7), PE-eFluor™ 610, eBioscience™

| Product Details | |
|-----------------------------|--|
| Size | 100 µg |
| Species Reactivity | Human, Mouse |
| Published Species | Fruit fly, Non-human primate, Human, Mouse |
| Host/Isotype | Rat / IgG2b, kappa |
| Recommended Isotype Control | Rat IgG2b kappa Isotype Control (eB149/10H5), PE-eFluor™ 610, eBioscience™ |
| Class | Monoclonal |
| Type | Antibody |
| Clone | IM7 |
| Conjugate | PE-eFluor™ 610 |
| Excitation/Emission Max | 565/606 nm |
| Form | Liquid |
| Concentration | 0.2 mg/mL |
| Purification | Affinity chromatography |
| Storage buffer | PBS, pH 7.2 |
| Contains | 0.09% sodium azide |
| Storage conditions | 4° C, store in dark, DO NOT FREEZE! |
| RRID | AB_2574554 |

| Applications | Tested Dilution | Publications |
|-----------------------|-----------------|------------------|
| Flow Cytometry (Flow) | 1 µg/test | 163 Publications |

Product Specific Information

Description: The IM7 monoclonal antibody reacts with all isoforms of mouse CD44 (Pgp-1). CD44 is expressed by hematopoietic and non-hematopoietic cells. Bone marrow myeloid cells and memory T cells highly express this antigen and peripheral B and T cells can upregulate the expression of CD44. CD44 functions as an adhesion molecule through its binding to hyaluronate, an extracellular matrix component.

Applications Reported: This IM7 antibody has been reported for use in flow cytometric analysis.

Applications Tested: This IM7 antibody has been tested by flow cytometric analysis of mouse splenocytes. This can be used at less than or equal to 1 µg per test. A test is defined as the amount (µg) of antibody that will stain a cell sample in a final volume of 100 µL. Cell number should be determined empirically but can range from 10⁵ to 10⁸ cells/test. It is recommended that the antibody be carefully titrated for optimal performance in the assay of interest.

PE-eFluor® 610 can be excited with laser lines from 488-561 nm and emits at 607 nm. We recommend using a 610/20 band pass filter (equivalent to PE-Texas Red®). Please make sure that your instrument is capable of detecting this fluorochrome.

Light sensitivity: This tandem dye is sensitive to photo-induced oxidation. Please protect this vial and stained samples from light.

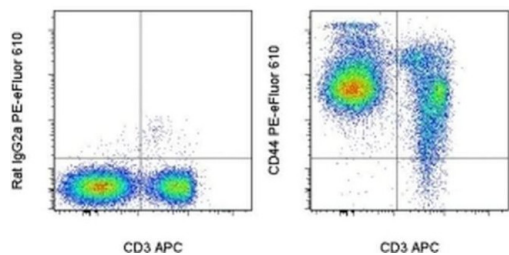
Fixation: Samples can be stored in IC Fixation Buffer (cat. 00-8222) (100 µL of cell sample + 100 µL of IC Fixation Buffer) or 1-step Fix/Lyse Solution (cat. 00-5333) for up to 3 days in the dark at 4°C with minimal impact on brightness and FRET efficiency/compensation. Some generalizations regarding fluorophore performance after fixation can be made, but clone specific

performance should be determined empirically.

Excitation: 488-561 nm; Emission: 607 nm; Laser: Blue Laser, Green Laser, Yellow-Green Laser.

Filtration: 0.2 µm post-manufacturing filtered.

Product Images For CD44 Monoclonal Antibody (IM7), PE-eFluor™ 610, eBioscience™



CD44 Antibody (61-0441-82) in Flow
Staining of C57Bl/6 splenocytes with Anti-Mouse CD3 eFluor® 450 (Product # 48-0032-82) and 0.5 µg of Rat IgG2a K Isotype Control PE-eFluor® 610 (Product # 61-4321-82) (left) or 0.5 µg of Anti-Human/Mouse CD44 PE-eFluor® 610 (right). Cells in the lymphocyte gate were used for analysis.

View more figures on thermofisher.cn

163 References

Flow Cytometry (163)

| | |
|--|----------------------|
| <p>Bioactive materials</p> <p>A platinum@polymer-catechol nanobrakr enables radio-immunotherapy for crippling melanoma tumorigenesis, angiogenesis, and radioresistance.</p> <p>"Published figure using CD44 monoclonal antibody (Product # 61-0441-82) in Flow Cytometry"</p> <p>Authors: Li W,Yan J,Tian H,Li B,Wang G,Sang W,Zhang Z,Zhang X,Dai Y</p> | <p>Year 2023</p> |
| <p>Frontiers in immunology</p> <p>TRAF6 controls T cell homeostasis by maintaining the equilibrium of MALT1 scaffolding and protease functions.</p> <p>"Published figure using CD44 monoclonal antibody (Product # 61-0441-82) in Flow Cytometry"</p> <p>Authors: O'Neill TJ,Gewies A,Seeholzer T,Krappmann D</p> | <p>Year 2023</p> |

[View more Flow references on thermofisher.cn](#)

More applications with references on thermofisher.cn

For Research Use Only. Not for use in diagnostic procedures. Not for resale without express authorization. Products are warranted to operate or perform substantially in conformance with published Product specifications in effect at the time of sale, as set forth in the Production documentation, specifications and/or accompanying package inserts ("Documentation"). No claim of suitability for use in applications regulated by FDA is made. The warranty provided herein is valid only when used by properly trained individuals. Unless otherwise stated in the Documentation, this warranty is limited to one year from date of shipment when the Product is subjected to normal, proper and intended usage. This warranty does not extend to anyone other than the Buyer. Any model or sample furnished to Buyer is merely illustrative of the general type and quality of goods and does not represent that any Product will conform to such model or sample. NO OTHER WARRANTIES, EXPRESS OR IMPLIED, ARE GRANTED INCLUDING WITHOUT LIMITATION, IMPLIED WARRANTIES OF MERCHANTABILITY, FITNESS FOR ANY PARTICULAR PURPOSE, OR NON INFRINGEMENT. BUYER'S EXCLUSIVE REMEDY FOR NON-CONFORMING PRODUCTS DURING THE WARRANTY PERIOD IS LIMITED TO REPAIR, REPLACEMENT OF OR REFUND FOR THE NON-CONFORMING PRODUCT(S) AT SELLER'S SOLE OPTION. THERE IS NO OBLIGATION TO REPAIR, REPLACE OR REFUND FOR PRODUCTS AS THE RESULT OF (I) ACCIDENT, DISASTER OR EVENT OF FORCE MAJEURE, (II) MISUSE, FAULT OR NEGLIGENCE OF OR BY BUYER, (III) USE OF THE PRODUCTS IN A MANNER FOR WHICH THEY WERE NOT DESIGNED, OR (IV) IMPROPER STORAGE AND HANDLING OF THE PRODUCTS. Unless otherwise expressly stated on the Product or in the documentation accompanying the Product, the Product is intended for research only and is not to be used for any other purpose, including without limitation, unauthorized commercial uses, in vitro diagnostic uses, ex vivo or in vivo therapeutic uses, or any type of consumption by or application to human or animals.