

# CD3e Monoclonal Antibody (145-2C11), Super Bright™ 600, eBioscience™

Product Details	
Size	100 µg
Species Reactivity	Mouse
Host/Isotype	Armenian hamster / IgG
Recommended Isotype Control	Armenian Hamster IgG Isotype Control (eBio299Arm), Super Bright™ 600, eBioscience™
Class	Monoclonal
Type	Antibody
Clone	145-2C11
Conjugate	Super Bright™ 600
Excitation/Emission Max	414/601 nm
Form	Liquid
Concentration	0.2 mg/mL
Purification	Affinity chromatography
Storage buffer	PBS, pH 7.2, with BSA
Contains	0.09% sodium azide
Storage conditions	4° C, store in dark, DO NOT FREEZE!
RRID	AB_2722961

Applications	Tested Dilution	Publications
Immunohistochemistry (IHC)	-	7 Publications
Immunocytochemistry (ICC/IF)	-	1 Publication
Flow Cytometry (Flow)	1.0 µg/test	40 Publications
ELISA (ELISA)	-	1 Publication

## Product Specific Information

**Description:** The 145-2C11 monoclonal antibody reacts with mouse CD3e, a 20 kDa subunit of the TCR complex. Along with the other CD3 subunits, gamma and delta, the epsilon chain is required for proper assembly, trafficking and surface expression of the TCR complex. CD3 is expressed by thymocytes in a developmentally regulated manner and by all mature T cells. Binding of 145-2C11 to TCR initiates the intracellular biochemical pathway resulting in cellular activation, proliferation, and apoptosis depending on specific conditions utilized. 145-2C11 is commonly used as a phenotypic marker for mouse T cells.

**Applications Reported:** This 145-2C11 antibody has been reported for use in flow cytometric analysis.

**Applications Tested:** This 145-2C11 antibody has been tested by flow cytometric analysis of mouse splenocytes. This may be used at less than or equal to 1.0 µg per test. A test is defined as the amount (µg) of antibody that will stain a cell sample in a final volume of 100 µL. Cell number should be determined empirically but can range from 10<sup>5</sup> to 10<sup>8</sup> cells/test. It is recommended that the antibody be carefully titrated for optimal performance in the assay of interest.

Super Bright 600 is a tandem dye that can be excited with the violet laser line (405 nm) and emits at 600 nm. We recommend using a 610/20 bandpass filter. Please make sure that your instrument is capable of detecting this fluorochrome.

When using two or more Super Bright dye-conjugated antibodies in a staining panel, it is recommended to use Super Bright Complete Staining Buffer (Product # SB-4401) to minimize any non-specific polymer interactions. Please refer to the datasheet for Super Bright Staining Buffer for more information.

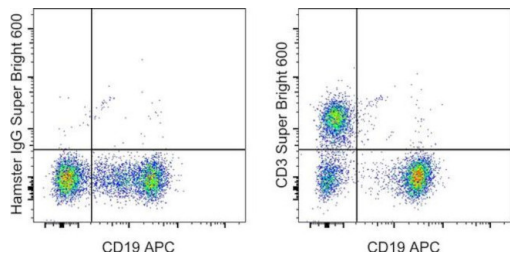
Light sensitivity: This tandem dye is sensitive to photo-induced oxidation. Please protect this vial and stained samples from light.

Fixation: Samples can be stored in IC Fixation Buffer (Product # 00-8222) (100 µL of cell sample + 100 µL of IC Fixation Buffer) or 1-step Fix/Lyse Solution (Product # 00-5333) for up to 3 days in the dark at 4°C with minimal impact on brightness and FRET efficiency/compensation. Some generalizations regarding fluorophore performance after fixation can be made, but clone specific performance should be determined empirically.

Excitation: 405 nm; Emission: 600 nm; Laser: Violet Laser

Super Bright Polymer Dyes are sold under license from Becton, Dickinson and Company.

**Product Images For CD3e Monoclonal Antibody (145-2C11), Super Bright™ 600, eBioscience™**



**CD3e Antibody (63-0031-82) in Flow**

Swiss Webster mouse splenocytes were stained with CD19 Monoclonal Antibody, APC (Product # 17-0193-82) and 1.0 µg of Armenian Hamster IgG Isotype Control, Super Bright 600 (Product # 63-4888-82) (left) or 1.0 µg of CD3 Monoclonal Antibody, Super Bright 600 (right). Cells in the lymphocyte gate were used for analysis.

**View more figures on [thermofisher.cn](http://thermofisher.cn)**

Immunohistochemistry (7)

<p>Frontiers in pharmacology</p> <p><b>Pomegranate Peel Extract Decreases Plaque Necrosis and Advanced Atherosclerosis Progression in Apoe Mice.</b></p> <p>"Published figure using CD3e monoclonal antibody (Product # 63-0031-82) in Immunohistochemistry"</p> <p>Authors: Manickam V,Dhawan UK,Singh D,Gupta M,Subramanian M</p>	<p>Year</p> <p>2022</p>
<p>Cell reports</p> <p><b>Btla signaling in conventional and regulatory lymphocytes coordinately tempers humoral immunity in the intestinal mucosa.</b></p> <p>"Published figure using CD3e monoclonal antibody (Product # 63-0031-82) in Immunohistochemistry"</p> <p>Authors: Stienne C,Virgen-Slane R,Elmén L,Veny M,Huang S,Nguyen J,Chappell E,Balmert MO,Shui JW,Hurchla MA,Kronenberg M,Peterson SN,Murphy KM,Ware CF,Šedý JR</p>	<p>Year</p> <p>2022</p>

[View more IHC references on thermofisher.cn](#)

Immunocytochemistry (1)

<p>Frontiers in immunology</p> <p><b>Optimization of Organotypic Cultures of Mouse Spleen for Staining and Functional Assays.</b></p> <p>"Published figure using CD3e monoclonal antibody (Product # 63-0031-82) in Immunocytochemistry"</p> <p>Authors: Finetti F,Capitani N,Manganaro N,Tatangelo V,Libonati F,Panattoni G,Calaresu I,Ballerini L,Baldari CT, Patrussi L</p>	<p>Year</p> <p>2021</p>
--	-------------------------

Flow Cytometry (40)

<p>Immunity, inflammation and disease</p> <p><b>NCR negative group 3 innate lymphoid cell (NCR<sup>+</sup> ILC3) participates in abnormal pathology of lung in cigarette smoking-induced COPD mice.</b></p> <p>"Published figure using CD3e monoclonal antibody (Product # 63-0031-82) in Flow Cytometry"</p> <p>Authors: Chu S,Ma L,Yang X,Xiao B,Liang Y,Zheng S,Li L</p>	<p>Year</p> <p>2023</p>
---	-------------------------

[View more Flow references on thermofisher.cn](#)

More applications with references on thermofisher.cn

ELISA (1)

For Research Use Only. Not for use in diagnostic procedures. Not for resale without express authorization. Products are warranted to operate or perform substantially in conformance with published Product specifications in effect at the time of sale, as set forth in the Production documentation, specifications and/or accompanying package inserts ("Documentation"). No claim of suitability for use in applications regulated by FDA is made. The warranty provided herein is valid only when used by properly trained individuals. Unless otherwise stated in the Documentation, this warranty is limited to one year from date of shipment when the Product is subjected to normal, proper and intended usage. This warranty does not extend to anyone other than the Buyer. Any model or sample furnished to Buyer is merely illustrative of the general type and quality of goods and does not represent that any Product will conform to such model or sample. NO OTHER WARRANTIES, EXPRESS OR IMPLIED, ARE GRANTED INCLUDING WITHOUT LIMITATION, IMPLIED WARRANTIES OF MERCHANTABILITY, FITNESS FOR ANY PARTICULAR PURPOSE, OR NON-INFRINGEMENT. BUYER'S EXCLUSIVE REMEDY FOR NON-CONFORMING PRODUCTS DURING THE WARRANTY PERIOD IS LIMITED TO REPAIR, REPLACEMENT OF OR REFUND FOR THE NON-CONFORMING PRODUCT(S) AT SELLER'S SOLE OPTION. THERE IS NO OBLIGATION TO REPAIR, REPLACE OR REFUND FOR PRODUCTS AS THE RESULT OF (I) ACCIDENT, DISASTER OR EVENT OF FORCE MAJEURE, (II) MISUSE, FAULT OR NEGLIGENCE OF OR BY BUYER, (III) USE OF THE PRODUCTS IN A MANNER FOR WHICH THEY WERE NOT DESIGNED, OR (IV) IMPROPER STORAGE AND HANDLING OF THE PRODUCTS. Unless otherwise expressly stated on the Product or in the documentation accompanying the Product, the Product is intended for research only and is not to be used for any other purpose, including without limitation, unauthorized commercial uses, in vitro diagnostic uses, ex vivo or in vivo therapeutic uses, or any type of consumption by or application to human or animals.