

# XBP1 Recombinant Polyclonal Antibody

## Product Details

Size	100 µg
Species Reactivity	Human
Host/Isotype	Rabbit / IgG
Expression system	Expi293
Class	Recombinant Polyclonal
Type	Antibody
Conjugate	Unconjugated
Immunogen	Protein corresponding to human XBP1 (aa1-aa185)
Form	Liquid
Concentration	0.5 mg/mL
Purification	Protein A
Storage buffer	PBS, pH 7.4
Contains	0.09% sodium azide
Storage conditions	Store at 4°C short term. For long term storage, store at -20°C, avoiding freeze/thaw cycles.
RRID	AB_2716901

## Applications

## Tested Dilution

## Publications

Immunocytochemistry (ICC/IF)

5 µg/mL

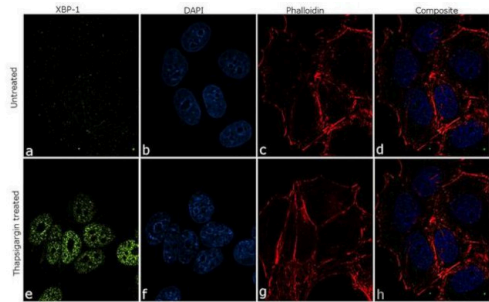
-

## Product Specific Information

This antibody is predicted to react with Monkey, Pig, Bovine, Mouse

Recombinant rabbit polyclonal antibodies are unique offerings from Thermo Fisher Scientific. They are comprised of a selection of multiple different recombinant monoclonal antibodies, providing the best of both worlds - the sensitivity of polyclonal antibodies with the specificity of monoclonal antibodies - all delivered with the consistency only found in a recombinant antibody. While functionally the same as a polyclonal antibody - recognizing multiple epitope sites on the target and producing higher detection sensitivity for low abundance targets - a recombinant rabbit polyclonal antibody has a known mixture of light and heavy chains. The exact population can be produced in every lot, circumventing the biological variability typically associated with polyclonal antibody production.

Product Images For XBP1 Recombinant Polyclonal Antibody

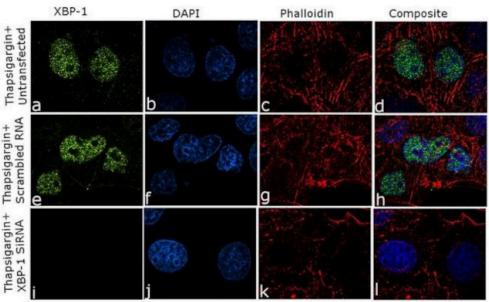


XBP1 Antibody (711490) in ICC/IF

For immunofluorescence analysis, MCF7 cells were fixed and permeabilized for detection of endogenous XBP1 using Anti-XBP1 Recombinant Rabbit Polyclonal Antibody (Product # 711490, 5 µg/mL) and labeled with Goat anti-Rabbit IgG (Heavy Chain) Superclonal™ Secondary Antibody, Alexa Fluor® 488 conjugate (Product # A27034, 1:2000). Nuclei (blue) is stained using SlowFade® Gold Antifade Mountant with DAPI (Product # S36938) and cytoskeletal F-actin (red) staining using Rhodamine Phalloidin (Product # R415, 1:300). Panel a-d) shows untreated cells that were stained for detection and localization of XBP1 protein (green) with no signal. Panel e-h) clearly demonstrate nuclear localisation of XBP1 in cells treated with Thapsigargin (300 nM 3h). The images were captured at 60X magnification.

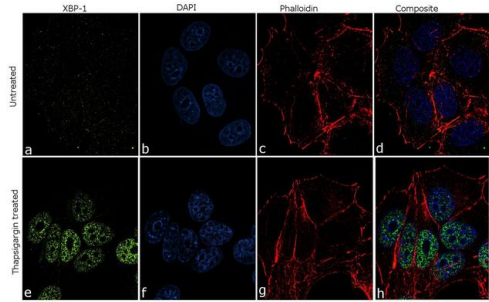
XBP1 Antibody (711490)

Knockdown of XBP-1 was achieved by transfecting Thapsigargin (300 nM 3h) treated MCF7 cells with XBP-1 specific siRNA (Silencer® select Cat # s14914 , s14915). Immunofluorescence analysis was performed on Thapsigargin treated MCF7 cells (untransfected, panel a-d), transfected with XBP-1 specific siRNA (panel i-l) or non-specific scrambled siRNA (panels e-h). Cells were fixed, permeabilized, and labelled with Anti-XBP1 Recombinant Rabbit Polyclonal Antibody (Product # 711490, 5 µg/mL), followed by Goat anti-Rabbit IgG (Heavy Chain) Superclonal™ Secondary Antibody, Alexa Fluor® 488 conjugate (Product # A27034, 1:2000). Nuclei (blue) were stained using SlowFade® Gold Antifade Mountant with DAPI (Product # S36938), and Rhodamine Phalloidin (Product # R415, 1:300) was used for cytoskeletal F-actin (red) staining. Loss of signal was observed upon siRNA mediated knockdown (panel i-l) confirming specificity of the antibody to XBP-1 (green). The images were captured at 60X magnification. {KD}



XBP1 Antibody (711490)

Detection of subcellular localization of the target protein by cell treatment demonstrates antibody specificity. Immunofluorescence analysis of XBP-1 using Anti-XBP-1 Recombinant Rabbit Polyclonal Antibody (Product # 711490) detects XBP1 in nucleus of MCF7 cells treated with Thapsigargin. {TM}



For Research Use Only. Not for use in diagnostic procedures. Not for resale without express authorization. Products are warranted to operate or perform substantially in conformance with published Product specifications in effect at the time of sale, as set forth in the Production documentation, specifications and/or accompanying package inserts ("Documentation"). No claim of suitability for use in applications regulated by FDA is made. The warranty provided herein is valid only when used by properly trained individuals. Unless otherwise stated in the Documentation, this warranty is limited to one year from date of shipment when the Product is subjected to normal, proper and intended usage. This warranty does not extend to anyone other than the Buyer. Any model or sample furnished to Buyer is merely illustrative of the general type and quality of goods and does not represent that any Product will conform to such model or sample. NO OTHER WARRANTIES, EXPRESS OR IMPLIED, ARE GRANTED INCLUDING WITHOUT LIMITATION, IMPLIED WARRANTIES OF MERCHANTABILITY, FITNESS FOR ANY PARTICULAR PURPOSE, OR NON INFRINGEMENT. BUYER'S EXCLUSIVE REMEDY FOR NON-CONFORMING PRODUCTS DURING THE WARRANTY PERIOD IS LIMITED TO REPAIR, REPLACEMENT OF OR REFUND FOR THE NON-CONFORMING PRODUCT(S) AT SELLER'S SOLE OPTION. THERE IS NO OBLIGATION TO REPAIR, REPLACE OR REFUND FOR PRODUCTS AS THE RESULT OF (I) ACCIDENT, DISASTER OR EVENT OF FORCE MAJEURE, (II) MISUSE, FAULT OR NEGLIGENCE OF OR BY BUYER, (III) USE OF THE PRODUCTS IN A MANNER FOR WHICH THEY WERE NOT DESIGNED, OR (IV) IMPROPER STORAGE AND HANDLING OF THE PRODUCTS. Unless otherwise expressly stated on the Product or in the documentation accompanying the Product, the Product is intended for research only and is not to be used for any other purpose, including without limitation, unauthorized commercial uses, in vitro diagnostic uses, ex vivo or in vivo therapeutic uses, or any type of consumption by or application to human or animals.