

ING2 Recombinant Polyclonal Antibody (2HCLC)

| Product Details | |
|--------------------|--|
| Size | 100 µg |
| Species Reactivity | Human |
| Host/Isotype | Rabbit / IgG |
| Expression system | Expi293 |
| Class | Recombinant Polyclonal |
| Type | Antibody |
| Clone | 2HCLC |
| Conjugate | Unconjugated |
| Immunogen | Protein corresponding to human ING2 [aa1-aa280] |
| Form | Liquid |
| Concentration | 0.5 mg/mL |
| Purification | Protein A |
| Storage buffer | PBS, pH 7.4 |
| Contains | 0.09% sodium azide |
| Storage conditions | Store at 4°C short term. For long term storage, store at -20°C, avoiding freeze/thaw cycles. |
| RRID | AB_2724521 |

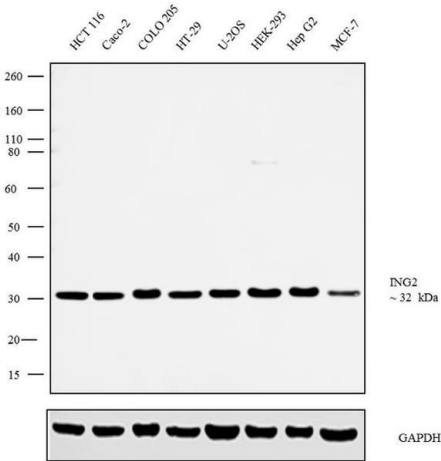
| Applications | Tested Dilution | Publications |
|-------------------|-----------------|--------------|
| Western Blot (WB) | 1:200 | - |

Product Specific Information

This antibody is predicted to react with Monkey, Pig, Cat, Dog.

Recombinant rabbit polyclonal antibodies are unique offerings from Thermo Fisher Scientific. They are comprised of a selection of multiple different recombinant monoclonal antibodies, providing the best of both worlds - the sensitivity of polyclonal antibodies with the specificity of monoclonal antibodies - all delivered with the consistency only found in a recombinant antibody. While functionally the same as a polyclonal antibody - recognizing multiple epitope sites on the target and producing higher detection sensitivity for low abundance targets - a recombinant rabbit polyclonal antibody has a known mixture of light and heavy chains. The exact population can be produced in every lot, circumventing the biological variability typically associated with polyclonal antibody production.

Product Images For ING2 Recombinant Polyclonal Antibody (2HCLC)



ING2 Antibody (711779) in WB

Western blot analysis was performed on whole cell extracts (30 µg lysate) of HCT 116 (Lane 1), Caco-2 (Lane 2), COLO 205 (Lane 3), HT-29 (Lane 4), U-2 OS (Lane 5), HEK-293 (Lane 6), Hep G2 (Lane 7) and MCF-7 (Lane 8). The blots were probed with Anti-ING2 Recombinant Rabbit Polyclonal Antibody (Product # 711779, 1:200 dilution) and detected by chemiluminescence using Goat anti-Rabbit IgG (Heavy Chain) Superclonal™ Secondary Antibody, HRP conjugate (Product # A27036, 0.25 µg/mL, 1:4000 dilution). A 32 kDa band corresponding to ING2 was observed across the cell lines tested.

ING2 Antibody (711779)

Antibody specificity was demonstrated by siRNA mediated knockdown of target protein. MCF-7 cells were transfected with ING2 siRNA and decrease in signal intensity was observed in Western blot application using Anti-ING2 Recombinant Rabbit Polyclonal Antibody (Product # 711779). {KD}

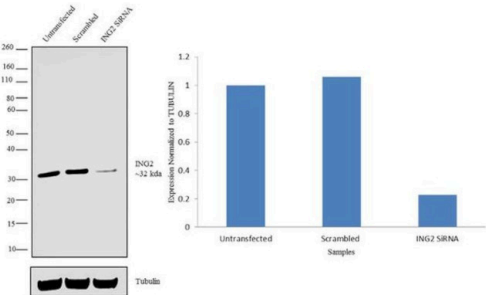


Fig (a)

Fig (b)

ING2 Antibody (711779) in WB

Knockdown of ING2 was achieved by transfecting MCF7 cells with ING2 specific siRNA (Silencer® select Product # s7433 and Product # s7432). Western blot analysis (Fig a) was performed using whole cell extracts from the MCF-7 knockdown cells (Lane 3), non-specific scrambled siRNA transfected cells (Lane 2) and untransfected cells (Lane 1). The blots were probed with Anti-ING2 Recombinant Rabbit Polyclonal Antibody (Product # 711779, 1:200 dilution) and Goat anti-Rabbit IgG (Heavy Chain) Superclonal™ Secondary Antibody, HRP conjugate (Product # A27036, 0.25 µg/mL, 1:4000 dilution). Densitometric analysis of this Western blot is shown in histogram (Fig b). Loss of signal upon siRNA mediated knock down confirms that antibody is specific to ING2.

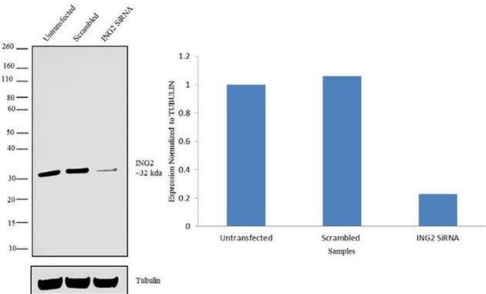


Fig (a)

Fig (b)

For Research Use Only. Not for use in diagnostic procedures. Not for resale without express authorization. Products are warranted to operate or perform substantially in conformance with published Product specifications in effect at the time of sale, as set forth in the Production documentation, specifications and/or accompanying package inserts ("Documentation"). No claim of suitability for use in applications regulated by FDA is made. The warranty provided herein is valid only when used by properly trained individuals. Unless otherwise stated in the Documentation, this warranty is limited to one year from date of shipment when the Product is subjected to normal, proper and intended usage. This warranty does not extend to anyone other than the Buyer. Any model or sample furnished to Buyer is merely illustrative of the general type and quality of goods and does not represent that any Product will conform to such model or sample. NO OTHER WARRANTIES, EXPRESS OR IMPLIED, ARE GRANTED INCLUDING WITHOUT LIMITATION, IMPLIED WARRANTIES OF MERCHANTABILITY, FITNESS FOR ANY PARTICULAR PURPOSE, OR NON INFRINGEMENT. BUYER'S EXCLUSIVE REMEDY FOR NON-CONFORMING PRODUCTS DURING THE WARRANTY PERIOD IS LIMITED TO REPAIR, REPLACEMENT OF OR REFUND FOR THE NON-CONFORMING PRODUCT(S) AT SELLER'S SOLE OPTION. THERE IS NO OBLIGATION TO REPAIR, REPLACE OR REFUND FOR PRODUCTS AS THE RESULT OF (I) ACCIDENT, DISASTER OR EVENT OF FORCE MAJEURE, (II) MISUSE, FAULT OR NEGLIGENCE OF OR BY BUYER, (III) USE OF THE PRODUCTS IN A MANNER FOR WHICH THEY WERE NOT DESIGNED, OR (IV) IMPROPER STORAGE AND HANDLING OF THE PRODUCTS. Unless otherwise expressly stated on the Product or in the documentation accompanying the Product, the Product is intended for research only and is not to be used for any other purpose, including without limitation, unauthorized commercial uses, in vitro diagnostic uses, ex vivo or in vivo therapeutic uses, or any type of consumption by or application to human or animals.