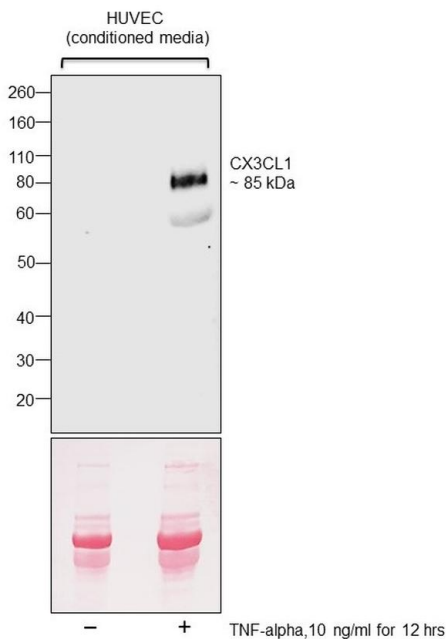


CX3CL1 Monoclonal Antibody (4C5)

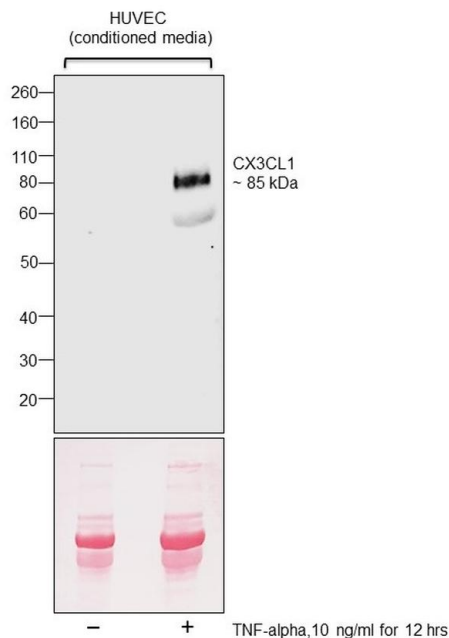
Product Details	
Size	100 µg
Species Reactivity	Human, Mouse
Host/Isotype	Mouse / IgG
Class	Monoclonal
Type	Antibody
Clone	4C5
Conjugate	Unconjugated
Immunogen	Non-glycosylated, polypeptide chain containing 76 amino acids of chemokine domain expressed in E. coli.
Form	Liquid
Concentration	1 mg/mL
Purification	Protein G
Storage buffer	PBS with 1mg/mL BSA, 50% glycerol
Contains	0.05% sodium azide
Storage conditions	-20° C, Avoid Freeze/Thaw Cycles
RRID	AB_2536715

Applications	Tested Dilution	Publications
Western Blot (WB)	1:1,000	-
ELISA (ELISA)	Assay-dependent	-

Product Images For CX3CL1 Monoclonal Antibody (4C5)

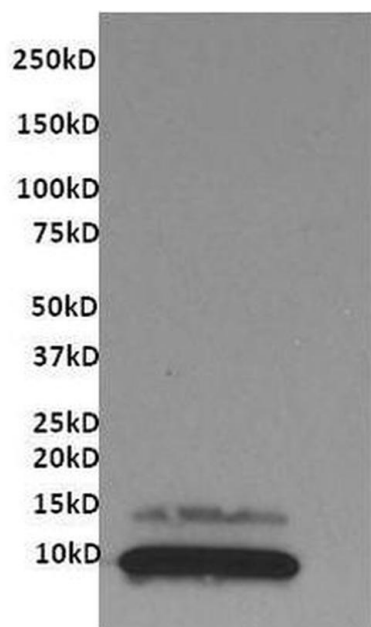


CX3CL1 Antibody (MA1-031)
Altered expression of proteins upon cell treatment demonstrates antibody specificity. Western blot using CX3CL1 Monoclonal Antibody (4C5) (Product # MA1-031), cell treatment shows upregulation in the cleaved soluble fragment of CX3CL1 detected in HUVEC cells. {TM}



CX3CL1 Antibody (MA1-031) in WB

Western blot was performed using Anti-CX3CL1 Monoclonal Antibody (4C5) (Product # MA1-031) and a 85 kDa band corresponding to soluble cleaved fragment of CX3CL1 was observed across tested cell line. Conditioned media (20 µg µg lysate) of HUVEC (Lane 1), HUVEC treated with TNF-alpha, 10 ng/mL for 12 hrs (Lane 2) were electrophoresed using NuPAGE™ 4-12% Bis-Tris Protein Gel (Product # NP0321BOX). Resolved proteins were then transferred onto a nitrocellulose membrane (Product # IB23001) by iBlot® 2 Dry Blotting System (Product # IB21001). The blot was probed with the primary antibody (1:1000 dilution) and detected by chemiluminescence with Goat anti-Mouse IgG (H+L) Superclonal™ Recombinant Secondary Antibody, HRP (Product # A28177, 1:4000 dilution) using the iBright FL 1000 (Product # A32752). Chemiluminescent detection was performed using SuperSignal™ West Dura Extended Duration Substrate (Product # 34076).



CX3CL1 Antibody (MA1-031) in WB

Western blot analysis of Human Fractalkine was performed by loading 0.25 µg of recombinant human Fractalkine onto a 4-20% Tris-HCl polyacrylamide gel. Protein was transferred to a PVDF membrane and blocked with 5% Milk/TBST for at least 1 hour. Membrane was probed with a human Fractalkine monoclonal antibody (Product # MA1-031) at a dilution of 1:1000 overnight at 4°C on a rocking platform. Membranes were washed in TBS-0.1% Tween-20 and probed with a goat anti-rabbit-HRP secondary antibody (Product # 31430) at a dilution of 1:10,000 for at least one hour. Membrane was washed and chemiluminescent detection performed using Super Signal West Dura (Product # 34075).

[View more figures on thermofisher.cn](http://thermofisher.cn)

For Research Use Only. Not for use in diagnostic procedures. Not for resale without express authorization. Products are warranted to operate or perform substantially in conformance with published Product specifications in effect at the time of sale, as set forth in the Production documentation, specifications and/or accompanying package inserts ("Documentation"). No claim of suitability for use in applications regulated by FDA is made. The warranty provided herein is valid only when used by properly trained individuals. Unless otherwise stated in the Documentation, this warranty is limited to one year from date of shipment when the Product is subjected to normal, proper and intended usage. This warranty does not extend to anyone other than the Buyer. Any model or sample furnished to Buyer is merely illustrative of the general type and quality of goods and does not represent that any Product will conform to such model or sample. NO OTHER WARRANTIES, EXPRESS OR IMPLIED, ARE GRANTED INCLUDING WITHOUT LIMITATION, IMPLIED WARRANTIES OF MERCHANTABILITY, FITNESS FOR ANY PARTICULAR PURPOSE, OR NON-INFRINGEMENT. BUYER'S EXCLUSIVE REMEDY FOR NON-CONFORMING PRODUCTS DURING THE WARRANTY PERIOD IS LIMITED TO REPAIR, REPLACEMENT OF OR REFUND FOR THE NON-CONFORMING PRODUCT(S) AT SELLER'S SOLE OPTION. THERE IS NO OBLIGATION TO REPAIR, REPLACE OR REFUND FOR PRODUCTS AS THE RESULT OF (i) ACCIDENT, DISASTER OR EVENT OF FORCE MAJEURE, (ii) MISUSE, FAULT OR NEGLIGENCE OF OR BY BUYER, (iii) USE OF THE PRODUCTS IN A MANNER FOR WHICH THEY WERE NOT DESIGNED, OR (iv) IMPROPER STORAGE AND HANDLING OF THE PRODUCTS. Unless otherwise expressly stated on the Product or in the documentation accompanying the Product, the Product is intended for research only and is not to be used for any other purpose, including without limitation, unauthorized commercial uses, in vitro diagnostic uses, ex vivo or in vivo therapeutic uses, or any type of consumption by or application to human or animals.