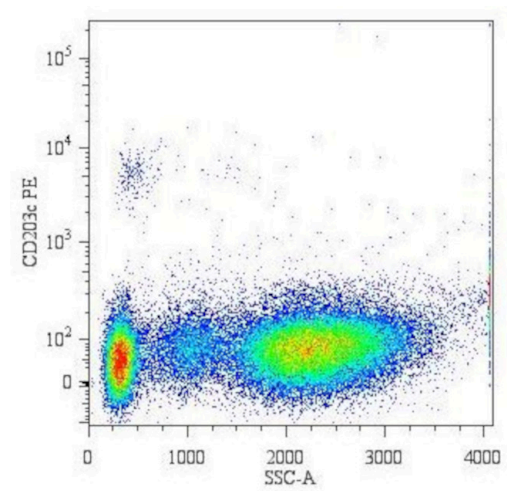


CD203c Monoclonal Antibody (NP4D6), PE

Product Details	
Size	100 Tests
Species Reactivity	Human
Published Species	Human
Host/Isotype	Mouse / IgG1
Class	Monoclonal
Type	Antibody
Clone	NP4D6
Conjugate	PE
Excitation/Emission Max	565/576 nm
Immunogen	HEK-293 cells transfected with human CD203c
Form	Liquid
Purification	Size-exclusion chromatography
Storage buffer	PBS, pH 7.4, with 0.2% BSA
Contains	15mM sodium azide
Storage conditions	4° C, store in dark, DO NOT FREEZE!
RRID	AB_11154570

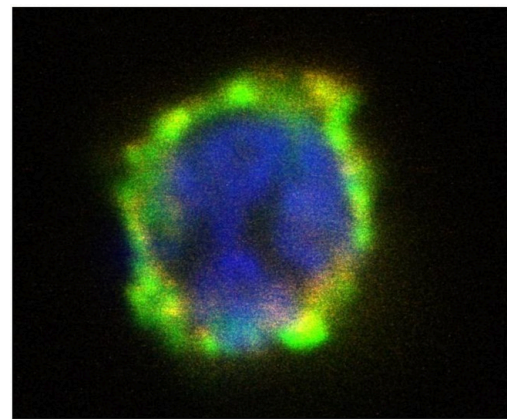
Applications	Tested Dilution	Publications
Immunocytochemistry (ICC/IF)	Assay-dependent	-
Flow Cytometry (Flow)	20 µL/1x10^6 cells	1 Publication

Product Images For CD203c Monoclonal Antibody (NP4D6), PE



CD203c Antibody (MA1-10139) in Flow

Flow cytometry analysis (surface staining) of human basophils in allergen-stimulated whole blood (CD203cpos/ SSClow) by anti-CD203c antibody (NP4D6) Monoclonal antibody (Product # MA1-10139).



CD203c Antibody (MA1-10139) in ICC/IF

Immunocytochemistry analysis of activated human basophil by FITC-conjugated anti-CD63 (clone MEM-259, green) and PE-conjugated anti-CD203c (clone NP4D6, red) Monoclonal antibody (Product # MA1-10139); merged signal yellow. DNA visualized by DAPI (blue).

1 Reference

Flow Cytometry (1)

Clinical and experimental allergy : journal of the British Society for Allergy and Clinical Immunology	Year 2017
Human basophils are a source of - and are differentially activated by - IL-31.	Species Human
"MA110139 was used in flow cytometry to assess the functional role of IL-31 in basophil biology"	
Authors: Raap U,Gehring M,Kleiner S,Rüdrich U,Eiz-Vesper B,Haas H,Kapp A,Gibbs BF	

For Research Use Only. Not for use in diagnostic procedures. Not for resale without express authorization. Products are warranted to operate or perform substantially in conformance with published Product specifications in effect at the time of sale, as set forth in the Production documentation, specifications and/or accompanying package inserts ("Documentation"). No claim of suitability for use in applications regulated by FDA is made. The warranty provided herein is valid only when used by properly trained individuals. Unless otherwise stated in the Documentation, this warranty is limited to one year from date of shipment when the Product is subjected to normal, proper and intended usage. This warranty does not extend to anyone other than the Buyer. Any model or sample furnished to Buyer is merely illustrative of the general type and quality of goods and does not represent that any Product will conform to such model or sample. NO OTHER WARRANTIES, EXPRESS OR IMPLIED, ARE GRANTED INCLUDING WITHOUT LIMITATION, IMPLIED WARRANTIES OF MERCHANTABILITY, FITNESS FOR ANY PARTICULAR PURPOSE, OR NON INFRINGEMENT. BUYER'S EXCLUSIVE REMEDY FOR NON-CONFORMING PRODUCTS DURING THE WARRANTY PERIOD IS LIMITED TO REPAIR, REPLACEMENT OF OR REFUND FOR THE NON-CONFORMING PRODUCT(S) AT SELLER'S SOLE OPTION. THERE IS NO OBLIGATION TO REPAIR, REPLACE OR REFUND FOR PRODUCTS AS THE RESULT OF (I) ACCIDENT, DISASTER OR EVENT OF FORCE MAJEURE, (II) MISUSE, FAULT OR NEGLIGENCE OF OR BY BUYER, (III) USE OF THE PRODUCTS IN A MANNER FOR WHICH THEY WERE NOT DESIGNED, OR (IV) IMPROPER STORAGE AND HANDLING OF THE PRODUCTS. Unless otherwise expressly stated on the Product or in the documentation accompanying the Product, the Product is intended for research only and is not to be used for any other purpose, including without limitation, unauthorized commercial uses, in vitro diagnostic uses, ex vivo or in vivo therapeutic uses, or any type of consumption by or application to human or animals.