

HSP90 beta Monoclonal Antibody (MBH90B)

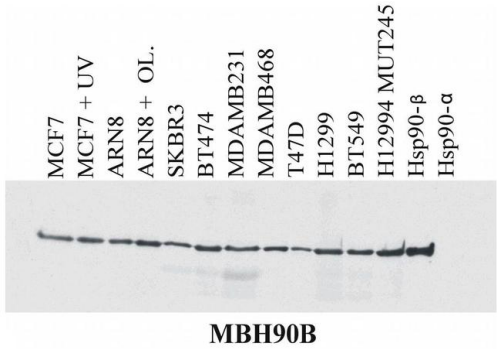
Product Details	
Size	100 µg
Species Reactivity	Bovine, Human, Mouse
Published Species	Human
Host/Isotype	Mouse / IgG1
Class	Monoclonal
Type	Antibody
Clone	MBH90B
Conjugate	Unconjugated
Immunogen	Peptide corresponding to the EEVHHGEEEEVEC sequence within N-terminal part of human Hsp90.
Form	Liquid
Concentration	1 mg/mL
Purification	Protein A
Storage buffer	PBS, pH 7.4, with 0.2% BSA
Contains	15mM sodium azide
Storage conditions	4° C, do not freeze
RRID	AB_11153425

Applications	Tested Dilution	Publications
Western Blot (WB)	1 µg/mL	3 Publications
Immunocytochemistry (ICC/IF)	1 µg/mL	-
Immunoprecipitation (IP)	1 µg/mL	-

Product Specific Information

This antibody recognizes the EEVHHG epitope within the N-terminal part of Hsp90 beta, a ubiquitously expressed protein with calculated MW of 83.3 kDa which migrates, however, as a 90 kDa band under reducing SDS-PAGE conditions.

Product Images For HSP90 beta Monoclonal Antibody (MBH90B)

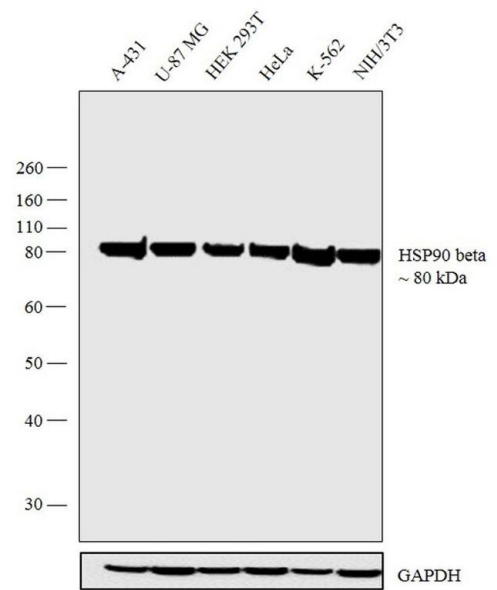


HSP90 beta Antibody (MA1-10373) in WB

Western blotting analysis of MBH90B Monoclonal antibody (Product # MA1-10373) reactivity with MCF-7, ARN8, SK-BR-3, T-474, MDA-MB-231, MDA-MB-468, T-47D, H1299, BT-549, and H12994 cell lines and recombinant Hsp90 alpha and Hsp90 beta protein.

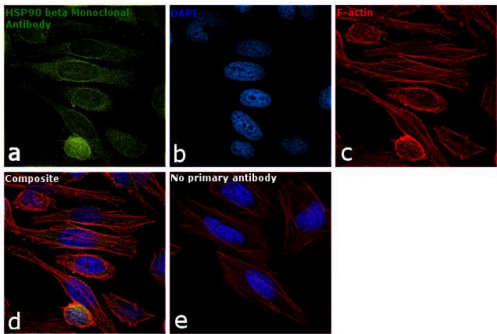
HSP90 beta Antibody (MA1-10373) in WB

Western blot analysis was performed on whole cell extracts (30 µg lysate) of A-431 (Lane 1), U-87 MG (Lane 2), HEK 293T (Lane 3), HeLa (Lane 4), K-562 (Lane 5) and NIH/3T3 (Lane 6). The blot was probed with Anti-HSP90 beta Monoclonal Antibody (MBH90B) (Product # MA1-10373, 1 µg/ml dilution) and detected by chemiluminescence using Goat anti-Mouse IgG (H+L) Superclonal™ Secondary Antibody, HRP conjugate (Product # A28177, 0.25 µg/ml, 1:4000 dilution). A 80 kDa band corresponding to HSP90 beta was observed across the cell lines tested.



HSP90 beta Antibody (MA1-10373) in ICC/IF

Immunofluorescence analysis of HSP90 beta was performed using 70% confluent log phase HeLa cells. The cells were fixed with 4% paraformaldehyde for 10 minutes, permeabilized with 0.1% Triton™ X-100 for 15 minutes, and blocked with 1% BSA for 1 hour at room temperature. The cells were labeled with HSP90 beta Monoclonal Antibody (MBH90B) (Product # MA1-10373) at 1 µg/mL in 0.1% BSA, incubated at 4 degree Celsius overnight and then labeled with Goat anti-Rabbit IgG (Heavy Chain) Superclonal™ Secondary Antibody, Alexa Fluor® 488 conjugate (Product # A27034) at a dilution of 1:2000 for 45 minutes at room temperature (Panel a: green). Nuclei (Panel b: blue) were stained with SlowFade® Gold Antifade Mountant with DAPI (Product # S36938). F-actin (Panel c: red) was stained with Rhodamine Phalloidin (Product # R415, 1:300). Panel d represents the merged image showing cytoplasmic localization. Panel e represents control cells with no primary antibody to assess background. The images were captured at 60X magnification.



View more figures on thermofisher.cn

Western Blot (3)

<p>Genes</p> <p>Differential Regulation of Telomeric Complex by <i>BCR-ABL1</i> Kinase in Human Cellular Models of Chronic Myeloid Leukemia-From Single Cell Analysis to Next-Generation Sequencing.</p> <p>"Published figure using HSP90 beta monoclonal antibody (Product # MA1-10373) in Western Blot"</p> <p>Authors: Deregowska A,Pepek M,Pruszczyk K,Machnicki MM,Wnuk M,Stoklosa T</p>	<p>Year</p> <p>2020</p> <p>Species</p> <p>Human</p> <p>Dilution</p> <p>1:1000</p>
<p>Aging</p> <p>Remifentanyl preconditioning protects against hypoxia-induced senescence and necroptosis in human cardiac myocytes <i>in vitro</i>.</p> <p>"MA1-10373 was used in Western Blotting to investigate remifentanyl preconditioning-based adaptive responses and underlying mechanisms using a model of human cardiomyocytes treated with the hypoxia-mimetic agent cobalt chloride."</p> <p>Authors: Lewinska A,Adamczyk-Grochala J,Bloniarz D,Horeczy B,Zurek S,Kurowicki A,Woloszczuk-Gebicka B,Widenka K,Wnuk M</p>	<p>Year</p> <p>2020</p> <p>Species</p> <p>Human</p> <p>Dilution</p> <p>1:1000</p>

[View more WB references on thermofisher.cn](#)

For Research Use Only. Not for use in diagnostic procedures. Not for resale without express authorization. Products are warranted to operate or perform substantially in conformance with published Product specifications in effect at the time of sale, as set forth in the Production documentation, specifications and/or accompanying package inserts ("Documentation"). No claim of suitability for use in applications regulated by FDA is made. The warranty provided herein is valid only when used by properly trained individuals. Unless otherwise stated in the Documentation, this warranty is limited to one year from date of shipment when the Product is subjected to normal, proper and intended usage. This warranty does not extend to anyone other than the Buyer. Any model or sample furnished to Buyer is merely illustrative of the general type and quality of goods and does not represent that any Product will conform to such model or sample. NO OTHER WARRANTIES, EXPRESS OR IMPLIED, ARE GRANTED INCLUDING WITHOUT LIMITATION, IMPLIED WARRANTIES OF MERCHANTABILITY, FITNESS FOR ANY PARTICULAR PURPOSE, OR NON INFRINGEMENT. BUYER'S EXCLUSIVE REMEDY FOR NON-CONFORMING PRODUCTS DURING THE WARRANTY PERIOD IS LIMITED TO REPAIR, REPLACEMENT OF OR REFUND FOR THE NON-CONFORMING PRODUCT(S) AT SELLER'S SOLE OPTION. THERE IS NO OBLIGATION TO REPAIR, REPLACE OR REFUND FOR PRODUCTS AS THE RESULT OF (I) ACCIDENT, DISASTER OR EVENT OF FORCE MAJEURE, (II) MISUSE, FAULT OR NEGLIGENCE OF OR BY BUYER, (III) USE OF THE PRODUCTS IN A MANNER FOR WHICH THEY WERE NOT DESIGNED, OR (IV) IMPROPER STORAGE AND HANDLING OF THE PRODUCTS. Unless otherwise expressly stated on the Product or in the documentation accompanying the Product, the Product is intended for research only and is not to be used for any other purpose, including without limitation, unauthorized commercial uses, in vitro diagnostic uses, ex vivo or in vivo therapeutic uses, or any type of consumption by or application to human or animals.