

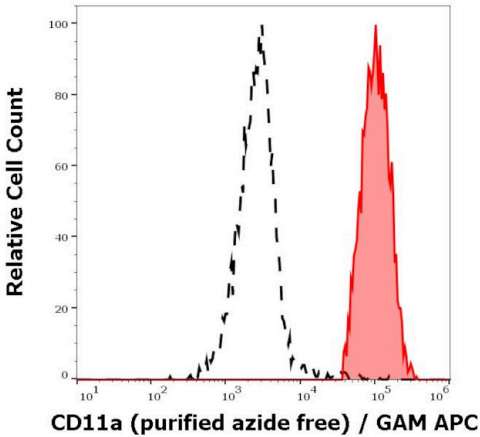
# CD11a Monoclonal Antibody (MEM-25)

Product Details	
Size	100 µg
Species Reactivity	Human
Published Species	Human
Host/Isotype	Mouse / IgG1
Class	Monoclonal
Type	Antibody
Clone	MEM-25
Conjugate	Unconjugated
Immunogen	Leucocytes from a patient suffering from a LGL type leukaemia.
Form	Liquid
Concentration	1 mg/mL
Purification	Protein A
Storage buffer	PBS, pH 7.4
Contains	no preservative
Storage conditions	4° C, do not freeze
RRID	AB_1071150

Applications	Tested Dilution	Publications
Flow Cytometry (Flow)	2 µg/mL	4 Publications
Immunoprecipitation (IP)	Assay-dependent	-
Neutralization (Neu)	-	1 Publication
Functional Assay (FN)	Assay-Dependent	-
Radioimmune Assays (RIA)	-	1 Publication
Miscellaneous PubMed (Misc)	-	2 Publications

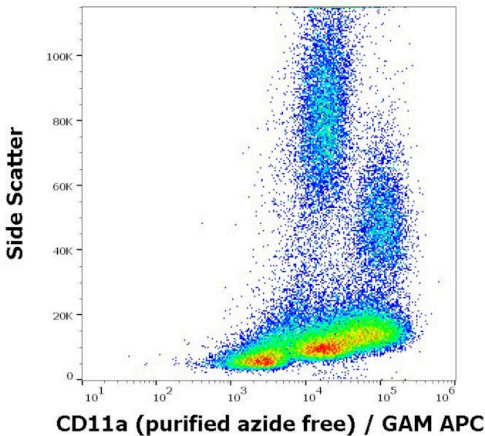
**Product Specific Information**  
Functional Application: Blocking.

Product Images For CD11a Monoclonal Antibody (MEM-25)



CD11a Antibody (MA1-19003) in Flow

Separation of human monocytes (red-filled) from blood debris (black-dashed) in flow cytometry analysis (surface staining) of human peripheral whole blood stained using anti-human CD11a (MEM-25) purified Monoclonal antibody (Product # MA1-19003) (azide free, concentration in sample 1  $\mu\text{g/mL}$ ) GAM APC.



CD11a Antibody (MA1-19003) in Flow

Flow cytometry surface staining pattern of human peripheral whole blood stained using anti-human CD11a (MEM-25) purified Monoclonal antibody (Product # MA1-19003) (azide free, concentration in sample 1  $\mu\text{g/mL}$ ) GAM APC.

## Flow Cytometry (4)

<p><b>Gastroenterology</b></p> <p><b>Gut homing receptors on CD8 T cells are retinoic acid dependent and not maintained by liver dendritic or stellate cells.</b></p> <p>"MA1-19003 was used in flow cytometry to elucidate the processes that control enterohepatic T-cell migration"</p> <p>Authors: Eksteen B,Mora JR,Haughton EL,Henderson NC,Lee-Turner L,Villablanca EJ,Curbishley SM,Aspinall AI,von Andrian UH,Adams DH</p>	<p><b>Year</b> 2009</p> <p><b>Dilution</b> 8 µg/ml</p>
<p><b>The Journal of biological chemistry</b></p> <p><b>Two-dimensional kinetics regulation of alphaLbeta2-ICAM-1 interaction by conformational changes of the alphaL-inserted domain.</b></p> <p>"MA1-19003 was used in flow cytometry to study conformational changes of the leukocyte integrin alphaLbeta2"</p> <p>Authors: Zhang F,Marcus WD,Goyal NH,Selvaraj P,Springer TA,Zhu C</p>	<p><b>Year</b> 2005</p>

[View more Flow references on thermofisher.cn](#)

## Neutralization (1)

<p><b>PloS one</b></p> <p><b>Intercellular adhesion molecule 1 promotes HIV-1 attachment but not fusion to target cells.</b></p> <p>"MA1-19003 was used in blocking or activating experiment to determine the role of ICAM-1/LFA-1 interactions in productive HIV-1 entry into lymphoid cells"</p> <p>Authors: Kondo N,Melikyan GB</p>	<p><b>Year</b> 2013</p>
--	-----------------------------

## Radioimmune Assays (1)

<p><b>Clinical and diagnostic laboratory immunology</b></p> <p><b>Dependence of bacterial protein adhesins on toll-like receptors for proinflammatory cytokine induction.</b></p> <p>"MA1-19003 was used in flow cytometry to determine of proinflammatory cytokine responses induced by certain bacterial protein adhesins are dependent on TLRs."</p> <p>Authors: Hajishengallis G,Martin M,Sojar HT,Sharma A,Schifferle RE,DeNardin E,Russell MW,Genco RJ</p>	<p><b>Year</b> 2002</p> <p><b>Species</b> Human</p>
--	---

## More applications with references on thermofisher.cn

### Misc (2)

For Research Use Only. Not for use in diagnostic procedures. Not for resale without express authorization. Products are warranted to operate or perform substantially in conformance with published Product specifications in effect at the time of sale, as set forth in the Production documentation, specifications and/or accompanying package inserts ("Documentation"). No claim of suitability for use in applications regulated by FDA is made. The warranty provided herein is valid only when used by properly trained individuals. Unless otherwise stated in the Documentation, this warranty is limited to one year from date of shipment when the Product is subjected to normal, proper and intended usage. This warranty does not extend to anyone other than the Buyer. Any model or sample furnished to Buyer is merely illustrative of the general type and quality of goods and does not represent that any Product will conform to such model or sample. NO OTHER WARRANTIES, EXPRESS OR IMPLIED, ARE GRANTED INCLUDING WITHOUT LIMITATION, IMPLIED WARRANTIES OF MERCHANTABILITY, FITNESS FOR ANY PARTICULAR PURPOSE, OR NON-INFRINGEMENT. BUYER'S EXCLUSIVE REMEDY FOR NON-CONFORMING PRODUCTS DURING THE WARRANTY PERIOD IS LIMITED TO REPAIR, REPLACEMENT OF OR REFUND FOR THE NON-CONFORMING PRODUCT(S) AT SELLER'S SOLE OPTION. THERE IS NO OBLIGATION TO REPAIR, REPLACE OR REFUND FOR PRODUCTS AS THE RESULT OF (i) ACCIDENT, DISASTER OR EVENT OF FORCE MAJEURE, (ii) MISUSE, FAULT OR NEGLIGENCE OF OR BY BUYER, (iii) USE OF THE PRODUCTS IN A MANNER FOR WHICH THEY WERE NOT DESIGNED, OR (iv) IMPROPER STORAGE AND HANDLING OF THE PRODUCTS. Unless otherwise expressly stated on the Product or in the documentation accompanying the Product, the Product is intended for research only and is not to be used for any other purpose, including without limitation, unauthorized commercial uses, in vitro diagnostic uses, ex vivo or in vivo therapeutic uses, or any type of consumption by or application to human or animals.