

FGF2 Monoclonal Antibody (F-343)

Product Details	
Size	250 µg
Species Reactivity	Human
Host/Isotype	Mouse / IgG1
Class	Monoclonal
Type	Antibody
Clone	F-343
Conjugate	Unconjugated
Immunogen	Purified full length native protein (Human).
Form	Liquid
Concentration	1 mg/mL
Purification	Protein G
Storage buffer	PBS, pH 7.2
Contains	no preservative
Storage conditions	Store at 4°C short term. For long term storage, store at -20°C, avoiding freeze/thaw cycles.
RRID	AB_558914

Applications	Tested Dilution	Publications
Western Blot (WB)	1:1250	-
Immunocytochemistry (ICC/IF)	1:100	-
ELISA (ELISA)	Assay-dependent	-

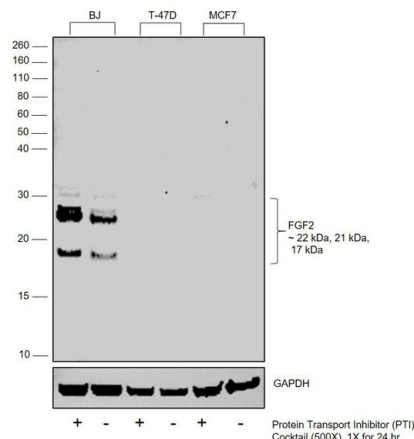
Product Specific Information

MA1-21363 detects FGF Basic in Human samples.

Product Images For FGF2 Monoclonal Antibody (F-343)

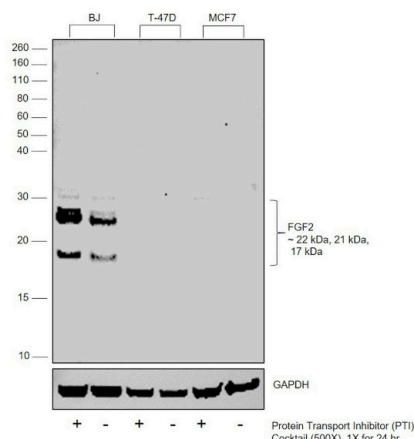
FGF2 Antibody (MA1-21363) in WB

Western blot was performed using Anti-FGF2 Monoclonal Antibody (F-343) (Product # MA1-21363) and 22kDa, 21kDa, 17kDa bands corresponding to FGF2 was observed in BJ, a fibroblast cell line, but not in T-47D and MCF7. Whole cell extracts (40 µg lysate) of BJ treated with PTI (1X for 4hrs) (Lane 1), BJ (Lane 2), T-47D treated with PTI (1X for 4hrs) (Lane 3), T-47D (Lane 4), MCF7 treated with PTI (1X for 4hrs) (Lane 5), MCF7 (Lane 6) were electrophoresed using NuPAGE™ 12% Bis-Tris Protein Gel (Product # NP0341BOX). Resolved proteins were then transferred onto a Nitrocellulose membrane (Product # IB23001) by iBlot® 2 Dry Blotting System (Product # IB21001). The blot was probed with the primary antibody (1:1250 dilution) and detected by chemiluminescence with Goat anti-Mouse IgG (H+L) Superclonal™ Recombinant Secondary Antibody, HRP (Product # A28177, 1:8000 dilution) using the iBright FL 1000 (Product # A32752). Chemiluminescent detection was performed using Novex® ECL Chemiluminescent Substrate Reagent Kit (Product # WP20005). FGF2, a protein of the fibroblast growth factor family, is secreted in high abundance by fibroblast cell lines like BJ. Entrapment of FGF2 using PTI increases intracellular accumulation in BJ but not in T-47D and MCF7 [10.1158/1078-0432.CCR-10-2727].



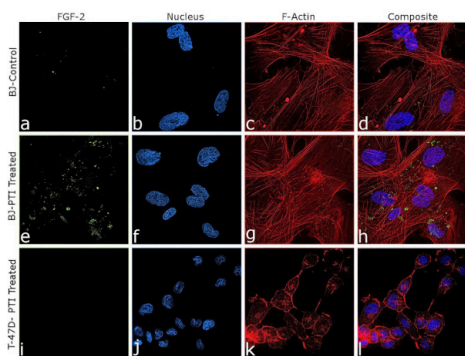
FGF2 Antibody (MA1-21363)

Antibody specificity was demonstrated by detection of differential basal expression of the target across cell lines owing to their inherent genetic constitution. Relative expression of FGF2 was increased in BJ cells treated with PTI (a fibroblast cell line) in comparison to T-47D treated with the same using Anti-FGF2 Monoclonal Antibody (F-343) (Product # MA1-21363) in Western Blot. {RE}



FGF2 Antibody (MA1-21363) in ICC/IF

Immunofluorescence analysis of FGF2 was performed using 80% confluent log phase BJ and T-47D control and PTI treated (1X for 4 hours) cells. The cells were fixed with 4% paraformaldehyde for 10 mins, permeabilized with 0.1% Triton™ X-100 for 10 mins, and blocked with 2% BSA for 45 mins at room temperature. The cells were labeled with FGF2 Monoclonal Antibody (F-343) (Product # MA1-21363) at 1:100 in 0.1% BSA, incubated at 4 degree celsius overnight and then labeled with Donkey anti-Mouse IgG (H+L) Highly Cross-Adsorbed Secondary Antibody, Alexa Fluor Plus 488 (Product # A32766), (1: 2500 dilution), for 45 mins at room temperature (Panel a,e,i: Green). Nuclei (Panel b,f,j: Blue) were stained with ProLong™ Diamond Antifade Mountant with DAPI (Product # P36962). F-actin (Panel c,g,k: Red) was stained with Rhodamine Phalloidin (Product # R415, 1:300). Panel d represents the merged image of untreated BJ cells showing faint staining for FGF2 that is enhanced upon PTI treatment (Panel h). Panel i represents T-47D cells showing no staining for FGF2 upon PTI treatment. The images were captured at 60X magnification. FGF2 follows type I unconventional secretory pathway where it undergoes self-oligomerization and interacts with the inner and outer leaflets of the plasma membrane for its release. The punctate pattern of FGF2 seen in panel d and h is similar to that shown by Steringer et.al. of the intermediates and oligomers of FGF2 for membrane insertion.



For Research Use Only. Not for use in diagnostic procedures. Not for resale without express authorization. Products are warranted to operate or perform substantially in conformance with published Product specifications in effect at the time of sale, as set forth in the Production documentation, specifications and/or accompanying package inserts ("Documentation"). No claim of suitability for use in applications regulated by FDA is made. The warranty provided herein is valid only when used by properly trained individuals. Unless otherwise stated in the Documentation, this warranty is limited to one year from date of shipment when the Product is subjected to normal, proper and intended usage. This warranty does not extend to anyone other than the Buyer. Any model or sample furnished to Buyer is merely illustrative of the general type and quality of goods and does not represent that any Product will conform to such model or sample. NO OTHER WARRANTIES, EXPRESS OR IMPLIED, ARE GRANTED INCLUDING WITHOUT LIMITATION, IMPLIED WARRANTIES OF MERCHANTABILITY, FITNESS FOR ANY PARTICULAR PURPOSE, OR NON-INFRINGEMENT. BUYER'S EXCLUSIVE REMEDY FOR NON-CONFORMING PRODUCTS DURING THE WARRANTY PERIOD IS LIMITED TO REPAIR, REPLACEMENT OF OR REFUND FOR THE NON-CONFORMING PRODUCT(S) AT SELLER'S SOLE OPTION. THERE IS NO OBLIGATION TO REPAIR, REPLACE OR REFUND FOR PRODUCTS AS THE RESULT OF (i) ACCIDENT, DISASTER OR EVENT OF FORCE MAJEURE, (ii) MISUSE, FAULT OR NEGLIGENCE OF OR BY BUYER, (iii) USE OF THE PRODUCTS IN A MANNER FOR WHICH THEY WERE NOT DESIGNED, OR (iv) IMPROPER STORAGE AND HANDLING OF THE PRODUCTS. Unless otherwise expressly stated on the Product or in the documentation accompanying the Product, the Product is intended for research only and is not to be used for any other purpose, including without limitation, unauthorized commercial uses, in vitro diagnostic uses, ex vivo or in vivo therapeutic uses, or any type of consumption by or application to human or animals.