

# S100 Monoclonal Antibody (8B10)

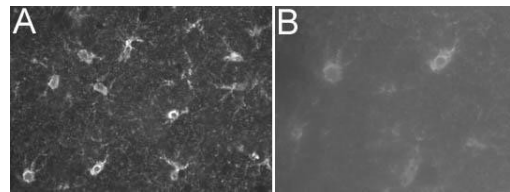
Product Details	
Size	200 µg
Species Reactivity	Human
Host/Isotype	Mouse / IgG1
Class	Monoclonal
Type	Antibody
Clone	8B10
Conjugate	Unconjugated
Immunogen	Full length human S100 protein.
Form	Liquid
Concentration	4.2 mg/mL
Purification	Protein A
Storage buffer	PBS, pH 7.4
Contains	0.1% sodium azide
Storage conditions	4° C, do not freeze
RRID	AB_561170

Applications	Tested Dilution	Publications
Western Blot (WB)	Assay-dependent	-
Immunohistochemistry (Paraffin) (IHC (P))	Assay-dependent	-
Immunohistochemistry - Free Floating (IHC (Free))	Assay-Dependent	-
ELISA (ELISA)	Assay-dependent	-

## Product Specific Information

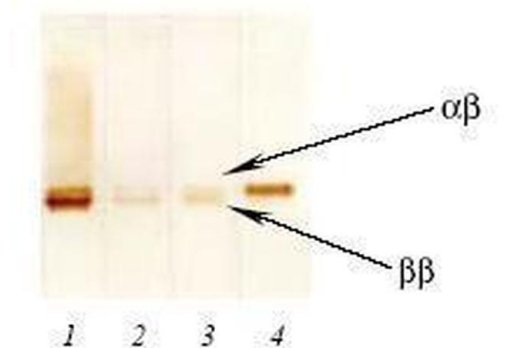
MA1-22734 detects S100 in human samples.

Product Images For S100 Monoclonal Antibody (8B10)



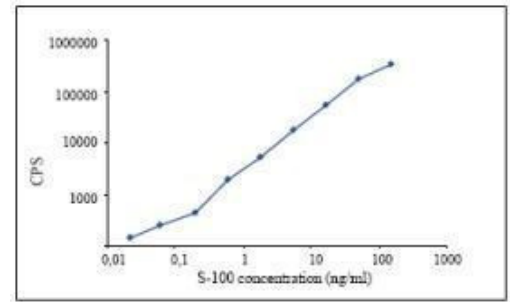
S100 Antibody (MA1-22734) in IHC

S100 Monoclonal Antibody (8B10) (Product # MA1-22734) at a dilution of 1:1,000, staining S100 (Alexa 488 secondary at 1:2,000) on rat brain tissue (30m thick coronal sections) in free floating Immunohistochemistry (see protocol link for detailed description). Images showing neuron body and processes: [A] 20x objective.



S100 Antibody (MA1-22734) in WB

Interaction of several monoclonal antibodies available to the S100 protein (1 g) from human brain in Western Blot, after native gel electrophoresis using the Ornstein-Davis system. Lane 1 = (Product # MA1-25775), Lane 2 = S100 Monoclonal Antibody (8B10) (Product # MA1-22734), ab Lane 3 = (Product # MA1-20103), Lane 4 = (Product # MA1-26969).



S100 Antibody (MA1-22734) in ELISA

S-100 ELISA calibration curve, from one step assay in streptavidin coated plates. S100 Monoclonal Antibody (8B10) (Product # MA1-22734) [200 ng/well] was used as capture and Eu- labelled (Product # MA1-20103) [200 ng/well] as detection. Antigen used was S-100 protein from the human brain. Incubated 20 minutes at 20°C.

For Research Use Only. Not for use in diagnostic procedures. Not for resale without express authorization. Products are warranted to operate or perform substantially in conformance with published Product specifications in effect at the time of sale, as set forth in the Production documentation, specifications and/or accompanying package inserts ("Documentation"). No claim of suitability for use in applications regulated by FDA is made. The warranty provided herein is valid only when used by properly trained individuals. Unless otherwise stated in the Documentation, this warranty is limited to one year from date of shipment when the Product is subjected to normal, proper and intended usage. This warranty does not extend to anyone other than the Buyer. Any model or sample furnished to Buyer is merely illustrative of the general type and quality of goods and does not represent that any Product will conform to such model or sample. NO OTHER WARRANTIES, EXPRESS OR IMPLIED, ARE GRANTED INCLUDING WITHOUT LIMITATION, IMPLIED WARRANTIES OF MERCHANTABILITY, FITNESS FOR ANY PARTICULAR PURPOSE, OR NON INFRINGEMENT. BUYER'S EXCLUSIVE REMEDY FOR NON-CONFORMING PRODUCTS DURING THE WARRANTY PERIOD IS LIMITED TO REPAIR, REPLACEMENT OF OR REFUND FOR THE NON-CONFORMING PRODUCT(S) AT SELLER'S SOLE OPTION. THERE IS NO OBLIGATION TO REPAIR, REPLACE OR REFUND FOR PRODUCTS AS THE RESULT OF (i) ACCIDENT, DISASTER OR EVENT OF FORCE MAJEURE, (ii) MISUSE, FAULT OR NEGLIGENCE OF OR BY BUYER, (iii) USE OF THE PRODUCTS IN A MANNER FOR WHICH THEY WERE NOT DESIGNED, OR (iv) IMPROPER STORAGE AND HANDLING OF THE PRODUCTS. Unless otherwise expressly stated on the Product or in the documentation accompanying the Product, the Product is intended for research only and is not to be used for any other purpose, including without limitation, unauthorized commercial uses, in vitro diagnostic uses, ex vivo or in vivo therapeutic uses, or any type of consumption by or application to human or animals.