

Cytochrome C Monoclonal Antibody (6H2.B4), Alexa Fluor™ 488

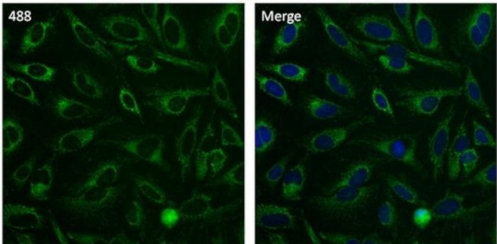
Product Details	
Size	50 µL
Species Reactivity	Fruit fly, Human, Mouse, Rabbit, Rat
Published Species	Human
Host/Isotype	Mouse / IgG1, kappa
Class	Monoclonal
Type	Antibody
Clone	6H2.B4
Conjugate	Alexa Fluor™ 488
Excitation/Emission Max	499/520 nm
Immunogen	Rat cytochrome C
Form	Liquid
Concentration	1 mg/mL
Purification	Protein A
Storage buffer	PBS, pH 7.4, with 1mg/mL BSA
Contains	0.05% sodium azide
Storage conditions	4° C, store in dark, DO NOT FREEZE!
RRID	AB_2663051

Applications	Tested Dilution	Publications
Immunocytochemistry (ICC/IF)	1-10 µg/mL	-
Flow Cytometry (Flow)	-	1 Publication

Product Specific Information

This antibody reacts with native Cytochrome C, but does not recognize denatured cytochrome C. The antibody recognizes a region in the vicinity of amino acid 62 of rat Cytochrome C.

Product Images For Cytochrome C Monoclonal Antibody (6H2.B4), Alexa Fluor™ 488



Cytochrome C Antibody (MA3-38200-A488) in ICC/IF
Immunofluorescent analysis of Cytochrome C (green) in HeLa cells. The cells were fixed with 4% Paraformaldehyde in PBS for 15 minutes at room temperature, and blocked with 3% BSA in PBS (Product # 37525) for 30 minutes at room temperature. Cells were stained with a Cytochrome C Monoclonal Antibody, AlexaFluor 488 conjugate (Product # MA7-00184-A488) at a dilution of 5 µg/mL in blocking buffer for 1 hour at room temperature protected from light. Nuclei (blue) were stained with Hoechst Dye (Product # 62249) at a dilution of 1: 10,000 in blocking buffer. Images were taken on a Thermo Scientific ToxInsight Instrument at 20X magnification.

Flow Cytometry (1)

Cell death and differentiation

A new quantitative assay for cytochrome c release in apoptotic cells.

"MA3-38200-A488 was used in Flow Cytometry to help highlight some of the problems associated with current methods to follow cytochrome c release."

Authors: Waterhouse NJ,Trapani JA

Year
2003

Species
Human

For Research Use Only. Not for use in diagnostic procedures. Not for resale without express authorization. Products are warranted to operate or perform substantially in conformance with published Product specifications in effect at the time of sale, as set forth in the Production documentation, specifications and/or accompanying package inserts ("Documentation"). No claim of suitability for use in applications regulated by FDA is made. The warranty provided herein is valid only when used by properly trained individuals. Unless otherwise stated in the Documentation, this warranty is limited to one year from date of shipment when the Product is subjected to normal, proper and intended usage. This warranty does not extend to anyone other than the Buyer. Any model or sample furnished to Buyer is merely illustrative of the general type and quality of goods and does not represent that any Product will conform to such model or sample. NO OTHER WARRANTIES, EXPRESS OR IMPLIED, ARE GRANTED INCLUDING WITHOUT LIMITATION, IMPLIED WARRANTIES OF MERCHANTABILITY, FITNESS FOR ANY PARTICULAR PURPOSE, OR NON INFRINGEMENT. BUYER'S EXCLUSIVE REMEDY FOR NON-CONFORMING PRODUCTS DURING THE WARRANTY PERIOD IS LIMITED TO REPAIR, REPLACEMENT OF OR REFUND FOR THE NON-CONFORMING PRODUCT(S) AT SELLER'S SOLE OPTION. THERE IS NO OBLIGATION TO REPAIR, REPLACE OR REFUND FOR PRODUCTS AS THE RESULT OF (I) ACCIDENT, DISASTER OR EVENT OF FORCE MAJEURE, (II) MISUSE, FAULT OR NEGLIGENCE OF OR BY BUYER, (III) USE OF THE PRODUCTS IN A MANNER FOR WHICH THEY WERE NOT DESIGNED, OR (IV) IMPROPER STORAGE AND HANDLING OF THE PRODUCTS. Unless otherwise expressly stated on the Product or in the documentation accompanying the Product, the Product is intended for research only and is not to be used for any other purpose, including without limitation, unauthorized commercial uses, in vitro diagnostic uses, ex vivo or in vivo therapeutic uses, or any type of consumption by or application to human or animals.