

# Moesin Monoclonal Antibody (38/87)

## Product Details

Size	500 µL
Species Reactivity	Bovine, Human, Rat
Published Species	Human, Mouse
Host/Isotype	Mouse / IgG1, kappa
Class	Monoclonal
Type	Antibody
Clone	38/87
Conjugate	Unconjugated
Immunogen	Moesin purified from cow uterus
Form	Liquid
Concentration	0.2 mg/mL
Purification	Protein G
Storage buffer	PBS, pH 7.4, with 0.2% BSA
Contains	0.09% sodium azide
Storage conditions	4° C
RRID	AB_10983113

## Applications

## Tested Dilution

## Publications

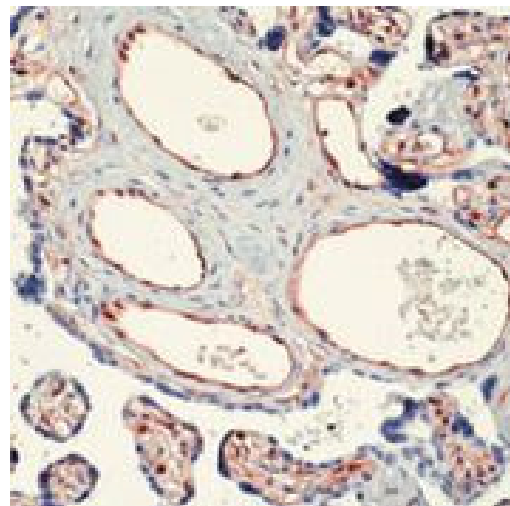
Western Blot (WB)	1-2 µg/mL	7 Publications
Immunohistochemistry (IHC)	-	7 Publications
Immunohistochemistry (Paraffin) (IHC (P))	0.25-0.5 µg/mL	-
Immunocytochemistry (ICC/IF)	-	1 Publication
Flow Cytometry (Flow)	-	1 Publication
Immunoprecipitation (IP)	2 µg/mL	-
Miscellaneous PubMed (Misc)	-	1 Publication

## Product Specific Information

MA5-14043 targets Moesin in IF, IHC (P), IP, and WB applications and shows reactivity with Bovine, Human, and Rat samples.

The MA5-14043 immunogen is moesin purified from cow uterus.

Product Images For Moesin Monoclonal Antibody (38/87)



**Moesin Antibody (MA5-14043) in IHC (P)**  
Formalin-fixed, paraffin-embedded human placenta stained with Moesin antibody using peroxidase-conjugate and AEC chromogen. Note cytoplasmic staining of endothelial cells.



Western Blot (7)

<div>The Journal of biological chemistry</div> <div><b>Signal-dependent slow leukocyte rolling does not require cytoskeletal anchorage of P-selectin glycoprotein ligand-1 (PSGL-1) or integrin L2.</b></div> <div>"MA5-14043 was used in western blot to study whether cytoskelatal-anchorage of PSGL-1 and alphaLbeta2 intergrin is required for signal-dependent slow leukocyte rolling"</div> <div>Authors: Shao B,Yago T,Coghill PA,Klopocki AG,Mehta-D'souza P,Schmidtke DW,Rodgers W,McEver RP</div>	<div>Year</div> <div>2012</div> <div>Species</div> <div>Human</div>
<div>Biochemical pharmacology</div> <div><b>The effect of sphingomyelin synthase 2 (SMS2) deficiency on the expression of drug transporters in mouse brain.</b></div> <div>"MA5-14043 was used in western blot to identify the relationship between sphingomyelin synthetase 2 levels and drug transporter expression"</div> <div>Authors: Zhang Y,Dong J,Zhu X,Wang W,Yang Q</div>	<div>Year</div> <div>2011</div> <div>Species</div> <div>Human</div>

[View more WB references on thermofisher.cn](#)

Immunohistochemistry (7)

<div>Head and neck pathology</div> <div><b>Cytoplasmic ezrin and moesin correlate with poor survival in head and neck squamous cell carcinoma.</b></div> <div>"MA5-14043 was used in immunohistochemistry to study the prognostic value of cytoplasmic expression of ezrin and moesin in head and neck squamous cell carcinoma"</div> <div>Authors: Schlecht NF,Brandwein-Gensler M,Smith RV,Kawachi N,Broughel D,Lin J,Keller CE,Reynolds PA,Gunn-Moore FJ,Harris T,Childs G,Belbin TJ,Prystowsky MB</div>	<div>Year</div> <div>2012</div> <div>Species</div> <div>Human</div> <div>Dilution</div> <div>1:400</div>
<div>Journal of surgical oncology</div> <div><b>Adhesion molecules as prognostic markers in pancreatic adenocarcinoma.</b></div> <div>"MA5-14043 was used in immunohistochemistry to study the prognostic value of ezrin, radixin, moesin and E-cadherin in pancreatic ductal adenocarcinoma"</div> <div>Authors: Torer N,Kayaselcuk F,Nursal TZ,Yildirim S,Tarim A,Nöyan T,Karakayali H</div>	<div>Year</div> <div>2007</div> <div>Species</div> <div>Human</div>

[View more IHC references on thermofisher.cn](#)

More applications with references on thermofisher.cn

- ICC/IF (1)
- Flow (1)
- Misc (1)

For Research Use Only. Not for use in diagnostic procedures. Not for resale without express authorization. Products are warranted to operate or perform substantially in conformance with published Product specifications in effect at the time of sale, as set forth in the Production documentation, specifications and/or accompanying package inserts ("Documentation"). No claim of suitability for use in applications regulated by FDA is made. The warranty provided herein is valid only when used by properly trained individuals. Unless otherwise stated in the Documentation, this warranty is limited to one year from date of shipment when the Product is subjected to normal, proper and intended usage. This warranty does not extend to anyone other than the Buyer. Any model or sample furnished to Buyer is merely illustrative of the general type and quality of goods and does not represent that any Product will conform to such model or sample. NO OTHER WARRANTIES, EXPRESS OR IMPLIED, ARE GRANTED INCLUDING WITHOUT LIMITATION, IMPLIED WARRANTIES OF MERCHANTABILITY, FITNESS FOR ANY PARTICULAR PURPOSE, OR NON INFRINGEMENT. BUYER'S EXCLUSIVE REMEDY FOR NON-CONFORMING PRODUCTS DURING THE WARRANTY PERIOD IS LIMITED TO REPAIR, REPLACEMENT OF OR REFUND FOR THE NON-CONFORMING PRODUCT(S) AT SELLER'S SOLE OPTION. THERE IS NO OBLIGATION TO REPAIR, REPLACE OR REFUND FOR PRODUCTS AS THE RESULT OF (I) ACCIDENT, DISASTER OR EVENT OF FORCE MAJEURE, (II) MISUSE, FAULT OR NEGLIGENCE OF OR BY BUYER, (III) USE OF THE PRODUCTS IN A MANNER FOR WHICH THEY WERE NOT DESIGNED, OR (IV) IMPROPER STORAGE AND HANDLING OF THE PRODUCTS. Unless otherwise expressly stated on the Product or in the documentation accompanying the Product, the Product is intended for research only and is not to be used for any other purpose, including without limitation, unauthorized commercial uses, in vitro diagnostic uses, ex vivo or in vivo therapeutic uses, or any type of consumption by or application to human or animals.