

beta Actin Loading Control Monoclonal Antibody (BA3R), Biotin

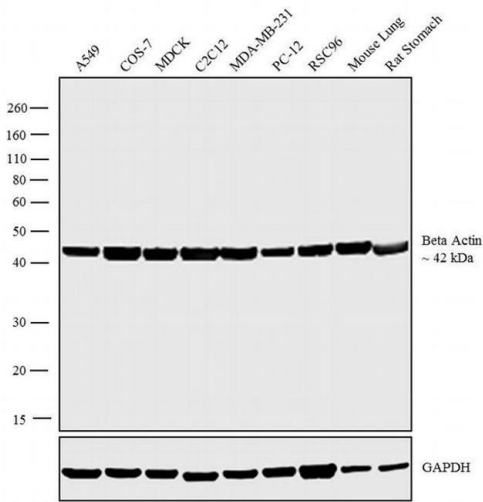
Product Details	
Size	50 µL
Species Reactivity	Dog, Chicken, Human, Mouse, Non-human primate, Rabbit, Rat
Published Species	Rat, Human
Host/Isotype	Mouse / IgG2b
Class	Monoclonal
Type	Antibody
Clone	BA3R
Conjugate	Biotin
Immunogen	Beta-actin N-terminal peptide.
Form	Liquid
Concentration	1 mg/mL
Purification	Protein A
Storage buffer	PBS with proprietary stabilizer
Contains	0.02% sodium azide
Storage conditions	4° C, do not freeze
RRID	AB_2537661

Applications	Tested Dilution	Publications
Western Blot (WB)	1 µg/mL	9 Publications
Flow Cytometry (Flow)	2 µg/test	-

Product Specific Information

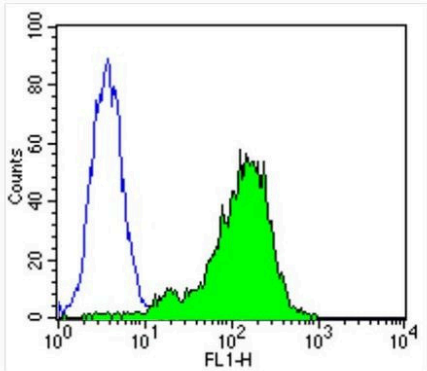
MA5-15739-BTIN has been successfully used for Western blot and FACS applications.

Product Images For beta Actin Loading Control Monoclonal Antibody (BA3R), Biotin



beta Actin Loading Control Antibody (MA5-15739-BTIN) in WB

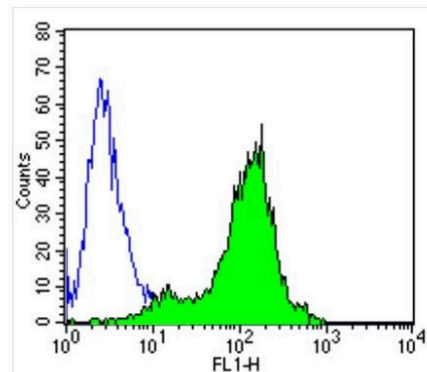
Western blot analysis was performed on whole cell extracts (30 µg lysate) of A549 (Lane 1), COS-7 (Lane 2), MDCK (Lane 3), C2C12 (Lane 4), MDA-MB-231 (Lane 5), PC-12 (Lane 6), RSC96 (Lane 7), tissue extracts of Mouse Lung (Lane 8) and Rat stomach (Lane 9). The blot was probed with beta Actin Loading Control Monoclonal Antibody (BA3R), Biotin (Product # MA5-15739-BTIN, 1 µg/mL) and detected by chemiluminescence. A 42 kDa band corresponding to beta Actin was observed across the cell lines and tissues tested. Known quantity of protein samples were electrophoresed using Novex® NuPAGE® 10% Bis-Tris gel (Product # NP0322BOX), XCell SureLock™ Electrophoresis System (Product # EI0002) and Novex® Sharp Pre-Stained Protein Standard (Product # LC5800). Resolved proteins were then transferred onto a nitrocellulose membrane with iBlot® 2 Dry Blotting System (Product # IB21001). The membrane was probed with the relevant primary antibody following blocking with 5 % skimmed milk. This is followed by incubating the membrane with Poly-HRP Streptavidin (Product # N200, 1:10,000 dilution). Chemiluminescent detection was performed using Pierce™ ECL Western Blotting Substrate (Product # 32106).



Cell: Hela
Concentration: 2µg/test (100ul)
Theory location: Cytoplasm

beta Actin Loading Control Antibody (MA5-15739-BTIN) in Flow

Flow cytometry analysis of Beta Actin in Hela cells (green) compared to an isotype control (blue). Cells were harvested, adjusted to a concentration of 1-5x10⁶ cells/mL, fixed with 2% paraformaldehyde and washed with PBS. Cells were blocked with a 2% solution of BSA-PBS for 30 min at room temperature and incubated with a Beta Actin loading control antibody (Product # MA5-15739) at a dilution of 2 µg/test for 40 min at room temperature. Cells were then incubated for 40 min at room temperature in the dark using a Dylight 488-conjugated secondary antibody and re-suspended in PBS for FACS analysis.



Cell: A431
Concentration: 2µg/test (100ul)
Theory location: Cytoplasm

beta Actin Loading Control Antibody (MA5-15739-BTIN) in Flow

Flow cytometry analysis of Beta Actin in A431 cells (green) compared to an isotype control (blue). Cells were harvested, adjusted to a concentration of 1-5x10⁶ cells/mL, fixed with 2% paraformaldehyde and washed with PBS. Cells were blocked with a 2% solution of BSA-PBS for 30 min at room temperature and incubated with a Beta Actin loading control antibody (Product # MA5-15739) at a dilution of 2 µg/test for 40 min at room temperature. Cells were then incubated for 40 min at room temperature in the dark using a Dylight 488-conjugated secondary antibody and re-suspended in PBS for FACS analysis.

View more figures on thermofisher.cn

Western Blot (9)

<p>Frontiers in pharmacology</p> <p>Targeting the Eph/Ephrin System as Anti-Inflammatory Strategy in IBD.</p> <p>"MA5-15739-BTIN was used in Western Blotting to point to a potential role of the EphB/ephrin-B system as a pharmacological target in intestinal inflammatory disorders."</p> <p>Authors: Grandi A,Zini I,Palese S,Giorgio C,Tognolini M,Marchesani F,Bruno S,Flammini L,Cantoni AM,Castelli R,Lodola A,Fusari A,Barocelli E,Bertoni S</p>	<p>Year 2020</p> <p>Species Human</p>
<p>Journal of neuroinflammation</p> <p>CLEC14A deficiency exacerbates neuronal loss by increasing blood-brain barrier permeability and inflammation.</p> <p>"Published figure using beta Actin Loading Control monoclonal antibody (Product # MA5-15739-BTIN) in Western Blot"</p> <p>Authors: Kim Y, Lee S, Zhang H, Lee S, Kim H, Kim Y, Won MH, Kim YM, Kwon YG</p>	<p>Year 2020</p>

[View more WB references on thermofisher.cn](#)

More applications with references on thermofisher.cn

For Research Use Only. Not for use in diagnostic procedures. Not for resale without express authorization. Products are warranted to operate or perform substantially in conformance with published Product specifications in effect at the time of sale, as set forth in the Production documentation, specifications and/or accompanying package inserts ("Documentation"). No claim of suitability for use in applications regulated by FDA is made. The warranty provided herein is valid only when used by properly trained individuals. Unless otherwise stated in the Documentation, this warranty is limited to one year from date of shipment when the Product is subjected to normal, proper and intended usage. This warranty does not extend to anyone other than the Buyer. Any model or sample furnished to Buyer is merely illustrative of the general type and quality of goods and does not represent that any Product will conform to such model or sample. NO OTHER WARRANTIES, EXPRESS OR IMPLIED, ARE GRANTED INCLUDING WITHOUT LIMITATION, IMPLIED WARRANTIES OF MERCHANTABILITY, FITNESS FOR ANY PARTICULAR PURPOSE, OR NON-INFRINGEMENT. BUYER'S EXCLUSIVE REMEDY FOR NON-CONFORMING PRODUCTS DURING THE WARRANTY PERIOD IS LIMITED TO REPAIR, REPLACEMENT OF OR REFUND FOR THE NON-CONFORMING PRODUCT(S) AT SELLER'S SOLE OPTION. THERE IS NO OBLIGATION TO REPAIR, REPLACE OR REFUND FOR PRODUCTS AS THE RESULT OF (I) ACCIDENT, DISASTER OR EVENT OF FORCE MAJEURE, (II) MISUSE, FAULT OR NEGLIGENCE OF OR BY BUYER, (III) USE OF THE PRODUCTS IN A MANNER FOR WHICH THEY WERE NOT DESIGNED, OR (IV) IMPROPER STORAGE AND HANDLING OF THE PRODUCTS. Unless otherwise expressly stated on the Product or in the documentation accompanying the Product, the Product is intended for research only and is not to be used for any other purpose, including without limitation, unauthorized commercial uses, in vitro diagnostic uses, ex vivo or in vivo therapeutic uses, or any type of consumption by or application to human or animals.