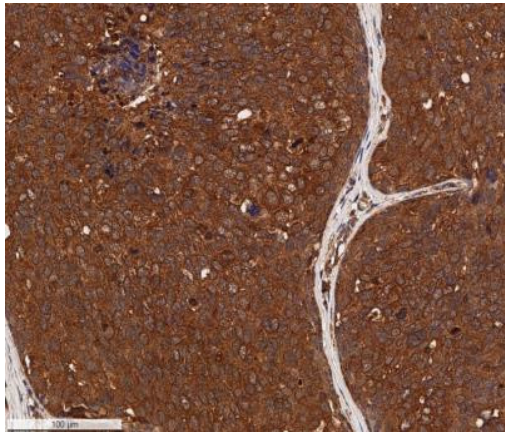


Cytokeratin 1 Monoclonal Antibody (LHK1)

Product Details	
Size	100 µL
Species Reactivity	Human, Rat
Published Species	Human
Host/Isotype	Mouse / IgG2a, kappa
Class	Monoclonal
Type	Antibody
Clone	LHK1
Conjugate	Unconjugated
Immunogen	C-terminal peptide sequence of human Cytokeratin 1
Form	Liquid
Concentration	1.0 mg/mL
Purification	Protein G
Storage buffer	PBS
Contains	0.02% sodium azide
Storage conditions	Store at 4°C short term. For long term storage, store at -20°C, avoiding freeze/thaw cycles.
RRID	AB_11152556

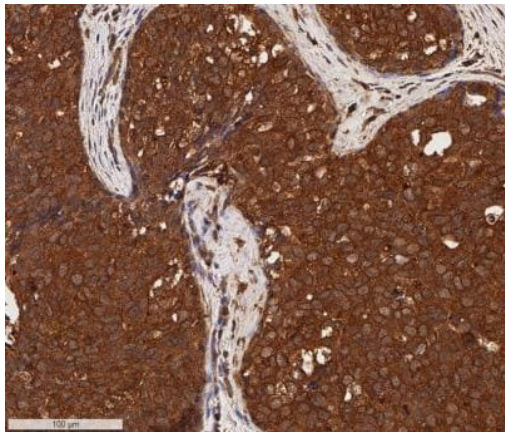
Applications	Tested Dilution	Publications
Western Blot (WB)	0.5-2 µg/mL	-
Immunohistochemistry (Paraffin) (IHC (P))	2-5 µg/mL	1 Publication
Immunohistochemistry (Frozen) (IHC (F))	5-10 µg/mL	-
Immunocytochemistry (ICC/IF)	5 µg/mL	-

Product Images For Cytokeratin 1 Monoclonal Antibody (LHK1)



Cytokeratin 1 Antibody (MA5-16032) in IHC (P)

Immunohistochemical analysis of Cytokeratin 1 in formalin fixed paraffin-embedded (FFPE) human breast cancer. Samples were incubated in Cytokeratin 1 monoclonal antibody (Product # MA5-16032) using a dilution of 5 μg/mL. Bond Rx autostainer (Leica Biosystems). The assay involved 20 minutes of heat induced antigen retrieval (HIER) using 10mM sodium citrate buffer (pH 6.0) and endogenous peroxidase quenching with peroxide block. The sections were incubated with primary antibody for 30 minutes and Bond Polymer Refine Detection (Leica Biosystems) with DAB was used for signal development followed by counterstaining with hematoxylin. Whole slide scanning and capturing of representative images (20X) was performed using Aperio AT2 (Leica Biosystems). A membrane-cytoplasmic staining of Cytokeratin 1 was observed in the cancer cells with signal localized more to the cell membranes. Tumor cores showed a decreased staining and tumor stroma was mostly negative for Cytokeratin 1.

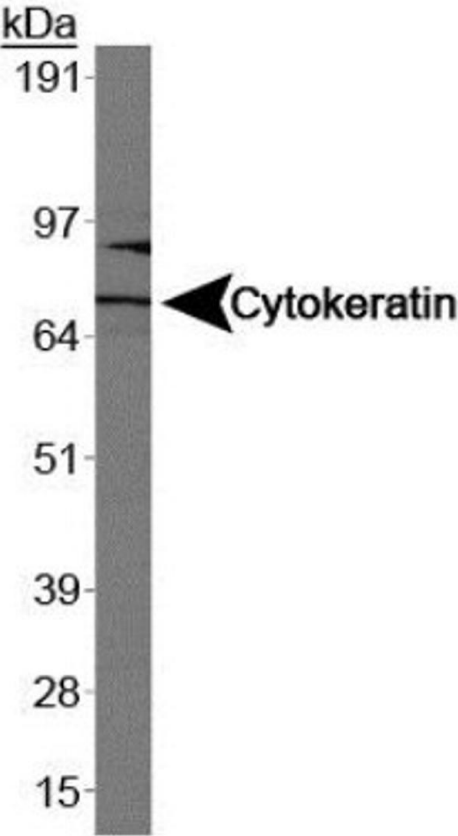


Cytokeratin 1 Antibody (MA5-16032) in IHC (P)

Immunohistochemical analysis of Cytokeratin 1 in formalin fixed paraffin-embedded (FFPE) human breast cancer. Samples were incubated in Cytokeratin 1 monoclonal antibody (Product # MA5-16032) using a dilution of 5 μg/mL. Bond Rx autostainer (Leica Biosystems). The assay involved 20 minutes of heat induced antigen retrieval (HIER) using 10mM sodium citrate buffer (pH 6.0) and endogenous peroxidase quenching with peroxide block. The sections were incubated with primary antibody for 30 minutes and Bond Polymer Refine Detection (Leica Biosystems) with DAB was used for signal development followed by counterstaining with hematoxylin. Whole slide scanning and capturing of representative images (20X) was performed using Aperio AT2 (Leica Biosystems). A membrane-cytoplasmic staining of Cytokeratin 1 was observed in the cancer cells with signal localized more to the cell membranes. Tumor stroma was mostly negative for Cytokeratin 1. Staining was performed by Histowiz.

Cytokeratin 1 Antibody (MA5-16032) in WB

Western blot analysis of Cytokeratin 1 in Caco-2. Sample was incubated in Cytokeratin 1 monoclonal antibody (Product # MA5-16032).



Immunohistochemistry (Paraffin) (1)

<p>Clinical cancer research : an official journal of the American Association for Cancer Research</p> <p>Transcriptional Mechanisms of Resistance to Anti-PD-1 Therapy.</p> <p>"MA516032 was used in immunohistochemistry - paraffin section to characterize multiple disease sites in a patient with widely metastatic melanoma who had a heterogeneous response"</p> <p>Authors: Ascierto ML,Makohon-Moore A,Lipson EJ,Taube JM,McMiller TL,Berger AE,Fan J,Kaunitz GJ,Cottrell TR,Kohutek ZA,Favorov A,Makarov V,Riaz N,Chan TA,Cope L,Hruban RH,Pardoll DM,Taylor BS,Solit DB,Iacobuzio-Donahue CA,Topalian SL</p>	<p>Year 2017</p> <p>Species Human</p>
---	---

For Research Use Only. Not for use in diagnostic procedures. Not for resale without express authorization. Products are warranted to operate or perform substantially in conformance with published Product specifications in effect at the time of sale, as set forth in the Production documentation, specifications and/or accompanying package inserts ("Documentation"). No claim of suitability for use in applications regulated by FDA is made. The warranty provided herein is valid only when used by properly trained individuals. Unless otherwise stated in the Documentation, this warranty is limited to one year from date of shipment when the Product is subjected to normal, proper and intended usage. This warranty does not extend to anyone other than the Buyer. Any model or sample furnished to Buyer is merely illustrative of the general type and quality of goods and does not represent that any Product will conform to such model or sample. NO OTHER WARRANTIES, EXPRESS OR IMPLIED, ARE GRANTED INCLUDING WITHOUT LIMITATION, IMPLIED WARRANTIES OF MERCHANTABILITY, FITNESS FOR ANY PARTICULAR PURPOSE, OR NON-INFRINGEMENT. BUYER'S EXCLUSIVE REMEDY FOR NON-CONFORMING PRODUCTS DURING THE WARRANTY PERIOD IS LIMITED TO REPAIR, REPLACEMENT OF OR REFUND FOR THE NON-CONFORMING PRODUCT(S) AT SELLER'S SOLE OPTION. THERE IS NO OBLIGATION TO REPAIR, REPLACE OR REFUND FOR PRODUCTS AS THE RESULT OF (I) ACCIDENT, DISASTER OR EVENT OF FORCE MAJEURE, (II) MISUSE, FAULT OR NEGLIGENCE OF OR BY BUYER, (III) USE OF THE PRODUCTS IN A MANNER FOR WHICH THEY WERE NOT DESIGNED, OR (IV) IMPROPER STORAGE AND HANDLING OF THE PRODUCTS. Unless otherwise expressly stated on the Product or in the documentation accompanying the Product, the Product is intended for research only and is not to be used for any other purpose, including without limitation, unauthorized commercial uses, in vitro diagnostic uses, ex vivo or in vivo therapeutic uses, or any type of consumption by or application to human or animals.