

TLR4 Monoclonal Antibody (HTA125), PE

Product Details

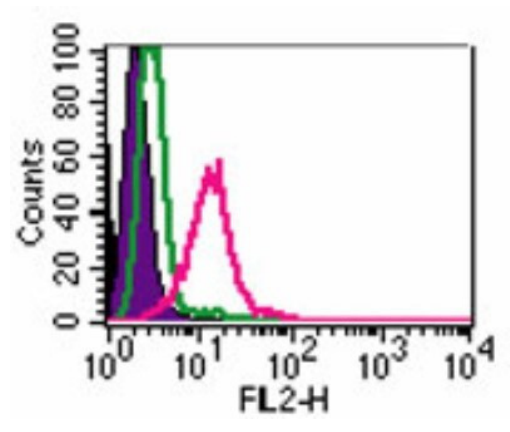
Size	100 µL
Species Reactivity	Dog, Human, Mouse
Host/Isotype	Mouse / IgG2a
Class	Monoclonal
Type	Antibody
Clone	HTA125
Conjugate	PE
Excitation/Emission Max	565/576 nm
Immunogen	Ba/F3 cell line expressing human TLR4 cell surface antigen
Form	Liquid
Concentration	0.54 mg/mL
Purification	Protein G
Storage buffer	PBS
Contains	0.05% sodium azide
Storage conditions	4° C, store in dark
RRID	AB_2537727

Applications	Tested Dilution	Publications
Immunocytochemistry (ICC/IF)	Assay-Dependent	-
Flow Cytometry (Flow)	1 µL/ 1 million cells	-

Product Specific Information

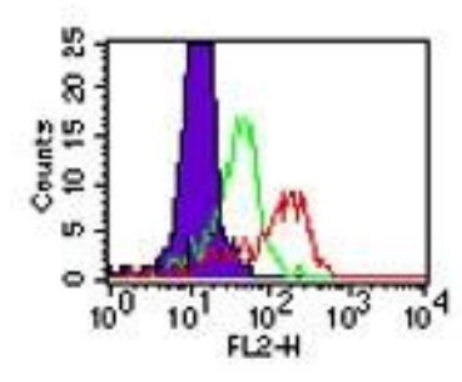
This antibody has been demonstrated to block activation of monocytes with LPS.

Product Images For TLR4 Monoclonal Antibody (HTA125), PE



TLR4 Antibody (MA5-16209) in Flow

Flow cytometry of TLR4 in ThP1 cells. Samples were incubated in TLR4 monoclonal antibody (Product # MA5-16209) using a dilution of 2 µg/10⁶ cells. The shaded histogram represents ThP1 cells only, green represents isotype control antibody, and red represents TLR4 antibody.



TLR4 Antibody (MA5-16209) in Flow

Flow cytometry of TLR4 in human PBMCs. Samples were incubated in TLR4 monoclonal antibody (Product # MA5-16209) using a dilution of 0.5 µg/10⁶ cells. The shaded histogram represents cells without anti-TLR4 antibody; green represents the isotype control; red represents anti-TLR4.

For Research Use Only. Not for use in diagnostic procedures. Not for resale without express authorization. Products are warranted to operate or perform substantially in conformance with published Product specifications in effect at the time of sale, as set forth in the Production documentation, specifications and/or accompanying package inserts ("Documentation"). No claim of suitability for use in applications regulated by FDA is made. The warranty provided herein is valid only when used by properly trained individuals. Unless otherwise stated in the Documentation, this warranty is limited to one year from date of shipment when the Product is subjected to normal, proper and intended usage. This warranty does not extend to anyone other than the Buyer. Any model or sample furnished to Buyer is merely illustrative of the general type and quality of goods and does not represent that any Product will conform to such model or sample. NO OTHER WARRANTIES, EXPRESS OR IMPLIED, ARE GRANTED INCLUDING WITHOUT LIMITATION, IMPLIED WARRANTIES OF MERCHANTABILITY, FITNESS FOR ANY PARTICULAR PURPOSE, OR NON INFRINGEMENT. BUYER'S EXCLUSIVE REMEDY FOR NON-CONFORMING PRODUCTS DURING THE WARRANTY PERIOD IS LIMITED TO REPAIR, REPLACEMENT OF OR REFUND FOR THE NON-CONFORMING PRODUCT(S) AT SELLER'S SOLE OPTION. THERE IS NO OBLIGATION TO REPAIR, REPLACE OR REFUND FOR PRODUCTS AS THE RESULT OF (I) ACCIDENT, DISASTER OR EVENT OF FORCE MAJEURE, (II) MISUSE, FAULT OR NEGLIGENCE OF OR BY BUYER, (III) USE OF THE PRODUCTS IN A MANNER FOR WHICH THEY WERE NOT DESIGNED, OR (IV) IMPROPER STORAGE AND HANDLING OF THE PRODUCTS. Unless otherwise expressly stated on the Product or in the documentation accompanying the Product, the Product is intended for research only and is not to be used for any other purpose, including without limitation, unauthorized commercial uses, in vitro diagnostic uses, ex vivo or in vivo therapeutic uses, or any type of consumption by or application to human or animals.