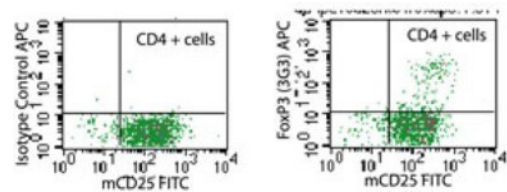


# FOXP3 Monoclonal Antibody (3G3), APC

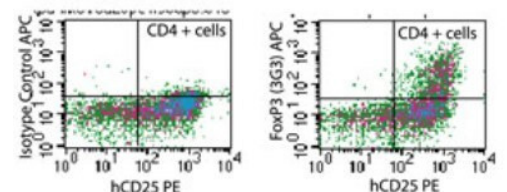
Product Details	
Size	0.1 mL
Species Reactivity	Human, Mouse
Published Species	Human
Host/Isotype	Mouse / IgG1, kappa
Class	Monoclonal
Type	Antibody
Clone	3G3
Conjugate	APC
Excitation/Emission Max	651/660 nm
Immunogen	Full-length His-tagged murine FOXP3 was used as the immunogen.
Form	Liquid
Concentration	0.76 mg/mL
Purification	Protein G
Storage buffer	PBS
Contains	0.05% sodium azide
Storage conditions	4° C, store in dark
RRID	AB_2537742

Applications	Tested Dilution	Publications
Flow Cytometry (Flow)	1 µL per million cells	1 Publication

## Product Images For FOXP3 Monoclonal Antibody (3G3), APC



**FOXP3 Antibody (MA5-16224) in Flow**  
Flow cytometry of FOXP3 in mouse splenocytes stimulated with anti-mCD3 and rmlL-2 for 48 hours using isotype control (left) and (right). Samples were incubated in FOXP3 monoclonal antibody (Product # MA5-16224) using a dilution of 0.1 µg/10<sup>6</sup> cells.



**FOXP3 Antibody (MA5-16224) in Flow**  
Flow cytometry of FOXP3 in human PBMCs stimulated with anti-hCD3 and rhIL-2 for 48 hours. Samples were incubated in FOXP3 monoclonal antibody (Product # MA5-16224) using a dilution of 1 µg/10<sup>6</sup> cells and isotype control (left). Products used: anti-CD4 FITC conjugate.

Flow Cytometry (1)

Cancer cell international	Year 2022
Increased activated regulatory T cell subsets and aging Treg-like cells in multiple myeloma and monoclonal gammopathy of undetermined significance: a case control study.	Species Human
"MA5-16224 was used in Flow cytometry/Cell sorting to study alterations in levels of of activated regulatory T cells and ageing regulatory T cell-like cells in patients with multiple myeloma and monoclonal gammopathy of undetermined significance."	
Authors: Wang JN,Cao XX,Zhao AL,Cai H,Wang X,Li J	

For Research Use Only. Not for use in diagnostic procedures. Not for resale without express authorization. Products are warranted to operate or perform substantially in conformance with published Product specifications in effect at the time of sale, as set forth in the Production documentation, specifications and/or accompanying package inserts ("Documentation"). No claim of suitability for use in applications regulated by FDA is made. The warranty provided herein is valid only when used by properly trained individuals. Unless otherwise stated in the Documentation, this warranty is limited to one year from date of shipment when the Product is subjected to normal, proper and intended usage. This warranty does not extend to anyone other than the Buyer. Any model or sample furnished to Buyer is merely illustrative of the general type and quality of goods and does not represent that any Product will conform to such model or sample. NO OTHER WARRANTIES, EXPRESS OR IMPLIED, ARE GRANTED INCLUDING WITHOUT LIMITATION, IMPLIED WARRANTIES OF MERCHANTABILITY, FITNESS FOR ANY PARTICULAR PURPOSE, OR NON INFRINGEMENT. BUYER'S EXCLUSIVE REMEDY FOR NON-CONFORMING PRODUCTS DURING THE WARRANTY PERIOD IS LIMITED TO REPAIR, REPLACEMENT OF OR REFUND FOR THE NON-CONFORMING PRODUCT(S) AT SELLER'S SOLE OPTION. THERE IS NO OBLIGATION TO REPAIR, REPLACE OR REFUND FOR PRODUCTS AS THE RESULT OF (I) ACCIDENT, DISASTER OR EVENT OF FORCE MAJEURE, (II) MISUSE, FAULT OR NEGLIGENCE OF OR BY BUYER, (III) USE OF THE PRODUCTS IN A MANNER FOR WHICH THEY WERE NOT DESIGNED, OR (IV) IMPROPER STORAGE AND HANDLING OF THE PRODUCTS. Unless otherwise expressly stated on the Product or in the documentation accompanying the Product, the Product is intended for research only and is not to be used for any other purpose, including without limitation, unauthorized commercial uses, in vitro diagnostic uses, ex vivo or in vivo therapeutic uses, or any type of consumption by or application to human or animals.