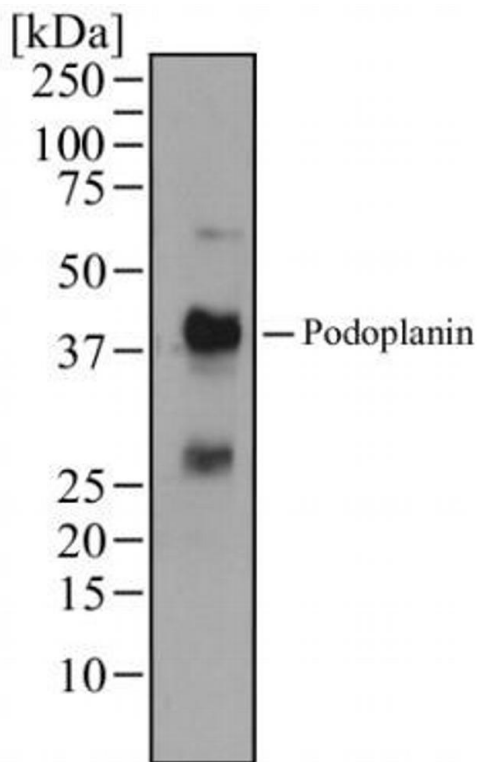


Podoplanin Monoclonal Antibody (pmab-1)

Product Details	
Size	100 µg
Species Reactivity	Mouse
Published Species	Mouse
Host/Isotype	Rat / IgG2a, kappa
Class	Monoclonal
Type	Antibody
Clone	pmab-1
Conjugate	Unconjugated
Immunogen	Podoplanin
Form	Liquid
Concentration	1.0 mg/mL
Purification	Protein G
Storage buffer	PBS
Contains	0.05% sodium azide
Storage conditions	Store at 4°C short term. For long term storage, store at -20°C, avoiding freeze/thaw cycles.
RRID	AB_2537787

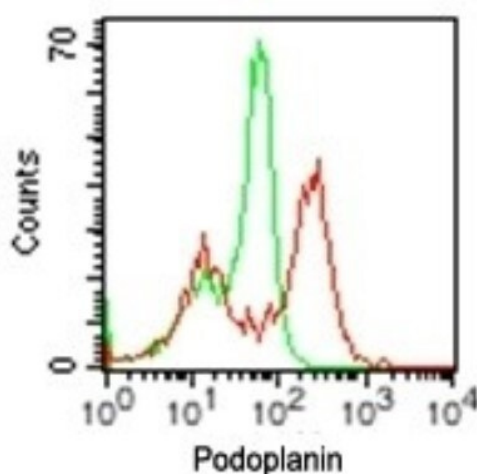
Applications	Tested Dilution	Publications
Western Blot (WB)	3-5 µg/mL	-
Flow Cytometry (Flow)	0.5 µg/10 ⁵ cells	1 Publication

Product Images For Podoplanin Monoclonal Antibody (pmab-1)



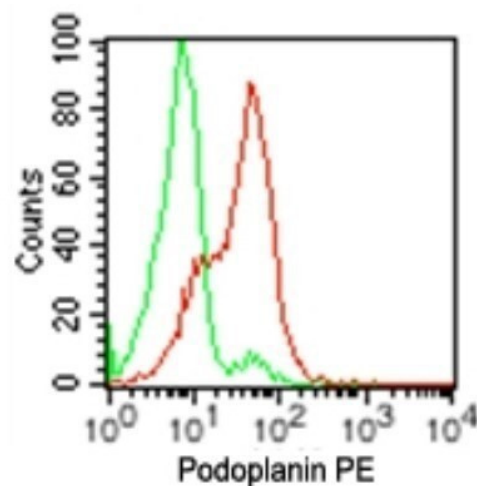
Podoplanin Antibody (MA5-16270) in WB

Western blot analysis of Podoplanin in mouse fetal lung tissue. Samples were incubated in Podoplanin monoclonal antibody (Product # MA5-16270) using a dilution of 1 µg/mL.



Podoplanin Antibody (MA5-16270) in Flow

Flow cytometry of Podoplanin in Mouse LLC1 cells. Samples were incubated in Podoplanin monoclonal antibody (Product # MA5-16270) and 0.5 µg of isotype control antibody using a dilution of 0.5 µg followed by APC-conjugated secondary antibody. Podoplanin antibody (red) and isotype control antibody (green).



Podoplanin Antibody (MA5-16270) in Flow

Flow cytometry of Podoplanin in Mouse F9 tumor cell line. Samples were incubated in Podoplanin monoclonal antibody (Product # MA5-16270) using a dilution of 0.5 µg. Antibody (PE conjugated; red) and 0.5 µg of isotype control antibody (green). Cell surface flow kit was used for this test.

1 Reference

Flow Cytometry (1)

Cancer research	Year 2018
Semaphorin 7A Promotes Macrophage-Mediated Lymphatic Remodeling during Postpartum Mammary Gland Involution and in Breast Cancer.	Species Mouse
"MA5-16270 was used in Flow cytometry/Cell sorting to indicate that SEMA7A may orchestrate macrophage-mediated lymphatic vessel remodeling, which in turn drives metastasis in breast cancer."	
Authors: Elder AM,Tamburini BAJ,Crump LS,Black SA,Wessells VM,Schedin PJ,Borges VF,Lyons TR	

For Research Use Only. Not for use in diagnostic procedures. Not for resale without express authorization. Products are warranted to operate or perform substantially in conformance with published Product specifications in effect at the time of sale, as set forth in the Production documentation, specifications and/or accompanying package inserts ("Documentation"). No claim of suitability for use in applications regulated by FDA is made. The warranty provided herein is valid only when used by properly trained individuals. Unless otherwise stated in the Documentation, this warranty is limited to one year from date of shipment when the Product is subjected to normal, proper and intended usage. This warranty does not extend to anyone other than the Buyer. Any model or sample furnished to Buyer is merely illustrative of the general type and quality of goods and does not represent that any Product will conform to such model or sample. NO OTHER WARRANTIES, EXPRESS OR IMPLIED, ARE GRANTED INCLUDING WITHOUT LIMITATION, IMPLIED WARRANTIES OF MERCHANTABILITY, FITNESS FOR ANY PARTICULAR PURPOSE, OR NON INFRINGEMENT. BUYER'S EXCLUSIVE REMEDY FOR NON-CONFORMING PRODUCTS DURING THE WARRANTY PERIOD IS LIMITED TO REPAIR, REPLACEMENT OF OR REFUND FOR THE NON-CONFORMING PRODUCT(S) AT SELLER'S SOLE OPTION. THERE IS NO OBLIGATION TO REPAIR, REPLACE OR REFUND FOR PRODUCTS AS THE RESULT OF (I) ACCIDENT, DISASTER OR EVENT OF FORCE MAJEURE, (II) MISUSE, FAULT OR NEGLIGENCE OF OR BY BUYER, (III) USE OF THE PRODUCTS IN A MANNER FOR WHICH THEY WERE NOT DESIGNED, OR (IV) IMPROPER STORAGE AND HANDLING OF THE PRODUCTS. Unless otherwise expressly stated on the Product or in the documentation accompanying the Product, the Product is intended for research only and is not to be used for any other purpose, including without limitation, unauthorized commercial uses, in vitro diagnostic uses, ex vivo or in vivo therapeutic uses, or any type of consumption by or application to human or animals.