

# Mesothelin Monoclonal Antibody (SP74)

Product Details	
Size	500 µL
Species Reactivity	Human
Published Species	Human
Host/Isotype	Rabbit / IgG
Class	Monoclonal
Type	Antibody
Clone	SP74
Conjugate	Unconjugated
Immunogen	Synthetic peptide corresponding to C-terminus of human mesothelin protein.
Form	Liquid
Purification	Protein A/G
Storage buffer	PBS, pH 7.6, with 1% BSA
Contains	0.1% sodium azide
Storage conditions	-20° C, Avoid Freeze/Thaw Cycles
RRID	AB_2537897

Applications	Tested Dilution	Publications
Western Blot (WB)	0.32 ug/mL	-
Immunohistochemistry (Paraffin) (IHC (P))	1:100	1 Publication

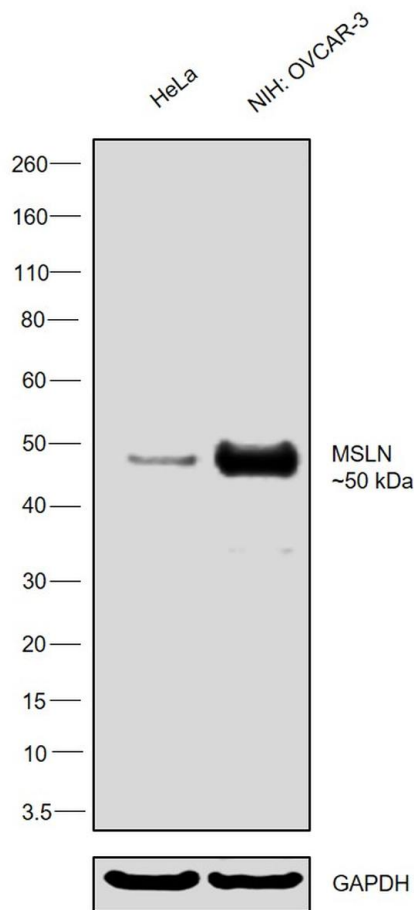
## Product Specific Information

Heat-mediated antigen retrieval is recommended prior to staining, using a 10mM citrate buffer, pH 6.0, for 10 minutes followed by cooling at room temperature for 20 min. Following antigen retrieval, incubate samples with primary antibody for 10 min at room temperature. A suggested positive control is mesothelioma.

Product Images For Mesothelin Monoclonal Antibody (SP74)

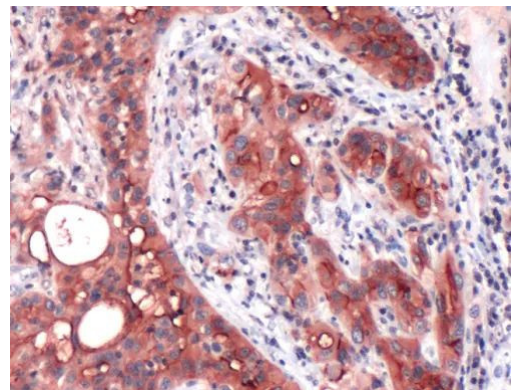
Mesothelin Antibody (MA5-16378) in WB

Western Blot was performed using Anti-Mesothelin Monoclonal Antibody (SP74) (Product # MA5-16378) and a ~50 kDa band corresponding to Mesothelin was observed across cell lines tested. Whole cell extracts (30 µg lysate) of HeLa (Lane 1) and NIH:OVCAR-3 (Lane 2) were electrophoresed using NuPAGE™ 4-12% Bis-Tris Protein Gel (Product # NP0321BOX). Resolved proteins were then transferred onto a nitrocellulose membrane (Product # LC2001) by iBlot® 2 Dry Blotting System (Product # IB21001). The blot was probed with the primary antibody (1:1000 dilution) and detected by chemiluminescence with Goat anti-Rabbit IgG (Heavy Chain) Superclonal™ Recombinant Secondary Antibody, HRP (Product # A27036, 1:4000 dilution) using the iBright FL 1000 (Product # A32752). Chemiluminescent detection was performed using SuperSignal™ West Dura Extended Duration Substrate (Product # 34076).



Mesothelin Antibody (MA5-16378) in IHC (P)

Immunohistochemical (Paraffin) analysis of Mesothelin using anti-Mesothelin antibody (Product # MA5-16378) in human mesothelioma.



Immunohistochemistry (Paraffin) (1)

Nature communications	Year 2022
A method for Boolean analysis of protein interactions at a molecular level.	Species Human
"MA5-16378 was used in Immunocytochemistry-immunofluorescence to show that in contrast to proximity ligation assays, MolBoolean simultaneously indicates the relative abundances of protein A and B not interacting with each other, as well as the pool of A and B proteins that are proximal enough to be considered an AB complex."	Dilution 1:50
Authors: Raykova D,Kermpatsou D,Malmqvist T,Harrison PJ,Sander MR,Stiller C,Heldin J,Leino M,Ricardo S,Klemm A,David L,Spjuth O,Vemuri K,Dimberg A,Sundqvist A,Norlin M,Klaesson A,Kampf C,Söderberg O	

For Research Use Only. Not for use in diagnostic procedures. Not for resale without express authorization. Products are warranted to operate or perform substantially in conformance with published Product specifications in effect at the time of sale, as set forth in the Production documentation, specifications and/or accompanying package inserts ("Documentation"). No claim of suitability for use in applications regulated by FDA is made. The warranty provided herein is valid only when used by properly trained individuals. Unless otherwise stated in the Documentation, this warranty is limited to one year from date of shipment when the Product is subjected to normal, proper and intended usage. This warranty does not extend to anyone other than the Buyer. Any model or sample furnished to Buyer is merely illustrative of the general type and quality of goods and does not represent that any Product will conform to such model or sample. NO OTHER WARRANTIES, EXPRESS OR IMPLIED, ARE GRANTED INCLUDING WITHOUT LIMITATION, IMPLIED WARRANTIES OF MERCHANTABILITY, FITNESS FOR ANY PARTICULAR PURPOSE, OR NON INFRINGEMENT. BUYER'S EXCLUSIVE REMEDY FOR NON-CONFORMING PRODUCTS DURING THE WARRANTY PERIOD IS LIMITED TO REPAIR, REPLACEMENT OF OR REFUND FOR THE NON-CONFORMING PRODUCT(S) AT SELLER'S SOLE OPTION. THERE IS NO OBLIGATION TO REPAIR, REPLACE OR REFUND FOR PRODUCTS AS THE RESULT OF (I) ACCIDENT, DISASTER OR EVENT OF FORCE MAJEURE, (II) MISUSE, FAULT OR NEGLIGENCE OF OR BY BUYER, (III) USE OF THE PRODUCTS IN A MANNER FOR WHICH THEY WERE NOT DESIGNED, OR (IV) IMPROPER STORAGE AND HANDLING OF THE PRODUCTS. Unless otherwise expressly stated on the Product or in the documentation accompanying the Product, the Product is intended for research only and is not to be used for any other purpose, including without limitation, unauthorized commercial uses, in vitro diagnostic uses, ex vivo or in vivo therapeutic uses, or any type of consumption by or application to human or animals.