

Placental Alkaline Phosphatase Recombinant Rabbit Monoclonal Antibody (SP15)

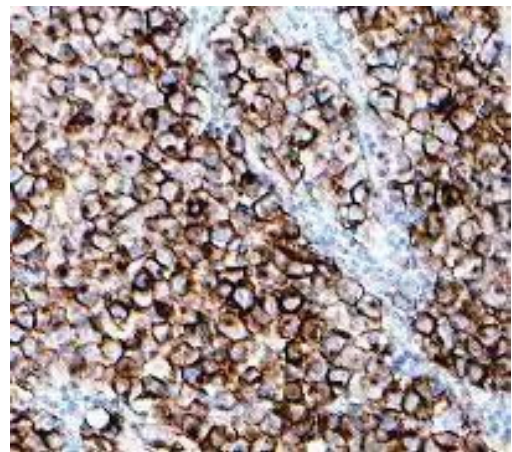
Product Details	
Size	500 µL
Species Reactivity	Human
Published Species	Human
Host/Isotype	Rabbit / IgG
Expression system	proprietary
Class	Recombinant Monoclonal
Type	Antibody
Clone	SP15
Conjugate	Unconjugated
Immunogen	Recombinant protein encoding human placental alkaline phosphatase.
Form	Liquid
Concentration	0.021 mg/mL
Purification	Protein A
Storage buffer	PBS, pH 7.2, with 1% BSA
Contains	0.1% sodium azide
Storage conditions	Store at 4°C short term. For long term storage, store at -20°C, avoiding freeze/thaw cycles.
RRID	AB_2537911

Applications	Tested Dilution	Publications
Immunohistochemistry (IHC)	-	1 Publication
Immunohistochemistry (Paraffin) (IHC (P))	1:100	-
Flow Cytometry (Flow)	1:200	-

Product Specific Information

Heat-mediated antigen retrieval is recommended prior to staining, using a 10mM citrate buffer, pH 6.0, for 10 minutes followed by cooling at room temperature for 20 min. Following antigen retrieval, incubate samples with primary antibody for 30 min at room temperature. A suggested positive control is seminoma or placenta tissue.

Product Images For Placental Alkaline Phosphatase Recombinant Rabbit Monoclonal Antibody (SP15)



Placental Alkaline Phosphatase Antibody (MA5-16392) in IHC (P)
Immunohistochemical (Paraffin) analysis of PLAP using anti-PLAP antibody (Product # MA5-16392) in human seminoma tissue at a dilution of 1:50.

1 Reference

Immunohistochemistry (1)

Virchows Archiv : an international journal of pathology	Year 2009
Pulmonary histiocytic sarcoma mimicking pulmonary Langerhans cell histiocytosis in a young adult presenting with spontaneous pneumothorax: a potential diagnostic pitfall.	Species Human
"MA5-16392 was used in immunohistochemistry to report on a case of pulmonary histiocytic sarcoma mimicking pulmonary Langerhans cell histiocytosis"	Dilution 1:50
Authors: Stacher E,Beham-Schmid C,Terpe HJ,Simiantonaki N,Popper HH	

For Research Use Only. Not for use in diagnostic procedures. Not for resale without express authorization. Products are warranted to operate or perform substantially in conformance with published Product specifications in effect at the time of sale, as set forth in the Production documentation, specifications and/or accompanying package inserts ("Documentation"). No claim of suitability for use in applications regulated by FDA is made. The warranty provided herein is valid only when used by properly trained individuals. Unless otherwise stated in the Documentation, this warranty is limited to one year from date of shipment when the Product is subjected to normal, proper and intended usage. This warranty does not extend to anyone other than the Buyer. Any model or sample furnished to Buyer is merely illustrative of the general type and quality of goods and does not represent that any Product will conform to such model or sample. NO OTHER WARRANTIES, EXPRESS OR IMPLIED, ARE GRANTED INCLUDING WITHOUT LIMITATION, IMPLIED WARRANTIES OF MERCHANTABILITY, FITNESS FOR ANY PARTICULAR PURPOSE, OR NON INFRINGEMENT. BUYER'S EXCLUSIVE REMEDY FOR NON-CONFORMING PRODUCTS DURING THE WARRANTY PERIOD IS LIMITED TO REPAIR, REPLACEMENT OF OR REFUND FOR THE NON-CONFORMING PRODUCT(S) AT SELLER'S SOLE OPTION. THERE IS NO OBLIGATION TO REPAIR, REPLACE OR REFUND FOR PRODUCTS AS THE RESULT OF (i) ACCIDENT, DISASTER OR EVENT OF FORCE MAJEURE, (ii) MISUSE, FAULT OR NEGLIGENCE OF OR BY BUYER, (iii) USE OF THE PRODUCTS IN A MANNER FOR WHICH THEY WERE NOT DESIGNED, OR (iv) IMPROPER STORAGE AND HANDLING OF THE PRODUCTS. Unless otherwise expressly stated on the Product or in the documentation accompanying the Product, the Product is intended for research only and is not to be used for any other purpose, including without limitation, unauthorized commercial uses, in vitro diagnostic uses, ex vivo or in vivo therapeutic uses, or any type of consumption by or application to human or animals.