

# Progesterone Receptor Monoclonal Antibody (SP42)

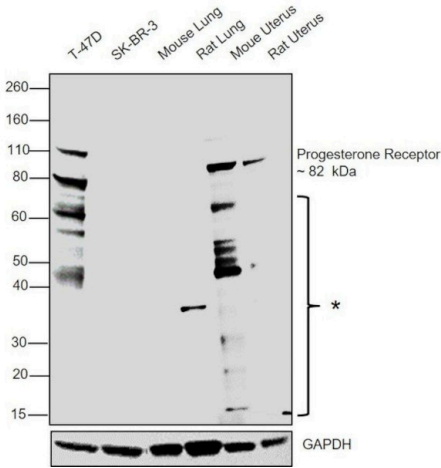
Product Details	
Size	500 µL
Species Reactivity	Human
Host/Isotype	Rabbit / IgG
Class	Monoclonal
Type	Antibody
Clone	SP42
Conjugate	Unconjugated
Immunogen	Recombinant protein encoding human progesterone receptor 412-526 aa
Form	Liquid
Purification	Protein A/G
Storage buffer	PBS, pH 7.6, with 1% BSA
Contains	0.1% sodium azide
Storage conditions	-20° C, Avoid Freeze/Thaw Cycles
RRID	AB_2537913

Applications	Tested Dilution	Publications
Western Blot (WB)	1:1,000	-
Immunohistochemistry (Paraffin) (IHC (P))	1:400	-
Immunocytochemistry (ICC/IF)	1:100	-
Flow Cytometry (Flow)	1:260	-

## Product Specific Information

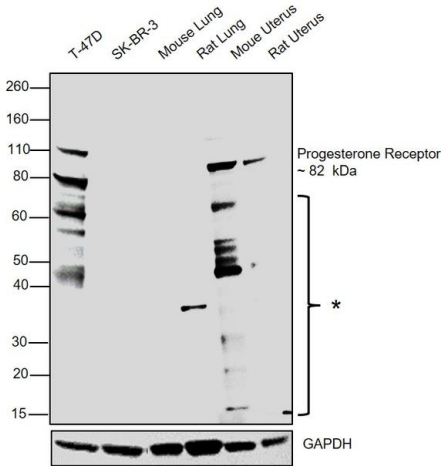
Heat-mediated antigen retrieval is recommended prior to staining, using a 10mM citrate buffer, pH 6.0, for 10 minutes followed by cooling at room temperature for 20 min. Following antigen retrieval, incubate samples with primary antibody for 30 min at room temperature. A suggested positive control is breast carcinoma.

Product Images For Progesterone Receptor Monoclonal Antibody (SP42)



Progesterone Receptor Antibody (MA5-16394)

Antibody specificity was demonstrated by detection of differential basal expression of the target across cell lines tested owing to their inherent genetic constitution. Relative expression of Progesterone Receptor was observed in T 47D, Mouse Uterus and Rat Uterus in comparison to SK-BR-3, Mouse Lung and Rat Lung using Progesterone Receptor Monoclonal Antibody (Product # MA5-16394) in Western Blot. {RE}

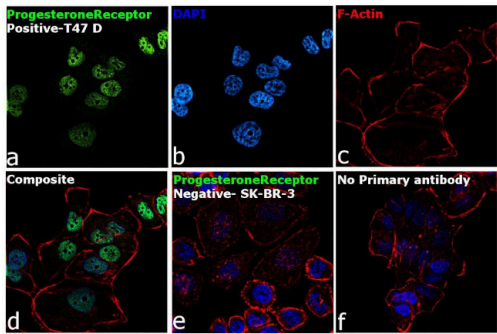


Progesterone Receptor Antibody (MA5-16394) in WB

Western blot was performed using Anti-Progesterone Receptor Monoclonal Antibody (Product # MA5-16394) and a ~110 kDa and ~82 kDa band corresponding to Progesterone Receptor was observed in T-47D and uterus tissue. Additional un-characterized bands (\*) were also observed. Whole cell extracts (30 µg lysate) of T-47D (Lane 1), SK-BR-3 (Lane 2), Mouse Lung (Lane 3), Rat Lung (Lane 4), Mouse Uterus (Lane 5) and Rat Uterus (Lane 6) were electrophoresed using Novex® NuPAGE® 4-12 % Bis-Tris gel (Product # NP0322BOX). Resolved proteins were then transferred onto a nitrocellulose membrane (Product # IB23001) by iBlot® 2 Dry Blotting System (Product # IB21001). The blot was probed with the primary antibody (1:2,000 dilution) and detected by chemiluminescence with Goat anti-Rabbit IgG (Heavy Chain) Superclonal™ Recombinant Secondary Antibody, HRP (Product # A27036, 1: 4,000 dilution) using the iBright FL 1000 (Product # A32752). Chemiluminescent detection was performed using Novex® ECL Chemiluminescent Substrate Reagent Kit (Product # WP20005).

Progesterone Receptor Antibody (MA5-16394) in ICC/IF

Immunofluorescence analysis of Progesterone Receptor was performed using 70% confluent log phase T-47D cells. The cells were fixed with 4% paraformaldehyde for 10 minutes, permeabilized with 0.1% Triton™ X-100 for 10 minutes, and blocked with 2% BSA for 1 hour at room temperature. The cells were labeled with Progesterone Receptor Monoclonal Antibody (Product # MA5-16394) at 1:100 dilution in 0.1% BSA, incubated at 4 degree celsius overnight and then with Goat anti-Rabbit IgG (H+L) Highly Cross-Adsorbed Secondary Antibody, Alexa Fluor Plus 488 (Product # A32731) at a dilution of 1:2000 for 45 minutes at room temperature (Panel a: green). Nuclei (Panel b: blue) were stained with ProLong™ Diamond Antifade Mountant with DAPI (Product # P36962). F-actin (Panel c: red) was stained with Rhodamine Phalloidin (Product # R415, 1:300). Panel d represents the merged image showing nuclear localization. Panel e represents SK-BR-3 cells having no expression of Progesterone Receptor. Panel f represents control cells with no primary antibody to assess background. The images were captured at 60X magnification.



View more figures on [thermofisher.cn](http://thermofisher.cn)

For Research Use Only. Not for use in diagnostic procedures. Not for resale without express authorization. Products are warranted to operate or perform substantially in conformance with published Product specifications in effect at the time of sale, as set forth in the Production documentation, specifications and/or accompanying package inserts ("Documentation"). No claim of suitability for use in applications regulated by FDA is made. The warranty provided herein is valid only when used by properly trained individuals. Unless otherwise stated in the Documentation, this warranty is limited to one year from date of shipment when the Product is subjected to normal, proper and intended usage. This warranty does not extend to anyone other than the Buyer. Any model or sample furnished to Buyer is merely illustrative of the general type and quality of goods and does not represent that any Product will conform to such model or sample. NO OTHER WARRANTIES, EXPRESS OR IMPLIED, ARE GRANTED INCLUDING WITHOUT LIMITATION, IMPLIED WARRANTIES OF MERCHANTABILITY, FITNESS FOR ANY PARTICULAR PURPOSE, OR NON-INFRINGEMENT. BUYER'S EXCLUSIVE REMEDY FOR NON-CONFORMING PRODUCTS DURING THE WARRANTY PERIOD IS LIMITED TO REPAIR, REPLACEMENT OF OR REFUND FOR THE NON-CONFORMING PRODUCT(S) AT SELLER'S SOLE OPTION. THERE IS NO OBLIGATION TO REPAIR, REPLACE OR REFUND FOR PRODUCTS AS THE RESULT OF (i) ACCIDENT, DISASTER OR EVENT OF FORCE MAJEURE, (ii) MISUSE, FAULT OR NEGLIGENCE OF OR BY BUYER, (iii) USE OF THE PRODUCTS IN A MANNER FOR WHICH THEY WERE NOT DESIGNED, OR (iv) IMPROPER STORAGE AND HANDLING OF THE PRODUCTS. Unless otherwise expressly stated on the Product or in the documentation accompanying the Product, the Product is intended for research only and is not to be used for any other purpose, including without limitation, unauthorized commercial uses, in vitro diagnostic uses, ex vivo or in vivo therapeutic uses, or any type of consumption by or application to human or animals.