

Synaptophysin Monoclonal Antibody (SP11)

Product Details

Size	500 µL
Species Reactivity	Human, Mouse, Rat
Published Species	Human, Mouse
Host/Isotype	Rabbit / IgG
Class	Monoclonal
Type	Antibody
Clone	SP11
Conjugate	Unconjugated
Immunogen	Synthetic peptide corresponding to C-terminus of human synaptophysin.
Form	Liquid
Concentration	Conc. Not Determined
Storage buffer	tissue culture supernatant/TBS, pH 7.5, with 1% BSA
Contains	0.1% sodium azide
Storage conditions	-20°C or -80°C if preferred
RRID	AB_2537921

Applications	Tested Dilution	Publications
Western Blot (WB)	1:200	4 Publications
Immunohistochemistry (IHC)	-	28 Publications
Immunohistochemistry (Paraffin) (IHC (P))	1:200	3 Publications
Immunohistochemistry (Frozen) (IHC (F))	1:200	1 Publication
Immunocytochemistry (ICC/IF)	5 µg/mL	2 Publications
Miscellaneous PubMed (Misc)	-	3 Publications

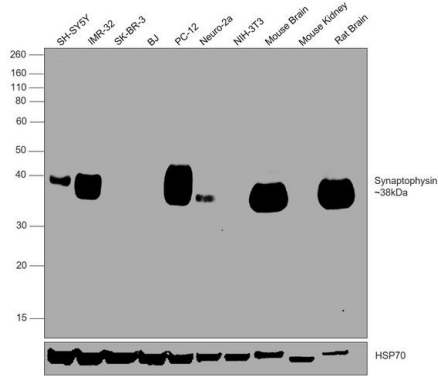
Product Specific Information

Heat-mediated antigen retrieval is recommended prior to staining, using a 10mM citrate buffer, pH 6.0, for 10 minutes followed by cooling at room temperature for 20 min. Following antigen retrieval, incubate samples with primary antibody for 30 min at room temperature. A suggested positive control is pancreas or neuroendocrine tumor.

Product Images For Synaptophysin Monoclonal Antibody (SP11)

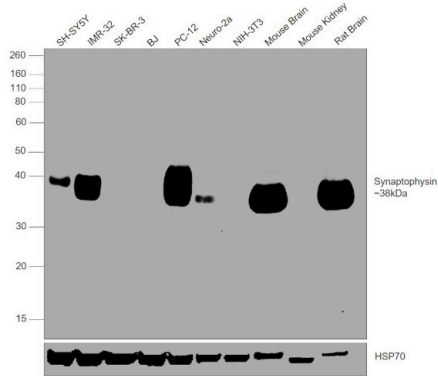
Synaptophysin Antibody (MA5-16402) in WB

Western blot was performed using Anti-Synaptophysin Monoclonal Antibody (SP11) (Product # MA1-39558, MA5-16402) and a 38kDa band corresponding to Synaptophysin was observed in SH-SY5Y, IMR-32, PC-12, Neuro-2a, Mouse Brain and Rat Brain, but not in SK-BR-3, BJ, NIH-3T3 and Mouse Kidney. Whole cell extracts (30 µg lysate) of SH-SY5Y (Lane 1), IMR-32 (Lane 2), SK-BR-3 (Lane 3), BJ (Lane 4), PC-12 (Lane 5), Neuro-2a (Lane 6), NIH-3T3 (Lane 7), Mouse Brain (Lane 8), Mouse Kidney (Lane 9), Rat Brain (Lane 10) were electrophoresed using NuPAGE™ 10% Bis-Tris Protein Gel (Product # NP0302BOX). Resolved proteins were then transferred onto a nitrocellulose membrane (Product # IB23001) by iBlot® 2 Dry Blotting System (Product # IB21001). The blot was probed with the primary antibody (1:200 dilution) and detected by chemiluminescence with Goat anti-Rabbit IgG (Heavy Chain) Superclonal™ Recombinant Secondary Antibody, HRP (Product # A27036, 1:4000 dilution) using the iBright FL 1000 (Product # A32752). Chemiluminescent detection was performed using Novex® ECL Chemiluminescent Substrate Reagent Kit (Product # WP20005).



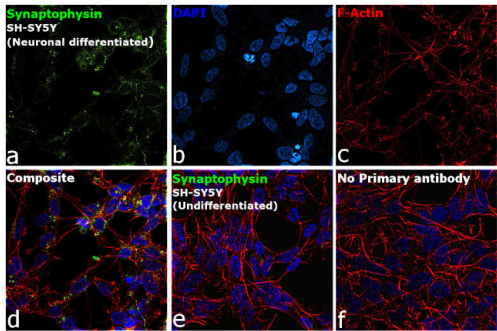
Synaptophysin Antibody (MA5-16402)

Antibody specificity was demonstrated by detection of differential basal expression of the target across the tested cell lines and tissues owing to their inherent genetic constitution. Relative expression of Synaptophysin was observed in SH-SY5Y, IMR-32, PC-12, Neuro-2a, Mouse Brain and Rat Brain, but not in SK-BR-3, BJ, NIH-3T3 and Mouse Kidney using Anti-Synaptophysin Monoclonal Antibody (SP11) (Product # MA1-39558, MA5-16402) in Western Blot. {RE}



Synaptophysin Antibody (MA5-16402)

Antibody specificity was demonstrated by detection of differential basal expression of the target across cell models owing to their inherent genetic constitution. Immunofluorescence analysis using Anti-Synaptophysin Monoclonal Antibody (SP11) (Product # MA1-39558, MA5-16402), shows an increase in expression of Synaptophysin upon neuronal differentiation of SH-SY5Y cells. {RE}



View more figures on thermofisher.cn

Western Blot (4)

<p>Carcinogenesis</p> <p>MUC1-C dictates neuroendocrine lineage specification in pancreatic ductal adenocarcinomas.</p> <p>"Published figure using Synaptophysin monoclonal antibody (Product # MA5-16402) in Western Blot"</p> <p>Authors: Luan Z,Morimoto Y,Fushimi A,Yamashita N,Suo W,Bhattacharya A,Hagiwara M,Jin C,Kufe D</p>	<p>Year</p> <p>2022</p> <p>Species</p> <p>Human</p> <p>Dilution</p> <p>1:200</p>
<p>EMBO molecular medicine</p> <p>Synaptic dysfunction induced by glycine-alanine dipeptides in C9orf72-ALS/FTD is rescued by SV2 replenishment.</p> <p>"Published figure using Synaptophysin monoclonal antibody (Product # MA5-16402) in Immunocytochemistry"</p> <p>Authors: Jensen BK,Schuldi MH,McAvoy K,Russell KA,Boehringer A,Curran BM,Krishnamurthy K,Wen X,Westergard T, Ma L,Haeusler AR,Edbauer D,Pasinelli P,Trotti D</p>	<p>Year</p> <p>2020</p> <p>Species</p> <p>Mouse</p> <p>Dilution</p> <p>1:200</p>

[View more WB references on thermofisher.cn](#)

Immunohistochemistry (28)

<p>Case reports in pathology</p> <p>A Previously Undescribed Presentation of Mixed Adenoneuroendocrine Carcinoma.</p> <p>"MA516402 was used in immunohistochemistry to discuss a case of mixed adenoneuroendocrine carcinoma of stomach with tubular adenoma and well-differentiated neuroendocrine tumor in the primary tumor in the stomach"</p> <p>Authors: De Luca-Johnson J,Zenali M</p>	<p>Year</p> <p>2022</p> <p>Species</p> <p>Human</p>
<p>Cell systems</p> <p>Mapping Complex Traits in a Diversity Outbred F1 Mouse Population Identifies Germline Modifiers of Metastasis in Human Prostate Cancer.</p> <p>"Published figure using Synaptophysin monoclonal antibody (Product # MA5-16402) in Immunohistochemistry"</p> <p>Authors: Winter JM,Gildea DE,Andreas JP,Gatti DM,Williams KA,Lee M,Hu Y,Zhang S,Mullikin JC,Wolfsberg TG, McDonnell SK,Fogarty ZC,Larson MC,French AJ,Schaid DJ,Thibodeau SN,Churchill GA,Crawford NP</p>	<p>Year</p> <p>2017</p> <p>Species</p> <p>Human</p> <p>Dilution</p> <p>1:1500</p>

[View more IHC references on thermofisher.cn](#)

More applications with references on thermofisher.cn

- IHC (P) (3)
- IHC (F) (1)
- ICC/IF (2)
- Misc (3)

For Research Use Only. Not for use in diagnostic procedures. Not for resale without express authorization. Products are warranted to operate or perform substantially in conformance with published Product specifications in effect at the time of sale, as set forth in the Production documentation, specifications and/or accompanying package inserts ("Documentation"). No claim of suitability for use in applications regulated by FDA is made. The warranty provided herein is valid only when used by properly trained individuals. Unless otherwise stated in the Documentation, this warranty is limited to one year from date of shipment when the Product is subjected to normal, proper and intended usage. This warranty does not extend to anyone other than the Buyer. Any model or sample furnished to Buyer is merely illustrative of the general type and quality of goods and does not represent that any Product will conform to such model or sample. NO OTHER WARRANTIES, EXPRESS OR IMPLIED, ARE GRANTED INCLUDING WITHOUT LIMITATION, IMPLIED WARRANTIES OF MERCHANTABILITY, FITNESS FOR ANY PARTICULAR PURPOSE, OR NON-INFRINGEMENT. BUYER'S EXCLUSIVE REMEDY FOR NON-CONFORMING PRODUCTS DURING THE WARRANTY PERIOD IS LIMITED TO REPAIR, REPLACEMENT OF OR REFUND FOR THE NON-CONFORMING PRODUCT(S) AT SELLER'S SOLE OPTION. THERE IS NO OBLIGATION TO REPAIR, REPLACE OR REFUND FOR PRODUCTS AS THE RESULT OF (i) ACCIDENT, DISASTER OR EVENT OF FORCE MAJEURE, (ii) MISUSE, FAULT OR NEGLIGENCE OF OR BY BUYER, (iii) USE OF THE PRODUCTS IN A MANNER FOR WHICH THEY WERE NOT DESIGNED, OR (iv) IMPROPER STORAGE AND HANDLING OF THE PRODUCTS. Unless otherwise expressly stated on the Product or in the documentation accompanying the Product, the Product is intended for research only and is not to be used for any other purpose, including without limitation, unauthorized commercial uses, in vitro diagnostic uses, ex vivo or in vivo therapeutic uses, or any type of consumption by or application to human or animals.