

CD9 Monoclonal Antibody (MM2/57), FITC

Product Details	
Size	100 µg
Species Reactivity	Bovine, Dog, Camelid, Horse, Cat, Ferret, Human, Mink, Pig, Rabbit, Rhesus monkey
Host/Isotype	Mouse / IgG2b
Class	Monoclonal
Type	Antibody
Clone	MM2/57
Conjugate	FITC
Excitation/Emission Max	498/517 nm
Immunogen	Human platelet membrane
Form	Liquid
Concentration	0.1 mg/mL
Purification	Protein A
Storage buffer	PBS with 1% BSA
Contains	0.09% sodium azide
Storage conditions	Store at 4°C short term. For long term storage, store at -20°C, avoiding freeze/thaw cycles. Store in the dark.
RRID	AB_2538339

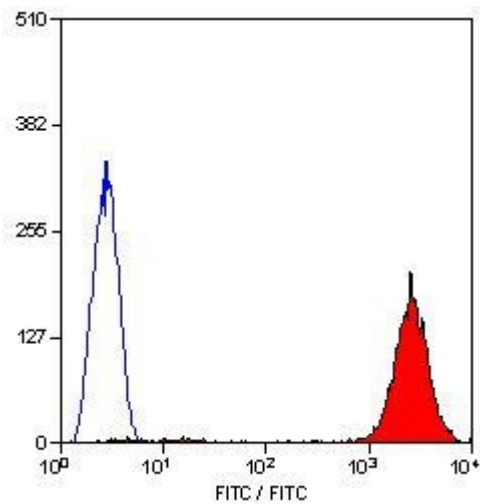
Applications	Tested Dilution	Publications
Immunocytochemistry (ICC/IF)	-	1 Publication
Flow Cytometry (Flow)	Neat	-

Product Specific Information

Predicted to react with mustelid based on sequence homology.

For FACS analysis, use 10 µL of the suggested working dilution to label 1x10^6 cells in 100 µL.

Product Images For CD9 Monoclonal Antibody (MM2/57), FITC



CD9 Antibody (MA5-16860) in Flow
Flow cytometric analysis of human peripheral blood platelets with Mouse anti Human CD9 conjugated to FITC (Product # MA5-16860).

1 Reference

Immunocytochemistry (1)

Cancer research	Year
CD151 accelerates breast cancer by regulating alpha 6 integrin function, signaling, and molecular organization.	2008
"MA5-16860 was used in immunocytochemistry to determine the contribution of CD151 on breast cancer"	
Authors: Yang XH,Richardson AL,Torres-Arzayus MI,Zhou P,Sharma C,Kazarov AR,Andzelm MM,Strominger JL,Brown M,Hemler ME	

For Research Use Only. Not for use in diagnostic procedures. Not for resale without express authorization. Products are warranted to operate or perform substantially in conformance with published Product specifications in effect at the time of sale, as set forth in the Production documentation, specifications and/or accompanying package inserts ("Documentation"). No claim of suitability for use in applications regulated by FDA is made. The warranty provided herein is valid only when used by properly trained individuals. Unless otherwise stated in the Documentation, this warranty is limited to one year from date of shipment when the Product is subjected to normal, proper and intended usage. This warranty does not extend to anyone other than the Buyer. Any model or sample furnished to Buyer is merely illustrative of the general type and quality of goods and does not represent that any Product will conform to such model or sample. NO OTHER WARRANTIES, EXPRESS OR IMPLIED, ARE GRANTED INCLUDING WITHOUT LIMITATION, IMPLIED WARRANTIES OF MERCHANTABILITY, FITNESS FOR ANY PARTICULAR PURPOSE, OR NON INFRINGEMENT. BUYER'S EXCLUSIVE REMEDY FOR NON-CONFORMING PRODUCTS DURING THE WARRANTY PERIOD IS LIMITED TO REPAIR, REPLACEMENT OF OR REFUND FOR THE NON-CONFORMING PRODUCT(S) AT SELLER'S SOLE OPTION. THERE IS NO OBLIGATION TO REPAIR, REPLACE OR REFUND FOR PRODUCTS AS THE RESULT OF (i) ACCIDENT, DISASTER OR EVENT OF FORCE MAJEURE, (ii) MISUSE, FAULT OR NEGLIGENCE OF OR BY BUYER, (iii) USE OF THE PRODUCTS IN A MANNER FOR WHICH THEY WERE NOT DESIGNED, OR (iv) IMPROPER STORAGE AND HANDLING OF THE PRODUCTS. Unless otherwise expressly stated on the Product or in the documentation accompanying the Product, the Product is intended for research only and is not to be used for any other purpose, including without limitation, unauthorized commercial uses, in vitro diagnostic uses, ex vivo or in vivo therapeutic uses, or any type of consumption by or application to human or animals.