

# CD163 Monoclonal Antibody (GHI/61)

Product Details	
Size	200 µg
Species Reactivity	Human
Published Species	Human
Host/Isotype	Mouse / IgG1, kappa
Class	Monoclonal
Type	Antibody
Clone	GHI/61
Conjugate	Unconjugated
Immunogen	Mouse monoclonal antibodies raised against human CD163.
Form	Liquid
Concentration	1 mg/mL
Purification	Protein G
Storage buffer	PBS
Contains	0.02% sodium azide
Storage conditions	Store at 4°C short term. For long term storage, store at -20°C, avoiding freeze/thaw cycles.
RRID	AB_2539106

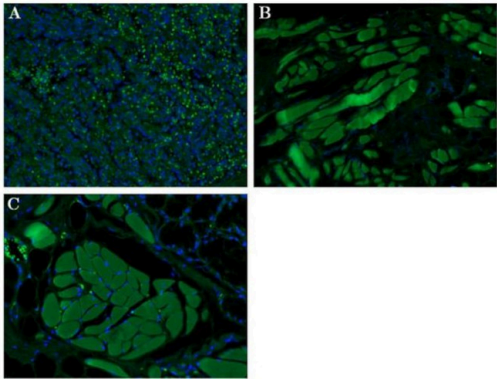
Applications	Tested Dilution	Publications
Western Blot (WB)	Assay-dependent	-
Immunohistochemistry (IHC)	-	1 Publication
Immunohistochemistry (Paraffin) (IHC (P))	1:500	-
Immunohistochemistry (Frozen) (IHC (F))	Assay-dependent	-
Flow Cytometry (Flow)	Assay-dependent	-
Immunoprecipitation (IP)	Assay-dependent	-

## Product Specific Information

MA5-17716 targets CD163/M130 in FACS, IHC (F), IP, and WB applications and shows reactivity with Human samples.

The MA5-17716 immunogen is mouse monoclonal antibodies raised against human CD163.

Product Images For CD163 Monoclonal Antibody (GHI/61)



**CD163 Antibody (MA5-17716) in IHC (P)**  
Immunohistochemical staining of paraformaldehyde-fixed paraffin-embedded human spleen sections at 400x magnification (A) and human tonsil sections at 200x (B) 400x (C) magnification with DAPI counterstain. Primary antibody used was a CD163/M130 monoclonal antibody (clone GHI/61) at a 1:500 dilution, followed by secondary antibody was a 488 fluorescent conjugated Goat anti-mouse Ig at a 1:500 dilution and Normal Goat Serum (blocking)

1 Reference

Immunohistochemistry (1)

Frontiers in neurology	Year 2023
Age-Related Changes in Immune Cells of the Human Cochlea.	Species Human
"MA5-17716 was used in Immunohistochemistry to study how macrophage populations and their functionally driven morphological characteristics change with age in the human cochlea."	Dilution 1:200
Authors: Noble KV,Liu T,Matthews LJ,Schulte BA,Lang H	

For Research Use Only. Not for use in diagnostic procedures. Not for resale without express authorization. Products are warranted to operate or perform substantially in conformance with published Product specifications in effect at the time of sale, as set forth in the Production documentation, specifications and/or accompanying package inserts ("Documentation"). No claim of suitability for use in applications regulated by FDA is made. The warranty provided herein is valid only when used by properly trained individuals. Unless otherwise stated in the Documentation, this warranty is limited to one year from date of shipment when the Product is subjected to normal, proper and intended usage. This warranty does not extend to anyone other than the Buyer. Any model or sample furnished to Buyer is merely illustrative of the general type and quality of goods and does not represent that any Product will conform to such model or sample. NO OTHER WARRANTIES, EXPRESS OR IMPLIED, ARE GRANTED INCLUDING WITHOUT LIMITATION, IMPLIED WARRANTIES OF MERCHANTABILITY, FITNESS FOR ANY PARTICULAR PURPOSE, OR NON-INFRINGEMENT. BUYER'S EXCLUSIVE REMEDY FOR NON-CONFORMING PRODUCTS DURING THE WARRANTY PERIOD IS LIMITED TO REPAIR, REPLACEMENT OF OR REFUND FOR THE NON-CONFORMING PRODUCT(S) AT SELLER'S SOLE OPTION. THERE IS NO OBLIGATION TO REPAIR, REPLACE OR REFUND FOR PRODUCTS AS THE RESULT OF (I) ACCIDENT, DISASTER OR EVENT OF FORCE MAJEURE, (II) MISUSE, FAULT OR NEGLIGENCE OF OR BY BUYER, (III) USE OF THE PRODUCTS IN A MANNER FOR WHICH THEY WERE NOT DESIGNED, OR (IV) IMPROPER STORAGE AND HANDLING OF THE PRODUCTS. Unless otherwise expressly stated on the Product or in the documentation accompanying the Product, the Product is intended for research only and is not to be used for any other purpose, including without limitation, unauthorized commercial uses, in vitro diagnostic uses, ex vivo or in vivo therapeutic uses, or any type of consumption by or application to human or animals.