

HLA-DR Monoclonal Antibody (YD1/63.4.10), Biotin

Product Details	
Size	100 µg
Species Reactivity	Human
Published Species	Human
Host/Isotype	Rat / IgG2a
Class	Monoclonal
Type	Antibody
Clone	YD1/63.4.10
Conjugate	Biotin
Immunogen	DAUDI cells
Form	Liquid
Concentration	0.1 mg/mL
Purification	Protein G
Storage buffer	PBS with 4-5mg/mL BSA
Contains	0.02% sodium azide
Storage conditions	Store at 4°C short term. For long term storage, store at -20°C, avoiding freeze/thaw cycles.
RRID	AB_2539404

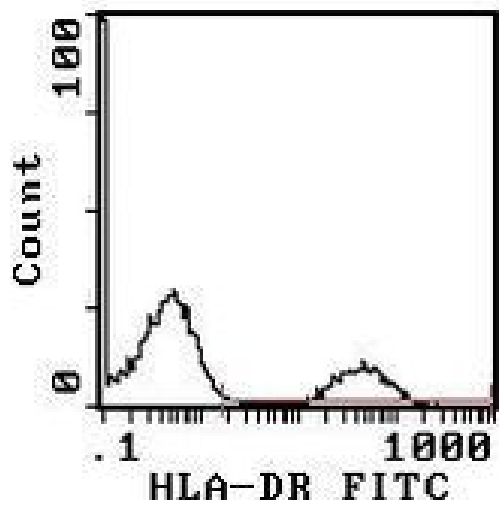
Applications	Tested Dilution	Publications
Flow Cytometry (Flow)	0.5 µg/1x10 ⁶ cells	1 Publication

Product Specific Information

MA5-18020 targets HLA-DR in FACS applications and shows reactivity with Human samples.

The MA5-18020 immunogen is dAUDI cells.

Product Images For HLA-DR Monoclonal Antibody (YD1/63.4.10), Biotin



HLA-DR Antibody (MA5-18020) in Flow
Flow cytometric analysis of Peripheral Blood Lymphocytes staining using anti-HLA-DR Monoclonal Antibody (Product # MA5-18020) at a 0.5 µg/10⁶ cells dilution. The Isotypic control was a Biotin Rat IgG2a

1 Reference

Flow Cytometry (1)

iScience	Year 2022
Single-cell RNA sequencing reveals different signatures of mesenchymal stromal cell pluripotent-like and multipotent populations.	Species Human
"MA5-18020 was used in Flow cytometry/Cell sorting to evaluate the differentiation ability of BM-MSC subpopulations and provide intriguing insights for understanding stemness."	Dilution 1:400
Authors: Oguma Y,Kuroda Y,Wakao S,Kushida Y,Dezawa M	

For Research Use Only. Not for use in diagnostic procedures. Not for resale without express authorization. Products are warranted to operate or perform substantially in conformance with published Product specifications in effect at the time of sale, as set forth in the Production documentation, specifications and/or accompanying package inserts ("Documentation"). No claim of suitability for use in applications regulated by FDA is made. The warranty provided herein is valid only when used by properly trained individuals. Unless otherwise stated in the Documentation, this warranty is limited to one year from date of shipment when the Product is subjected to normal, proper and intended usage. This warranty does not extend to anyone other than the Buyer. Any model or sample furnished to Buyer is merely illustrative of the general type and quality of goods and does not represent that any Product will conform to such model or sample. NO OTHER WARRANTIES, EXPRESS OR IMPLIED, ARE GRANTED INCLUDING WITHOUT LIMITATION, IMPLIED WARRANTIES OF MERCHANTABILITY, FITNESS FOR ANY PARTICULAR PURPOSE, OR NON INFRINGEMENT. BUYER'S EXCLUSIVE REMEDY FOR NON-CONFORMING PRODUCTS DURING THE WARRANTY PERIOD IS LIMITED TO REPAIR, REPLACEMENT OF OR REFUND FOR THE NON-CONFORMING PRODUCT(S) AT SELLER'S SOLE OPTION. THERE IS NO OBLIGATION TO REPAIR, REPLACE OR REFUND FOR PRODUCTS AS THE RESULT OF (I) ACCIDENT, DISASTER OR EVENT OF FORCE MAJEURE, (II) MISUSE, FAULT OR NEGLIGENCE OF OR BY BUYER, (III) USE OF THE PRODUCTS IN A MANNER FOR WHICH THEY WERE NOT DESIGNED, OR (IV) IMPROPER STORAGE AND HANDLING OF THE PRODUCTS. Unless otherwise expressly stated on the Product or in the documentation accompanying the Product, the Product is intended for research only and is not to be used for any other purpose, including without limitation, unauthorized commercial uses, in vitro diagnostic uses, ex vivo or in vivo therapeutic uses, or any type of consumption by or application to human or animals.