

H4K20me3 Monoclonal Antibody (6F8-D9)

Product Details	
Size	100 µL
Species Reactivity	C. elegans, Human
Host/Isotype	Mouse / IgG1
Class	Monoclonal
Type	Antibody
Clone	6F8-D9
Conjugate	Unconjugated
Immunogen	Synthetic peptide of Human Histone H4 (Immunogen sequence: 15-AKRHR(Kme3)VLRDN-25 (branched))
Form	Liquid
Concentration	1 mg/mL
Purification	Protein G
Storage buffer	PBS
Contains	0.1% sodium azide
Storage conditions	Store at 4°C short term. For long term storage, store at -20°C, avoiding freeze/thaw cycles.
RRID	AB_2539457

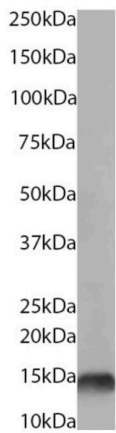
Applications	Tested Dilution	Publications
Western Blot (WB)	1:4,000	-
ELISA (ELISA)	Assay-dependent	-
ChIP assay (ChIP)	Assay-dependent	-
Dot blot (DB)	Assay-dependent	-

Product Specific Information

This antibody shows weak cross-reactivity with K20 di-methylated histone H4, but does not react with histone H3 or mono- or unmethylated K20 histone 4. This antibody is predicted to react with *Xenopus laevis*, *Arabidopsis thaliana*, Fruit fly (*Drosophila melanogaster*), and mammals.

This target has a predicted molecular weight of 11 kDa.

Product Images For H4K20me3 Monoclonal Antibody (6F8-D9)



H4K20me3 Antibody (MA5-18074) in WB

Western blot analysis of H4K20me3 in NIH3T3 cells nuclear lysate (35 µg protein in RIPA buffer). Samples were incubated with H4K20me3 monoclonal antibody (Product # MA5-18074) using a dilution of 1 µg/mL for 1 hour. Detected by chemiluminescence.

For Research Use Only. Not for use in diagnostic procedures. Not for resale without express authorization. Products are warranted to operate or perform substantially in conformance with published Product specifications in effect at the time of sale, as set forth in the Production documentation, specifications and/or accompanying package inserts ("Documentation"). No claim of suitability for use in applications regulated by FDA is made. The warranty provided herein is valid only when used by properly trained individuals. Unless otherwise stated in the Documentation, this warranty is limited to one year from date of shipment when the Product is subjected to normal, proper and intended usage. This warranty does not extend to anyone other than the Buyer. Any model or sample furnished to Buyer is merely illustrative of the general type and quality of goods and does not represent that any Product will conform to such model or sample. NO OTHER WARRANTIES, EXPRESS OR IMPLIED, ARE GRANTED INCLUDING WITHOUT LIMITATION, IMPLIED WARRANTIES OF MERCHANTABILITY, FITNESS FOR ANY PARTICULAR PURPOSE, OR NON INFRINGEMENT. BUYER'S EXCLUSIVE REMEDY FOR NON-CONFORMING PRODUCTS DURING THE WARRANTY PERIOD IS LIMITED TO REPAIR, REPLACEMENT OF OR REFUND FOR THE NON-CONFORMING PRODUCT(S) AT SELLER'S SOLE OPTION. THERE IS NO OBLIGATION TO REPAIR, REPLACE OR REFUND FOR PRODUCTS AS THE RESULT OF (i) ACCIDENT, DISASTER OR EVENT OF FORCE MAJEURE, (ii) MISUSE, FAULT OR NEGLIGENCE OF OR BY BUYER, (iii) USE OF THE PRODUCTS IN A MANNER FOR WHICH THEY WERE NOT DESIGNED, OR (iv) IMPROPER STORAGE AND HANDLING OF THE PRODUCTS. Unless otherwise expressly stated on the Product or in the documentation accompanying the Product, the Product is intended for research only and is not to be used for any other purpose, including without limitation, unauthorized commercial uses, in vitro diagnostic uses, ex vivo or in vivo therapeutic uses, or any type of consumption by or application to human or animals.