

# VSNL1 Monoclonal Antibody (2D11)

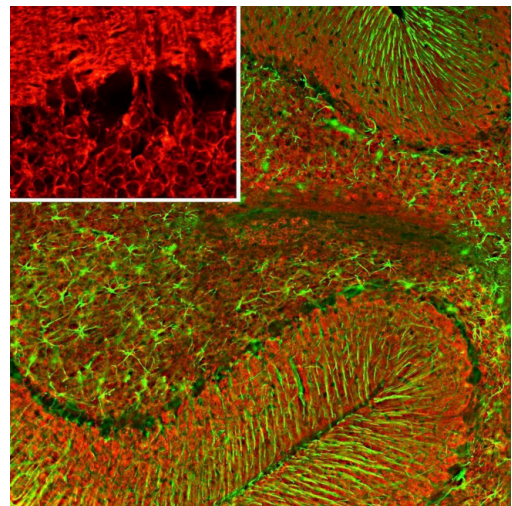
Product Details	
Size	100 µL
Species Reactivity	Human, Mouse, Rat
Host/Isotype	Mouse / IgG1
Class	Monoclonal
Type	Antibody
Clone	2D11
Conjugate	Unconjugated
Immunogen	Recombinant human VSNL1 purified from E. coli
Form	Liquid
Concentration	~1.0 mg/mL
Purification	Protein G
Storage buffer	PBS
Contains	0.01M sodium azide
Storage conditions	-20° C, Avoid Freeze/Thaw Cycles
RRID	AB_2539490

Applications	Tested Dilution	Publications
Western Blot (WB)	1:2,000	-
Immunohistochemistry (IHC)	1:500	-
Immunocytochemistry (ICC/IF)	1:500-1:1,000	-

## Product Specific Information

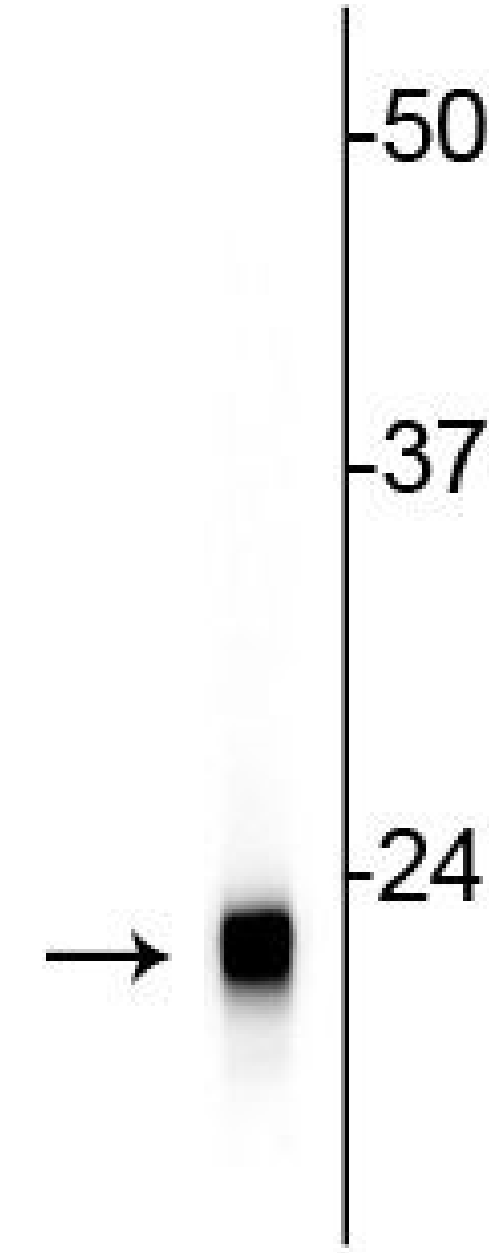
This antibody contains enough material to conduct 10 mini-Western blots.

Product Images For VSNL1 Monoclonal Antibody (2D11)



**VSNL1 Antibody (MA5-18116) in IHC**

Immunohistochemistry analysis of VSNL1 in rat cerebellum labeled with VSNL1 monoclonal antibody (Product # MA5-18116) using a dilution of 1:500 (red) and Anti-GFAP with a dilution of 1:5,000 (green). The VSNL1 reveals protein expressed in the granule cell membranes and in synapses in the white matter and molecular layers while the Anti-GFAP reveals protein expressed in the processes of Bergmann glia and astroglia.



**VSNL1 Antibody (MA5-18116) in WB**

Western blot of VSNL1 in rat cerebellar lysate showing specific immunolabeling of a ~22 kDa band corresponding to VSNL1 monoclonal antibody (Product # MA5-18116).

For Research Use Only. Not for use in diagnostic procedures. Not for resale without express authorization. Products are warranted to operate or perform substantially in conformance with published Product specifications in effect at the time of sale, as set forth in the Production documentation, specifications and/or accompanying package inserts ("Documentation"). No claim of suitability for use in applications regulated by FDA is made. The warranty provided herein is valid only when used by properly trained individuals. Unless otherwise stated in the Documentation, this warranty is limited to one year from date of shipment when the Product is subjected to normal, proper and intended usage. This warranty does not extend to anyone other than the Buyer. Any model or sample furnished to Buyer is merely illustrative of the general type and quality of goods and does not represent that any Product will conform to such model or sample. NO OTHER WARRANTIES, EXPRESS OR IMPLIED, ARE GRANTED INCLUDING WITHOUT LIMITATION, IMPLIED WARRANTIES OF MERCHANTABILITY, FITNESS FOR ANY PARTICULAR PURPOSE, OR NON INFRINGEMENT. BUYER'S EXCLUSIVE REMEDY FOR NON-CONFORMING PRODUCTS DURING THE WARRANTY PERIOD IS LIMITED TO REPAIR, REPLACEMENT OF OR REFUND FOR THE NON-CONFORMING PRODUCT(S) AT SELLER'S SOLE OPTION. THERE IS NO OBLIGATION TO REPAIR, REPLACE OR REFUND FOR PRODUCTS AS THE RESULT OF (I) ACCIDENT, DISASTER OR EVENT OF FORCE MAJEURE, (II) MISUSE, FAULT OR NEGLIGENCE OF OR BY BUYER, (III) USE OF THE PRODUCTS IN A MANNER FOR WHICH THEY WERE NOT DESIGNED, OR (IV) IMPROPER STORAGE AND HANDLING OF THE PRODUCTS. Unless otherwise expressly stated on the Product or in the documentation accompanying the Product, the Product is intended for research only and is not to be used for any other purpose, including without limitation, unauthorized commercial uses, in vitro diagnostic uses, ex vivo or in vivo therapeutic uses, or any type of consumption by or application to human or animals.