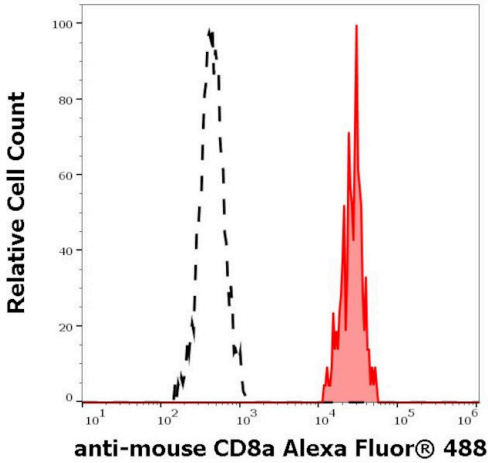


CD8 alpha Monoclonal Antibody (53-6.7), Alexa Fluor™ 488

Product Details	
Size	100 µg
Species Reactivity	Mouse
Host/Isotype	Rat / IgG2a, kappa
Class	Monoclonal
Type	Antibody
Clone	53-6.7
Conjugate	Alexa Fluor™ 488
Excitation/Emission Max	499/520 nm
Immunogen	Mouse spleen cells
Form	Liquid
Concentration	0.5 mg/mL
Purification	Size-exclusion chromatography
Storage buffer	PBS, pH 7.4
Contains	15mM sodium azide
Storage conditions	4° C, store in dark, DO NOT FREEZE!
RRID	AB_2539527

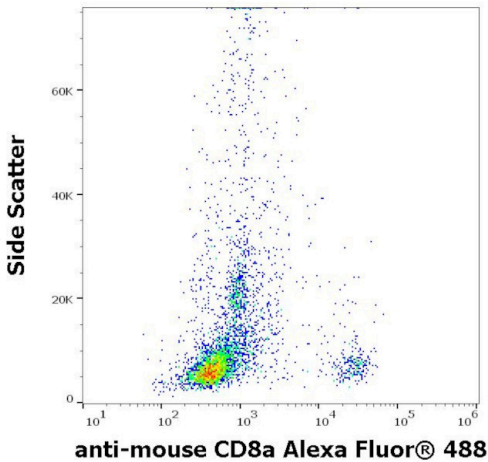
Applications	Tested Dilution	Publications
Immunocytochemistry (ICC/IF)	Assay-dependent	-
Flow Cytometry (Flow)	2 µg/mL	-

Product Images For CD8 alpha Monoclonal Antibody (53-6.7), Alexa Fluor™ 488



CD8 alpha Antibody (MA5-18153) in Flow

Separation of murine CD8a positive splenocytes (red-filled) from CD8a negative splenocytes (black-dashed) in flow cytometry analysis (surface staining) of murine splenocyte suspension stained using anti-mouse CD8a (53-6.7) Alexa Fluor® 488 Monoclonal antibody (Product # MA5-18153), concentration in sample 1 µg/mL.



CD8 alpha Antibody (MA5-18153) in Flow

Flow cytometry surface staining pattern of murine splenocyte suspension stained using anti-mouse CD8a (53-6.7) Alexa Fluor® 488 Monoclonal antibody (Product # MA5-18153), concentration in sample 1 µg/mL.

For Research Use Only. Not for use in diagnostic procedures. Not for resale without express authorization. Products are warranted to operate or perform substantially in conformance with published Product specifications in effect at the time of sale, as set forth in the Production documentation, specifications and/or accompanying package inserts ("Documentation"). No claim of suitability for use in applications regulated by FDA is made. The warranty provided herein is valid only when used by properly trained individuals. Unless otherwise stated in the Documentation, this warranty is limited to one year from date of shipment when the Product is subjected to normal, proper and intended usage. This warranty does not extend to anyone other than the Buyer. Any model or sample furnished to Buyer is merely illustrative of the general type and quality of goods and does not represent that any Product will conform to such model or sample. NO OTHER WARRANTIES, EXPRESS OR IMPLIED, ARE GRANTED INCLUDING WITHOUT LIMITATION, IMPLIED WARRANTIES OF MERCHANTABILITY, FITNESS FOR ANY PARTICULAR PURPOSE, OR NON INFRINGEMENT. BUYER'S EXCLUSIVE REMEDY FOR NON-CONFORMING PRODUCTS DURING THE WARRANTY PERIOD IS LIMITED TO REPAIR, REPLACEMENT OF OR REFUND FOR THE NON-CONFORMING PRODUCT(S) AT SELLER'S SOLE OPTION. THERE IS NO OBLIGATION TO REPAIR, REPLACE OR REFUND FOR PRODUCTS AS THE RESULT OF (I) ACCIDENT, DISASTER OR EVENT OF FORCE MAJEURE, (II) MISUSE, FAULT OR NEGLIGENCE OF OR BY BUYER, (III) USE OF THE PRODUCTS IN A MANNER FOR WHICH THEY WERE NOT DESIGNED, OR (IV) IMPROPER STORAGE AND HANDLING OF THE PRODUCTS. Unless otherwise expressly stated on the Product or in the documentation accompanying the Product, the Product is intended for research only and is not to be used for any other purpose, including without limitation, unauthorized commercial uses, in vitro diagnostic uses, ex vivo or in vivo therapeutic uses, or any type of consumption by or application to human or animals.