

RRBP1 Monoclonal Antibody (P1611)

Product Details	
Size	100 µL
Species Reactivity	Human
Host/Isotype	Mouse / IgG1
Class	Monoclonal
Type	Antibody
Clone	P1611
Conjugate	Unconjugated
Immunogen	Recombinant fragment corresponding to a region within amino acids 750 and 977 of Ribosome binding protein 1
Form	Liquid
Concentration	1.05 mg/mL
Purification	Protein G
Storage buffer	PBS
Contains	no preservative
Storage conditions	Store at 4°C short term. For long term storage, store at -20°C, avoiding freeze/thaw cycles.
RRID	AB_2539663

Applications	Tested Dilution	Publications
Western Blot (WB)	1:500-1:3,000	-
Immunocytochemistry (ICC/IF)	1:100-1:1,000	-

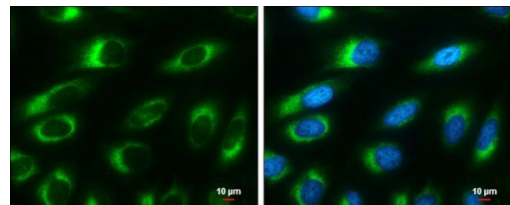
Product Specific Information

Recommended positive controls: HepG2.

Predicted reactivity: Mouse (81%), Dog (83%).

Store product as a concentrated solution. Centrifuge briefly prior to opening the vial.

Product Images For RRBP1 Monoclonal Antibody (P1611)

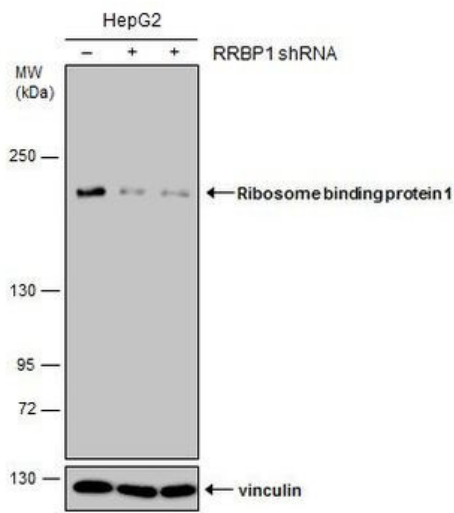


RRBP1 Antibody (MA5-18289) in ICC/IF

Immunocytochemistry-Immunofluorescence analysis of RRBP1 was performed in HeLa cells fixed in 4% paraformaldehyde at RT for 15 min. Green: RRBP1 Monoclonal Antibody (P1611) (Product # MA5-18289) diluted at 1:500. Blue: Hoechst 33342 staining. Scale bar = 10 μm.

RRBP1 Antibody (MA5-18289)

Antibody specificity was demonstrated by shRNA mediated knockdown of target protein. HepG2 cells were transfected with RRBP1 shRNA and decrease in signal intensity was observed in Western blotting using Anti-RRBP1 Monoclonal Antibody (P1611) (Product # MA5-18289). {KD}



For Research Use Only. Not for use in diagnostic procedures. Not for resale without express authorization. Products are warranted to operate or perform substantially in conformance with published Product specifications in effect at the time of sale, as set forth in the Production documentation, specifications and/or accompanying package inserts ("Documentation"). No claim of suitability for use in applications regulated by FDA is made. The warranty provided herein is valid only when used by properly trained individuals. Unless otherwise stated in the Documentation, this warranty is limited to one year from date of shipment when the Product is subjected to normal, proper and intended usage. This warranty does not extend to anyone other than the Buyer. Any model or sample furnished to Buyer is merely illustrative of the general type and quality of goods and does not represent that any Product will conform to such model or sample. NO OTHER WARRANTIES, EXPRESS OR IMPLIED, ARE GRANTED INCLUDING WITHOUT LIMITATION, IMPLIED WARRANTIES OF MERCHANTABILITY, FITNESS FOR ANY PARTICULAR PURPOSE, OR NON INFRINGEMENT. BUYER'S EXCLUSIVE REMEDY FOR NON-CONFORMING PRODUCTS DURING THE WARRANTY PERIOD IS LIMITED TO REPAIR, REPLACEMENT OF OR REFUND FOR THE NON-CONFORMING PRODUCT(S) AT SELLER'S SOLE OPTION. THERE IS NO OBLIGATION TO REPAIR, REPLACE OR REFUND FOR PRODUCTS AS THE RESULT OF (i) ACCIDENT, DISASTER OR EVENT OF FORCE MAJEURE, (ii) MISUSE, FAULT OR NEGLIGENCE OF OR BY BUYER, (iii) USE OF THE PRODUCTS IN A MANNER FOR WHICH THEY WERE NOT DESIGNED, OR (iv) IMPROPER STORAGE AND HANDLING OF THE PRODUCTS. Unless otherwise expressly stated on the Product or in the documentation accompanying the Product, the Product is intended for research only and is not to be used for any other purpose, including without limitation, unauthorized commercial uses, in vitro diagnostic uses, ex vivo or in vivo therapeutic uses, or any type of consumption by or application to human or animals.