

HP1 beta Monoclonal Antibody (4E12)

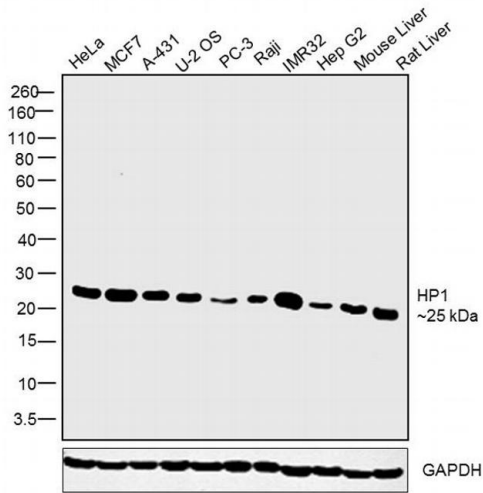
Product Details	
Size	100 µg
Species Reactivity	Human, Rat
Host/Isotype	Mouse / IgG2a, kappa
Class	Monoclonal
Type	Antibody
Clone	4E12
Conjugate	Unconjugated
Immunogen	CBX1 (NP_006798.1, 2 a.a. ~ 99 a.a) partial recombinant protein with GST tag. MW of the GST tag alone is 26 KDa.
Form	Liquid
Concentration	1 mg/mL
Purification	Affinity chromatography
Storage buffer	PBS, pH 7.4
Contains	no preservative
Storage conditions	-20° C, Avoid Freeze/Thaw Cycles
RRID	AB_2608236

Applications	Tested Dilution	Publications
Western Blot (WB)	1-5 µg/mL	-
Immunocytochemistry (ICC/IF)	5-10 µg/mL	-
ELISA (ELISA)	Assay-Dependent	-

Product Specific Information

Peptide Sequence: GKKQNKKKVE EVLEEEEEY VVEKVLDRRV VKGKVEYLLK WKGFSDEDNT WEPEENLDCP DLIAEFLQSQ KTAHETDKSE GGKRKADSDS EDKGEESK

Product Images For HP1 beta Monoclonal Antibody (4E12)

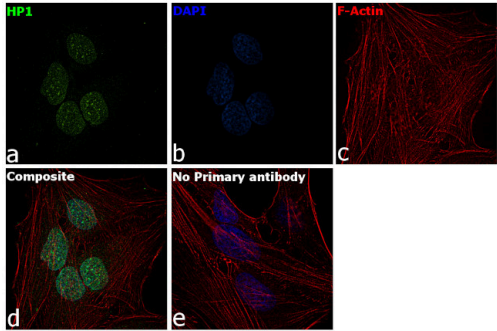


HP1 beta Antibody (MA5-21203) in WB

Western blot was performed using Anti-HP1 beta Monoclonal Antibody (Product # MA5-21203) and a 25kDa band corresponding to HP1 was observed across the cell lines and tissues tested. Modified whole cell extracts (30ug) of HeLa (Lane 1), MCF7 (Lane 2), A-431 (Lane 3), U-2 OS (Lane 4), PC-3 (Lane 5), Raji (Lane 6), IMR32 (Lane 7), Hep G2 (Lane 8), Mouse Liver (Lane 9) and Rat Liver (Lane 10) were electrophoresed using Novex® NuPAGE® 4-12 % Bis-Tris gel (Product # NP0322BOX). Resolved proteins were then transferred onto a nitrocellulose membrane (Product # IB23001) by iBlot® 2 Dry Blotting System (Product # IB21001). The blot was probed with the primary antibody (1ug/ml) and detected by chemiluminescence with Goat anti-Mouse IgG (H+L), Superclonal™ Recombinant Secondary Antibody, HRP (Product # A28177, 1:4000 dilution) using the iBright FL 1000 (Product # A32752). Chemiluminescent detection was performed using Novex® ECL Chemiluminescent Substrate Reagent Kit (Product # WP20005).

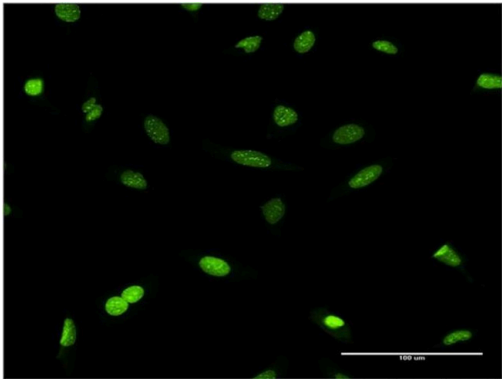
HP1 beta Antibody (MA5-21203) in ICC/IF

Immunofluorescence analysis of HP1 was performed using MCF7 cells. The cells were fixed with 4% paraformaldehyde for 10 minutes, permeabilized with 0.1% Triton™ X-100 for 15 minutes, and blocked with 2% BSA for 1 hour at room temperature. The cells were labeled with HP1 beta Monoclonal Antibody (Product # MA5-21203) at 5 µg/mL in 0.1% BSA and incubated overnight at 4 degree and then labeled with Goat anti-Rabbit IgG (Heavy Chain) Superclonal™ Recombinant Secondary Antibody, Alexa Fluor® 488 conjugate (Product # A27034) at a dilution of 1:2000 for 45 minutes at room temperature (Panel a: green). Nuclei (Panel b: blue) were stained with ProLong™ Diamond Antifade Mountant with DAPI (Product # P36962). F-actin (Panel c: red) was stained with Rhodamine Phalloidin (Product # R415, 1:300). Panel d represents the composite image showing nuclear localization of HP1. Panel e represents control cells with no primary antibody to assess background. The images were captured at 60X magnification.



HP1 beta Antibody (MA5-21203) in ICC/IF

Immunofluorescence analysis of HeLa cells using an anti-CBX1 monoclonal antibody (Product # MA5-21203). (antibody concentration 10 µg/mL).



View more figures on thermofisher.cn

For Research Use Only. Not for use in diagnostic procedures. Not for resale without express authorization. Products are warranted to operate or perform substantially in conformance with published Product specifications in effect at the time of sale, as set forth in the Production documentation, specifications and/or accompanying package inserts ("Documentation"). No claim of suitability for use in applications regulated by FDA is made. The warranty provided herein is valid only when used by properly trained individuals. Unless otherwise stated in the Documentation, this warranty is limited to one year from date of shipment when the Product is subjected to normal, proper and intended usage. This warranty does not extend to anyone other than the Buyer. Any model or sample furnished to Buyer is merely illustrative of the general type and quality of goods and does not represent that any Product will conform to such model or sample. NO OTHER WARRANTIES, EXPRESS OR IMPLIED, ARE GRANTED INCLUDING WITHOUT LIMITATION, IMPLIED WARRANTIES OF MERCHANTABILITY, FITNESS FOR ANY PARTICULAR PURPOSE, OR NON INFRINGEMENT. BUYER'S EXCLUSIVE REMEDY FOR NON-CONFORMING PRODUCTS DURING THE WARRANTY PERIOD IS LIMITED TO REPAIR, REPLACEMENT OF OR REFUND FOR THE NON-CONFORMING PRODUCT(S) AT SELLER'S SOLE OPTION. THERE IS NO OBLIGATION TO REPAIR, REPLACE OR REFUND FOR PRODUCTS AS THE RESULT OF (i) ACCIDENT, DISASTER OR EVENT OF FORCE MAJEURE, (ii) MISUSE, FAULT OR NEGLIGENCE OF OR BY BUYER, (iii) USE OF THE PRODUCTS IN A MANNER FOR WHICH THEY WERE NOT DESIGNED, OR (iv) IMPROPER STORAGE AND HANDLING OF THE PRODUCTS. Unless otherwise expressly stated on the Product or in the documentation accompanying the Product, the Product is intended for research only and is not to be used for any other purpose, including without limitation, unauthorized commercial uses, in vitro diagnostic uses, ex vivo or in vivo therapeutic uses, or any type of consumption by or application to human or animals.