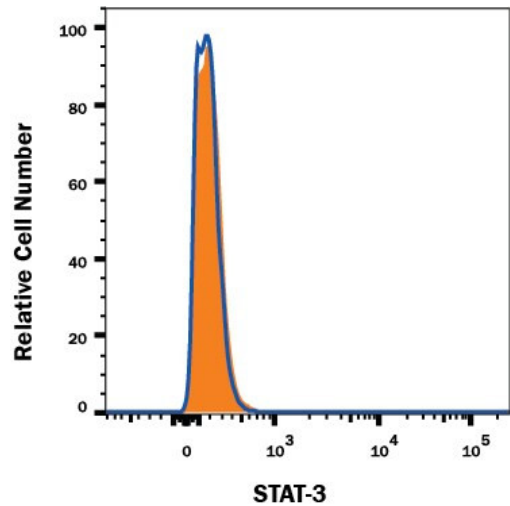


STAT3 Monoclonal Antibody (232209), PE

Product Details	
Size	100 Tests
Species Reactivity	Human, Mouse, Rat
Host/Isotype	Mouse / IgG2b
Class	Monoclonal
Type	Antibody
Clone	232209
Conjugate	PE
Excitation/Emission Max	565/576 nm
Immunogen	E. coli-derived recombinant human STAT3 Met1-Asn175
Form	Liquid
Purification	Protein A/G
Storage buffer	Buffered saline solution with 0.5% BSA
Contains	0.09% sodium azide
Storage conditions	4° C, store in dark, DO NOT FREEZE!
RRID	AB_2608841

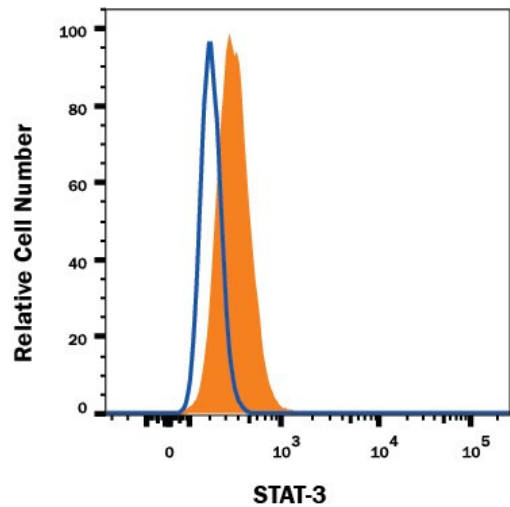
Applications	Tested Dilution	Publications
Flow Cytometry (Flow)	10 µL per million cells	-

Product Images For STAT3 Monoclonal Antibody (232209), PE



STAT3 Antibody (MA5-23569) in Flow

Knockdown validation by Flow cytometry of STAT3 in STAT3 knockout HeLa human cervical epithelial cell line. Samples were incubated in STAT3 monoclonal antibody (Product # MA5-23569). Cell line was stained with monoclonal antibody or isotype control antibody. No staining in the STAT3 knockout HeLa cell line was observed. To facilitate intracellular staining, cells were fixed with Flow Cytometry Fixation Buffer and permeabilized with Flow Cytometry Permeabilization/Wash Buffer.



STAT3 Antibody (MA5-23569) in Flow

Flow cytometry of STAT3 in HeLa human cell line. Samples were incubated in STAT3 monoclonal antibody (Product # MA5-23569) or isotype control antibody. To facilitate intracellular staining, cells were fixed with Flow Cytometry Fixation Buffer and permeabilized with Flow Cytometry Permeabilization/Wash Buffer.

For Research Use Only. Not for use in diagnostic procedures. Not for resale without express authorization. Products are warranted to operate or perform substantially in conformance with published Product specifications in effect at the time of sale, as set forth in the Production documentation, specifications and/or accompanying package inserts ("Documentation"). No claim of suitability for use in applications regulated by FDA is made. The warranty provided herein is valid only when used by properly trained individuals. Unless otherwise stated in the Documentation, this warranty is limited to one year from date of shipment when the Product is subjected to normal, proper and intended usage. This warranty does not extend to anyone other than the Buyer. Any model or sample furnished to Buyer is merely illustrative of the general type and quality of goods and does not represent that any Product will conform to such model or sample. NO OTHER WARRANTIES, EXPRESS OR IMPLIED, ARE GRANTED INCLUDING WITHOUT LIMITATION, IMPLIED WARRANTIES OF MERCHANTABILITY, FITNESS FOR ANY PARTICULAR PURPOSE, OR NON-INFRINGEMENT. BUYER'S EXCLUSIVE REMEDY FOR NON-CONFORMING PRODUCTS DURING THE WARRANTY PERIOD IS LIMITED TO REPAIR, REPLACEMENT OF OR REFUND FOR THE NON-CONFORMING PRODUCT(S) AT SELLER'S SOLE OPTION. THERE IS NO OBLIGATION TO REPAIR, REPLACE OR REFUND FOR PRODUCTS AS THE RESULT OF (i) ACCIDENT, DISASTER OR EVENT OF FORCE MAJEURE, (ii) MISUSE, FAULT OR NEGLIGENCE OF OR BY BUYER, (iii) USE OF THE PRODUCTS IN A MANNER FOR WHICH THEY WERE NOT DESIGNED, OR (iv) IMPROPER STORAGE AND HANDLING OF THE PRODUCTS. Unless otherwise expressly stated on the Product or in the documentation accompanying the Product, the Product is intended for research only and is not to be used for any other purpose, including without limitation, unauthorized commercial uses, in vitro diagnostic uses, ex vivo or in vivo therapeutic uses, or any type of consumption by or application to human or animals.