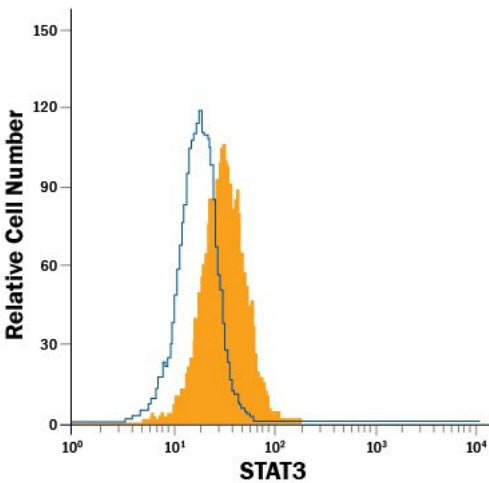


STAT3 Monoclonal Antibody (232209), FITC

Product Details	
Size	100 Tests
Species Reactivity	Human, Mouse, Rat
Published Species	Mouse
Host/Isotype	Mouse / IgG2b
Class	Monoclonal
Type	Antibody
Clone	232209
Conjugate	FITC
Excitation/Emission Max	498/517 nm
Immunogen	E. coli-derived recombinant human STAT3 Met1-Asn175
Form	Liquid
Purification	Protein A/G
Storage buffer	Buffered saline solution with 0.5% BSA
Contains	0.09% sodium azide
Storage conditions	4° C, store in dark, DO NOT FREEZE!
RRID	AB_2608842

Applications	Tested Dilution	Publications
Flow Cytometry (Flow)	10 µL per million cells	1 Publication

Product Images For STAT3 Monoclonal Antibody (232209), FITC



STAT3 Antibody (MA5-23635) in Flow
Flow cytometry of STAT3 in Jurkat human acute T cell leukemia cell line. Samples were incubated in STAT3 monoclonal antibody (Product # MA5-23635) or isotype control antibody.

Flow Cytometry (1)

<p>The Journal of experimental medicine</p> <p>The colonic macrophage transcription factor RBP-J orchestrates intestinal immunity against bacterial pathogens.</p> <p>"MA5-23635 was used in Flow Cytometry to demonstrate that colonic macrophage-intrinsic RBP-J dynamically orchestrates intestinal immunity against pathogen infections by interfacing with key immune cells of T and innate lymphoid cell lineages."</p> <p>Authors: Kang L,Zhang X, Ji L, Kou T, Smith SM, Zhao B, Guo X, Pineda-Torra I, Wu L, Hu X</p>	<p>Year 2020</p> <p>Species Mouse</p>
---	---

For Research Use Only. Not for use in diagnostic procedures. Not for resale without express authorization. Products are warranted to operate or perform substantially in conformance with published Product specifications in effect at the time of sale, as set forth in the Production documentation, specifications and/or accompanying package inserts ("Documentation"). No claim of suitability for use in applications regulated by FDA is made. The warranty provided herein is valid only when used by properly trained individuals. Unless otherwise stated in the Documentation, this warranty is limited to one year from date of shipment when the Product is subjected to normal, proper and intended usage. This warranty does not extend to anyone other than the Buyer. Any model or sample furnished to Buyer is merely illustrative of the general type and quality of goods and does not represent that any Product will conform to such model or sample. NO OTHER WARRANTIES, EXPRESS OR IMPLIED, ARE GRANTED INCLUDING WITHOUT LIMITATION, IMPLIED WARRANTIES OF MERCHANTABILITY, FITNESS FOR ANY PARTICULAR PURPOSE, OR NON INFRINGEMENT. BUYER'S EXCLUSIVE REMEDY FOR NON-CONFORMING PRODUCTS DURING THE WARRANTY PERIOD IS LIMITED TO REPAIR, REPLACEMENT OF OR REFUND FOR THE NON-CONFORMING PRODUCT(S) AT SELLER'S SOLE OPTION. THERE IS NO OBLIGATION TO REPAIR, REPLACE OR REFUND FOR PRODUCTS AS THE RESULT OF (i) ACCIDENT, DISASTER OR EVENT OF FORCE MAJEURE, (ii) MISUSE, FAULT OR NEGLIGENCE OF OR BY BUYER, (iii) USE OF THE PRODUCTS IN A MANNER FOR WHICH THEY WERE NOT DESIGNED, OR (iv) IMPROPER STORAGE AND HANDLING OF THE PRODUCTS. Unless otherwise expressly stated on the Product or in the documentation accompanying the Product, the Product is intended for research only and is not to be used for any other purpose, including without limitation, unauthorized commercial uses, in vitro diagnostic uses, ex vivo or in vivo therapeutic uses, or any type of consumption by or application to human or animals.