

ADAM8 Monoclonal Antibody (143303)

Product Details

Size	100 µg
Species Reactivity	Human
Host/Isotype	Mouse / IgG2B
Class	Monoclonal
Type	Antibody
Clone	143303
Conjugate	Unconjugated
Immunogen	Mouse myeloma cell line NS0-derived recombinant human ADAM8 ectodomain Asp158-Ser653
Form	Lyophilized
Concentration	0.5 mg/mL
Purification	Protein A/G
Storage buffer	PBS with 5% trehalose
Contains	No Preservative
Storage conditions	-20° C, Avoid Freeze/Thaw Cycles
RRID	AB_2608284

Applications

Tested Dilution

Publications

Western Blot (WB)	1 µg/mL	-
Immunoprecipitation (IP)	25 µg/mL	-

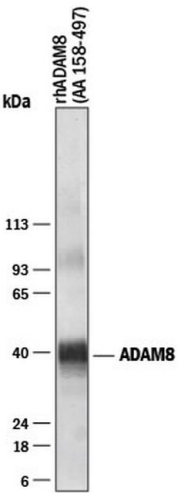
Product Specific Information

In Western blots, less than 5% cross-reactivity with the ectodomains of recombinant human ADAM9, 10, 15, 17, and 19 is observed. This antibody detects an epitope within aa 201-497 of recombinant human ADAM8 which corresponds to the metalloprotease and disintegrin-like domains.

Reconstitute at 0.5 mg/mL in sterile PBS.

Endotoxin level is <0.10 EU per 1 µg of the antibody by the LAL method.

Product Images For ADAM8 Monoclonal Antibody (143303)



ADAM8 Antibody (MA5-23870) in WB

Western blot analysis of ADAM8 in recombinant human ADAM8 aa 158-497 . Samples were incubated in ADAM8 monoclonal antibody (Product # MA5-23870) using a dilution of 1 µg/mL followed by a HRP-conjugated Anti-Mouse IgG secondary antibody. A specific band was detected for ADAM8 aa158-497 at approximately 40 kDa (as indicated). This experiment was conducted under reducing conditions.

For Research Use Only. Not for use in diagnostic procedures. Not for resale without express authorization. Products are warranted to operate or perform substantially in conformance with published Product specifications in effect at the time of sale, as set forth in the Production documentation, specifications and/or accompanying package inserts ("Documentation"). No claim of suitability for use in applications regulated by FDA is made. The warranty provided herein is valid only when used by properly trained individuals. Unless otherwise stated in the Documentation, this warranty is limited to one year from date of shipment when the Product is subjected to normal, proper and intended usage. This warranty does not extend to anyone other than the Buyer. Any model or sample furnished to Buyer is merely illustrative of the general type and quality of goods and does not represent that any Product will conform to such model or sample. NO OTHER WARRANTIES, EXPRESS OR IMPLIED, ARE GRANTED INCLUDING WITHOUT LIMITATION, IMPLIED WARRANTIES OF MERCHANTABILITY, FITNESS FOR ANY PARTICULAR PURPOSE, OR NON-INFRINGEMENT. BUYER'S EXCLUSIVE REMEDY FOR NON-CONFORMING PRODUCTS DURING THE WARRANTY PERIOD IS LIMITED TO REPAIR, REPLACEMENT OF OR REFUND FOR THE NON-CONFORMING PRODUCT(S) AT SELLER'S SOLE OPTION. THERE IS NO OBLIGATION TO REPAIR, REPLACE OR REFUND FOR PRODUCTS AS THE RESULT OF (i) ACCIDENT, DISASTER OR EVENT OF FORCE MAJEURE, (ii) MISUSE, FAULT OR NEGLIGENCE OF OR BY BUYER, (iii) USE OF THE PRODUCTS IN A MANNER FOR WHICH THEY WERE NOT DESIGNED, OR (iv) IMPROPER STORAGE AND HANDLING OF THE PRODUCTS. Unless otherwise expressly stated on the Product or in the documentation accompanying the Product, the Product is intended for research only and is not to be used for any other purpose, including without limitation, unauthorized commercial uses, in vitro diagnostic uses, ex vivo or in vivo therapeutic uses, or any type of consumption by or application to human or animals.