

SLC22A2 Monoclonal Antibody (640438)

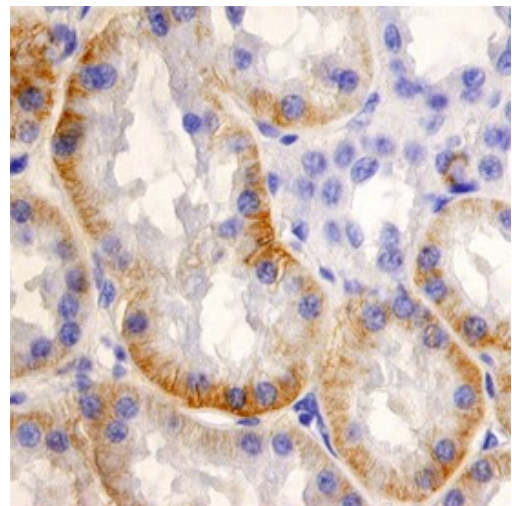
Product Details	
Size	100 µg
Species Reactivity	Human
Host/Isotype	Mouse / IgG2a
Class	Monoclonal
Type	Antibody
Clone	640438
Conjugate	Unconjugated
Immunogen	NS0 mouse myeloma cell line transfected with human SLC-22A2
Form	Lyophilized
Concentration	0.5 mg/mL
Purification	Protein A/G
Storage buffer	PBS with 5% trehalose
Contains	No Preservative
Storage conditions	-20° C, Avoid Freeze/Thaw Cycles
RRID	AB_2610368

Applications	Tested Dilution	Publications
Immunohistochemistry (Paraffin) (IHC (P))	8-25 µg/mL	-
Flow Cytometry (Flow)	0.25 µg/10^6 cells	-

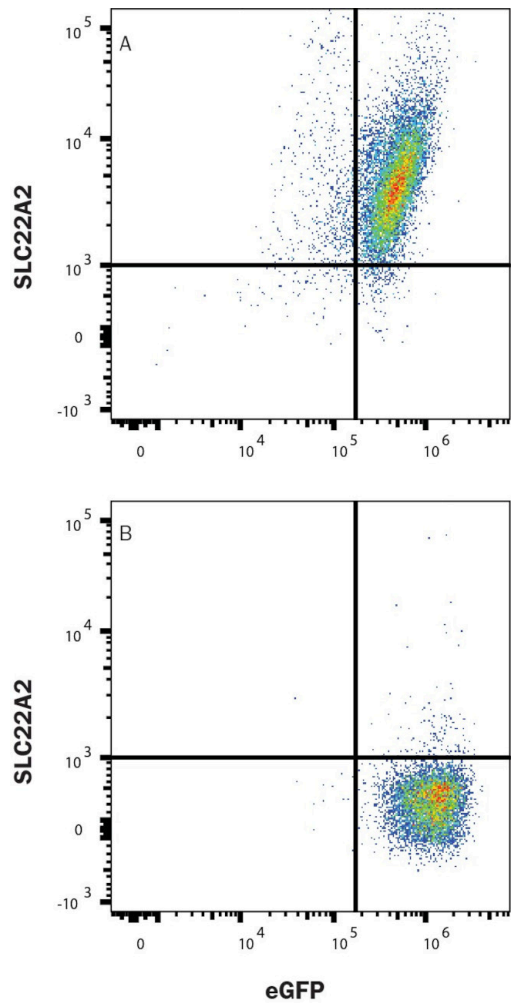
Product Specific Information

Reconstitute in sterile PBS to a final concentration of 0.5 mg/mL.

Product Images For SLC22A2 Monoclonal Antibody (640438)



SLC22A2 Antibody (MA5-24289) in IHC (P)
Immunohistochemical analysis of SLC22A2 in immersion fixed paraffin-embedded sections of human kidney. Samples were incubated in SLC22A2 monoclonal antibody (Product # MA5-24289) using a dilution of 25 µg/mL overnight at 4 °C. Tissue was stained using the Anti-Mouse HRP-DAB Cell & Tissue Staining Kit (brown) and counterstained with hematoxylin (blue). Specific staining was localized to the cytoplasm of epithelial cells in convoluted tubules.



SLC22A2 Antibody (MA5-24289) in Flow
Flow cytometry of SLC22A2 in HEK293 human embryonic kidney cell line transfected with EGP and (A) human SLC22A2/OCT2 or (B) irrelevant protein. Samples were incubated in SLC22A2 monoclonal antibody (Product # MA5-24289) followed by Allophycocyanin-conjugated Anti-Mouse IgG Secondary Antibody. Quadrant markers were set based on Mouse IgG2A Isotype Control.

For Research Use Only. Not for use in diagnostic procedures. Not for resale without express authorization. Products are warranted to operate or perform substantially in conformance with published Product specifications in effect at the time of sale, as set forth in the Production documentation, specifications and/or accompanying package inserts ("Documentation"). No claim of suitability for use in applications regulated by FDA is made. The warranty provided herein is valid only when used by properly trained individuals. Unless otherwise stated in the Documentation, this warranty is limited to one year from date of shipment when the Product is subjected to normal, proper and intended usage. This warranty does not extend to anyone other than the Buyer. Any model or sample furnished to Buyer is merely illustrative of the general type and quality of goods and does not represent that any Product will conform to such model or sample. NO OTHER WARRANTIES, EXPRESS OR IMPLIED, ARE GRANTED INCLUDING WITHOUT LIMITATION, IMPLIED WARRANTIES OF MERCHANTABILITY, FITNESS FOR ANY PARTICULAR PURPOSE, OR NON-INFRINGEMENT. BUYER'S EXCLUSIVE REMEDY FOR NON-CONFORMING PRODUCTS DURING THE WARRANTY PERIOD IS LIMITED TO REPAIR, REPLACEMENT OF OR REFUND FOR THE NON-CONFORMING PRODUCT(S) AT SELLER'S SOLE OPTION. THERE IS NO OBLIGATION TO REPAIR, REPLACE OR REFUND FOR PRODUCTS AS THE RESULT OF (I) ACCIDENT, DISASTER OR EVENT OF FORCE MAJEURE, (II) MISUSE, FAULT OR NEGLIGENCE OF OR BY BUYER, (III) USE OF THE PRODUCTS IN A MANNER FOR WHICH THEY WERE NOT DESIGNED, OR (IV) IMPROPER STORAGE AND HANDLING OF THE PRODUCTS. Unless otherwise expressly stated on the Product or in the documentation accompanying the Product, the Product is intended for research only and is not to be used for any other purpose, including without limitation, unauthorized commercial uses, in vitro diagnostic uses, ex vivo or in vivo therapeutic uses, or any type of consumption by or application to human or animals.